

CERTIFIED LAND CORNER RESTORATION

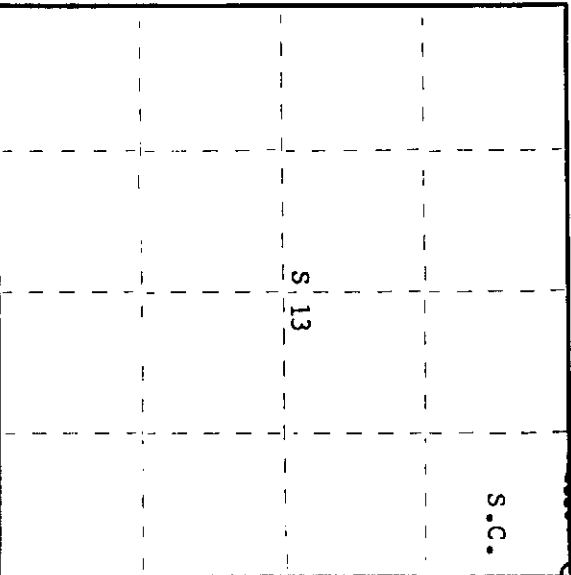
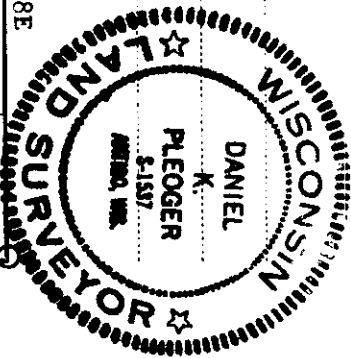
Index No. J-25

State of Wisconsin

County of Oneida } ss.

I, Daniel K. Pleoeger, do hereby certify that on the 14th day of July, 1980, I found evidence of the Section corner of Sections 7, 12, 13, 18 Township 39, North, Range 8 & 9 East, Fourth Principal Meridian, as described hereon; and that from this evidence I established a new monument and accessories as described hereon to perpetuate the original location of this corner.

Resident witnesses:



○ = Corner monument restored.

History of original corner establishment:

Corner established by Alexander Anderson, deputy surveyor, in 1863 from which Y. Pine 8" bears S88°W, 19 links - Y. Pine 8" bears N23°W, 19 links - aspen 12" bears N26°E 19 links and Y. Pine 10" bears S43°E 25 links.

Description of corner evidence found:

Recovered an old cedar post squared and scribed 7, 12, 13, 18 - also a 2" x 24" iron pipe along side post.
 OBT's - pine stump 14" S14°E 44.70 links, some scribe marks legible.
 r.pine 8" (12") S80°W 82.6 links, scribing grown over.
 OBT ties fit old post.

Description of monument and accessories: I established to perpetuate the original location of this corner.

Set a 2-1/2" Oneida County federal A-1 monument with alloy cap - stamped:

Monument projects 8" above ground.
 Marked NBT's -
 Maple 8" S19°W 9.34 feet R T39N R
 Maple 6" N54°E 7.35 feet 8 12 7 9
 Maple 6" N57°W 28.55 feet E S1537-1980
 scribed S.C. - BT

Dated at Rhineland, Wis., this 16th day of October, 1980.

Signature Daniel K. Pleoeger Title Registered Land Surveyor Registration No. 1537
 (County Surveyor, Registered Land Surveyor, or other duly authorized official)

Office of Register of Deeds, County of Oneida,
 Instrument was filed in this office for record on the 20th day of October, 1980
 at 10:00 o'clock M.

Donna Savage Kuehn
 (Register of Deeds)

By: _____ Deputy

3908120000

U.S. PUBLIC LAND SURVEY MONUMENT RECORD

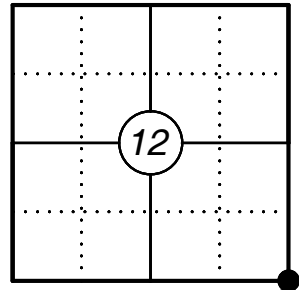
This form is intended and designed to fulfill all requirements of Wisconsin Administrative Code, Chapter A-E 7.08 U.S. Public Land Survey Monument Record (3) (a)(b)(c)(d)(e)(f)(g)(h)(i). An additional sheet may be added if necessary to confirm with said requirements.

Oneida County
Land Information Office
Filed
2/25/2025

(a) Corner Location:

SE Corner Section 12
Township 39 North
Range 8 East
Town of Newbold
County of Oneida

Corner ID: 3908120000



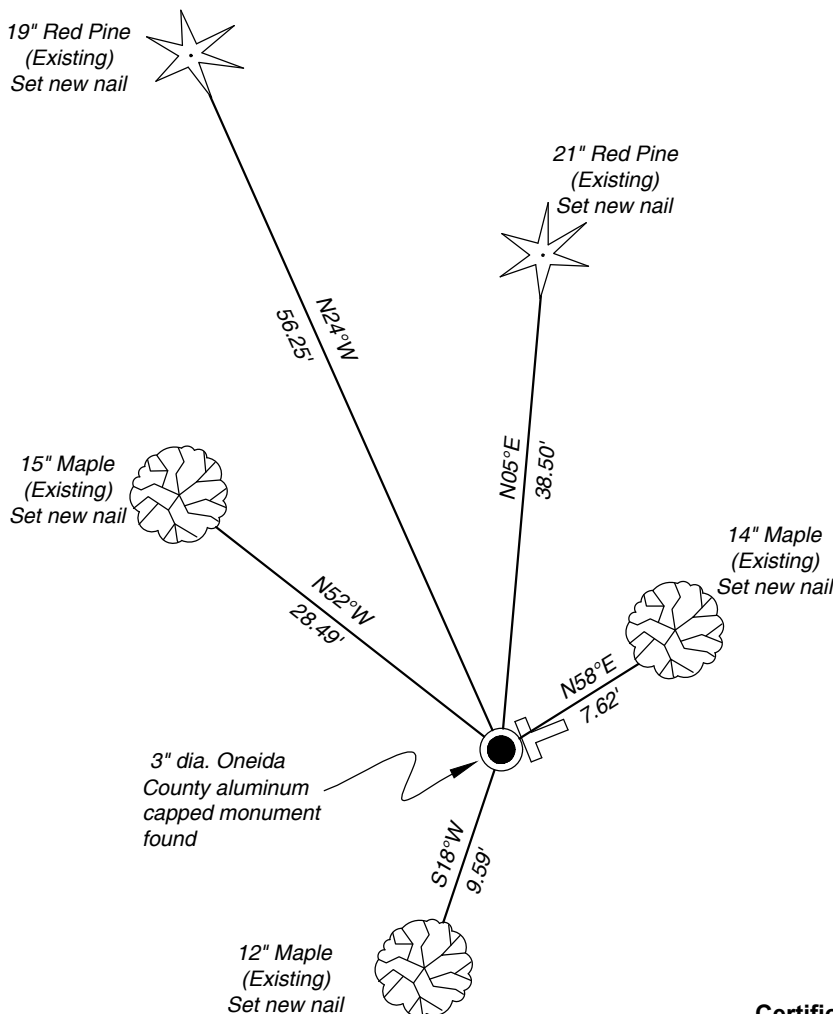
(b) History of Original Corner:

For corner history, see previous Certified Land Corner Restoration Record by Daniel K. Pleoger dated October 16, 1980.

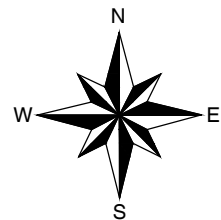
(f)(g)(h) Description of monument found at this corner and if it was accepted, state all evidence (material, testimonial, occupational, plats, records, other monuments) used as a basis for establishing location. If reestablishing through lost corner proportionate methods, indicate all monuments, distances, and directions used to establish. Indicate type of monument and sign post found or set.

03/17/2020 - I found a 3" dia. Oneida County aluminum capped monument at the corner location and five existing bearing trees and found a 2 1/2" iron pipe S52°E 0.63 from the monument, and a old wood post lying next to the monument. I also found an old 16" snag S12°E 29.7' which may be the OBT noted by Pleoger. I set new nails in the existing bearing trees to witness the corner as shown below.

(c)(d)(e) Plan view of corner with ties to at least four witnesses. If in disagreement with previously established corner, show the distances between the two corners and also indicate the tie to the disputed corner.



Magnetic Bearings
Not to scale



- * Guard post 1.0' northeast of corner
- * Distances to bearing trees are to nail in side.



Certification

I, Gregory S. Maines, Professional Land Surveyor No. 2729, hereby certify that the corner location on this record was referenced by me or under my direction and control and that this U.S. Public Land Survey Monument Record is complete to the best of my knowledge and belief. REF: 2020055

Index No.: