

At _____ O'Clock _____ M
THOMAS H LEIGHTON

This form is intended to fulfill the requirements of Chapter A-E7.08 REGISTER OF DEEDS Public Land Survey Monument Location Record, Wisconsin Administrative Code. Use the reverse side of form for continuation.

U.S. PUBLIC LAND SURVEY MONUMENT LOCATION RECORD

Recorders Data

USPLS CORNER: NORTH WITNESS MC SECTION: 18 TOWNSHIP: 39 NORTH RANGE: 9 EAST

NAME OF WATERWAY FOR M.C. CORNER : PARADISE LAKE SECTION LINE: WEST

(CITY)(VILLAGE)(TOWN) OF: SUGAR CAMP COUNTY OF: ONEIDA

Description of monument found or placed and all other evidence used as the basis for monument location; including monuments and measurements required if the corner location was reestablished by lost corner proportionate methods. Also indicate name of the original surveyor, original survey date and the corner monument, bearing trees, witness or other reference monuments established, including measured bearing and distance ties, from available survey records.

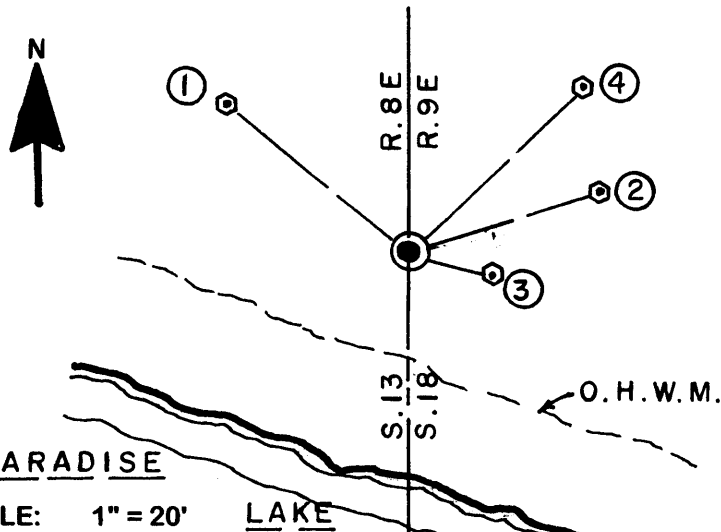
In June 1865, Alexander Anderson/GLO set a wood post as MC and noted OBTs: a 10" Pw N57°E 23 links and a 12" Pw N10°W 25 links; all now obliterated.

In 1955, Sy M. Poskie/RLS 140 notes an iron pipe at this Witness MC per legend on his Plat of Survey A-508 filed in Oneida County survey records.

In October 1983, James Will/RLS 1410 notes a 2" dia. iron pipe at this Witness MC per legend on his Plat of Survey B-1635 filed in Oneida County survey records; and also on his 1987 Plat of Survey filed as B-4298 and on his 2001 Plats of Survey B-4890 and B-5295. In August 1996, Stephen J. Favorite/RLS 1616 notes a 2" dia. iron pipe at this Witness MC per legend on his Plat of Survey A-786 filed in Oneida County survey records.

On June 27, 2006 I found an old 1.75" O.D. iron pipe with plugged top 39" above grade at this Witness MC location per above record surveys; I pulled the 46" long old iron pipe and drove a standard 2" dia. x 16" long aluminum monument with stamped Oneida County cap to 2" above grade into the soil cavity of old iron pipe. Corner falls 24' +/- North of lake shore bearing S70°E this date. OHWM shoreline vegetation is about 11' South of the corner. Corner is also at the SE corner of improved lakeshore lot owned by Bruce Berg, at Fire No. 8320 Silver Shore Drive, who witnessed this recovery.

Plan view map of monument location with bearing and distance ties to a minimum of four(4) described witness or reference monuments of concrete, natural stone, iron, live bearing trees or equivalent material. If applicable, also show a minimum of two(2) bearing and distance ties to any other monument found and not accepted; including the bearing and distance from the accepted monument.



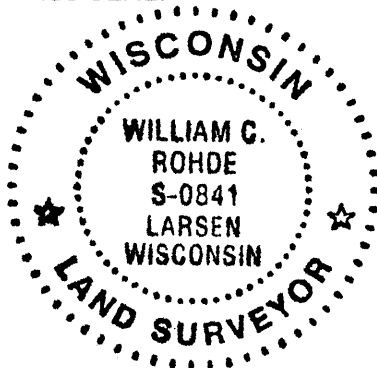
WITNESS MONUMENT TIES:

- ① New 7.5" Pr BT N51°W 24.70'.
- ② New 8" Pw BT N72°E 20.47'.
- ③ New 12" Pw BT S76°E 8.74'.
- ④ New 4.5" Pw BT N46°E 24.80'.

Standard white poly 'T' marker post set 10.8' South of new corner monument.

Unless otherwise indicated, all bearing tree ties are to a .25" dia. by 2.5" long PK nail with a 1.25" dia. steel washer driven into unblazed right face and a .25" dia. by 2.5" long PK nail with a 2" dia. steel washer stamped BT is also driven into unblazed face of bearing tree at DBH; the basis for measured bearings is by compass to nearest degree and all tie distances are measured horizontal by steel tape corrected to nearest 1/100th feet at standard temperature of 68° F.

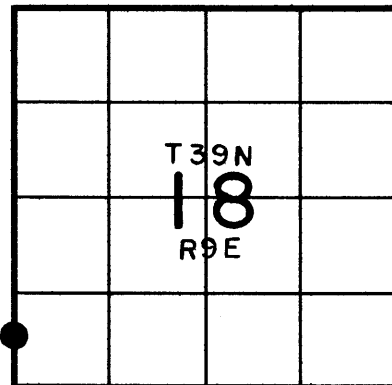
RLS SEAL:



LAND SURVEYOR CERTIFICATE:

I, William C. Rohde, hereby certify that I am duly licensed as a Professional Land Surveyor in the State of Wisconsin; that this USPLS monument location was determined by me and/or under my direct supervision and control; and that this U.S. Public Land Survey Monument Location Record is true and correct to the best of my knowledge and belief.

Signed William C. Rohde
William C. Rohde RLS 841

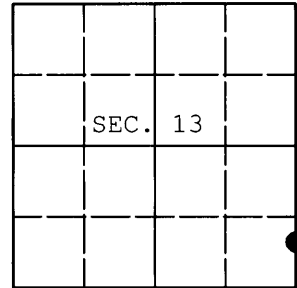


SECTION LOCATION MAP
INDEX NO. M-N 1
3908130600

U.S. PUBLIC LAND SURVEY MONUMENT RECORD

Note: This form is intended and designed to fulfill all requirements of Wisconsin Administrative Code, Chapter A-E 7.08 U.S. Public Land Survey Monument Record (3) (a) (b) (c) (d) (e) (f) (g) (h) (i). An additional sheet may be added if necessary to conform with said requirements.

(a) CORNER LOCATION: WISCRS (Oneida County)
Meander Cor. of Secs. 13 & 18 N: 246,767.62 USft
Township 39 North E: 260,100.17 USft
Range 8 & 9 East of the 4th P.M. Datum: NAD 1983(2011)
Town of Newbold & Sugar Camp County of Oneida



(b) HISTORY OF ORIGINAL CORNER ESTABLISHMENT

Original Surveyor: Original Accessories:
Date of Survey: Commenced:
Completed:

(b)(f)(g)(h) Description of monument found at this corner and if it was accepted, state all evidence (material, testimonial, occupational, plats, records, other monuments) used as a basis for accepting. If not accepted or if nothing was found, state evidence used as basis for establishing location. If re-established through lost corner proportionate methods, indicate all monuments, distances and directions used to establish. Indicate type of monument and sign post found or set.

NOTE: This is a perpetuation of a previous USPLS Monument Record by William C. Rohde, RLS dated November 20, 2006 and filed in the office of the Oneida County Register of Deeds. A complete history of the corner can be found on the previous monument record. I accept the previous location as a true and faithful perpetuation or reestablishment of the original corner location and further perpetuate it as follows.

May 28, 2014: I found and accepted Rohde's monument, a 2.5" diam. Oneida County aluminum monument. Rohde's accessories were found in substantial agreement with his previous record and were not remeasured as the sole purpose of this work is to report the coordinates of the corner point.

The coordinates shown were derived from offset RTN GPS observations referenced to the WISCRS network.

(c)(d)(e) Plan view of corner with ties to at least 4 witness monuments. If in disagreement with previously established corner, show the distances between the two corners and also indicate the ties to the disputed.

REGISTER OF DEEDS OFFICE
ONEIDA COUNTY
FILED

JUL 03 2014

AT O'CLOCK M
KYLE J. FRANSON
REGISTER OF DEEDS

(i) I, Jeffrey W. Austin, Registered Land Surveyor No. S-1885, hereby certify that the corner location on this record was determined by me or under my direction and control and that this U.S. Public Land Survey Monument Record is correct and complete to the best of my knowledge and belief.



Handwritten signature of Jeffrey W. Austin.

JUNE 28, 2014
Date