

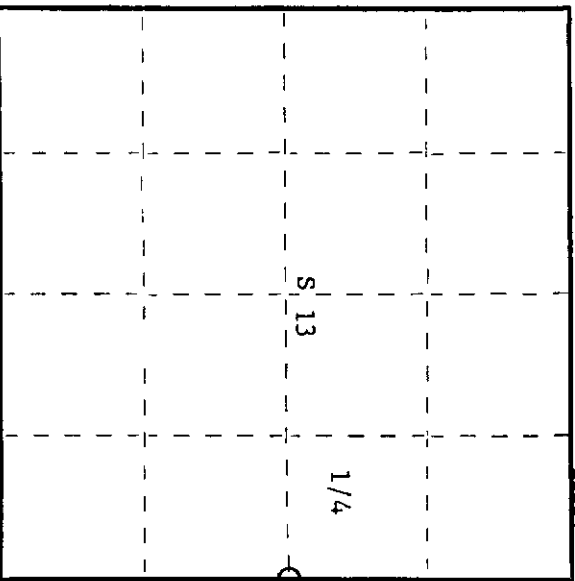
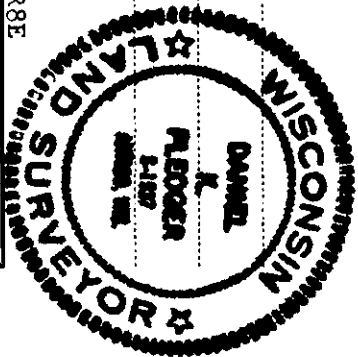
CERTIFIED LAND CORNER RESTORATION

Index No. L-25

State of Wisconsin }
 County of Oneida } ss.

I Daniel K. Pleogger, do hereby certify that on the 14th day of July, 1980, I found evidence of the Quarter corner of Sections 13 and 18 Township 39, North, Range 8 and 9 East, Fourth Principal Meridian, as described hereon; and that from this evidence I established a new monument and accessories as described hereon to perpetuate the original location of this corner.

Resident witnesses:



○ = Corner monument restored.

History of original corner establishment:

Corner established by Alexander Anderson, deputy surveyor, in 1863 from which birch 10" bears N 72° E, 14 links and birch 10" bears N 60° W, 22 links.

Description of corner evidence found:

- Recovered a 2" iron pipe set on the east side of C.T.H. "O" flush with the blacktop.
- O.B.T.'s -
- R. Pine 8" N58°E 29.9 feet - now a cut-off stump.
- R. Pine 22" (26") S40°E 46.2 feet - scribing grown over.
- O.B.T.'s by W.V.J.C.

Description of monument and accessories I established to perpetuate the original location of this corner.

Set a 2-1/2" Oneida County federal A-1 monument with alloy cap 25 feet east for witness corner - stamped:
 Monument projects 8" above ground.
 Marked B.O.'s to true corner:
 power pole #39-0918W33 N50°E 18.85 feet R T39N R
 power pole #39-0918L1 S4°E 94.38 feet E 8 1/4 13 18 9 W.C.
 25 ft. West
 S1537-1980

Dated at Rhineland, Wis., this 8th day of October, 1980.

Signature: Daniel K. Pleogger Title: Registered Land Surveyor Registration No. 1537
 (County Surveyor, Registered Land Surveyor, or other duly authorized official)

Office of Register of Deeds, County of Oneida, I hereby certify that the within instrument was filed in this office for record on the 20th day of October, 1980 at 1:00 o'clock P. M.

Devin Leverage Fuchs
 (Register of Deeds)

By: _____ Deputy

3908132000

U.S. PUBLIC LAND SURVEY MONUMENT RECORD

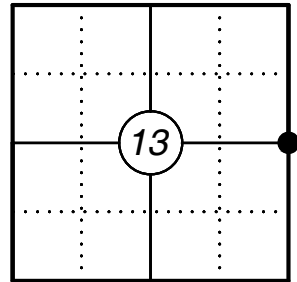
This form is intended and designed to fulfill all requirements of Wisconsin Administrative Code, Chapter A-E 7.08 U.S. Public Land Survey Monument Record (3) (a)(b)(c)(d)(e)(f)(g)(h)(i). An additional sheet may be added if necessary to confirm with said requirements.

Oneida County
Land Information Office
Filed
3/26/2025

(a) Corner Location:

E 1/4 Corner Section 13
Township 39 North
Range 8 East
Town of Newbold
County of Oneida

Corner ID: 3908132000



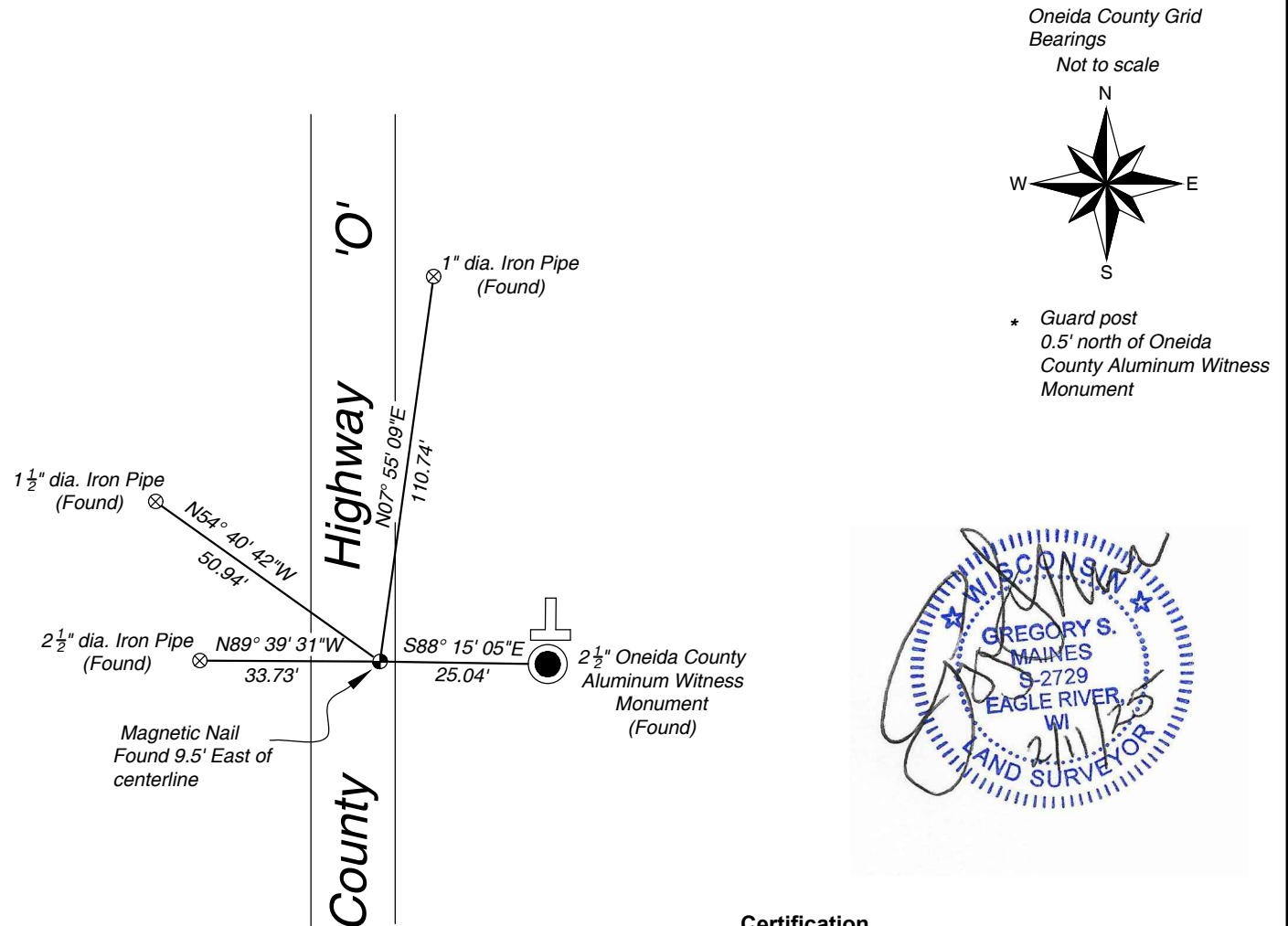
(b) History of Original Corner:

For corner history, see previous Certified Land Corner Restoration Record by Daniel K. Pleoeger dated October 8, 1980.

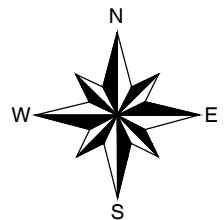
(f)(g)(h) Description of monument found at this corner and if it was accepted, state all evidence (material, testimonial, occupational, plats, records, other monuments) used as a basis for establishing location. If reestablishing through lost corner proportionate methods, indicate all monuments, distances, and directions used to establish. Indicate type of monument and sign post found or set.

2/7/2025 - I found a magnetic nail marker at the corner location and the Oneida County aluminum witness monument. The magnetic nail checks well with the published Oneida County Coordinates. I measured to the witness monument and three existing iron pipes to witness the corner as shown below.

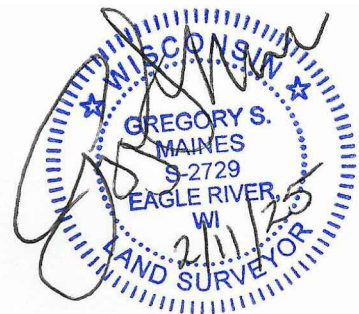
(c)(d)(e) Plan view of corner with ties to at least four witnesses. If in disagreement with previously established corner, show the distances between the two corners and also indicate the tie to the disputed corner.



Oneida County Grid Bearings
Not to scale



* Guard post
0.5' north of Oneida
County Aluminum Witness
Monument



Certification

I, Gregory S. Maines, Professional Land Surveyor No. 2729, hereby certify that the corner location on this record was referenced by me or under my direction and control and that this U.S. Public Land Survey Monument Record is complete to the best of my knowledge and belief. REF: 2020055

Index No.: