

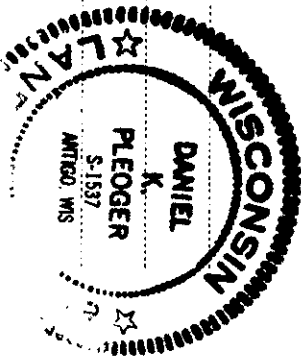
CERTIFIED LAND CORNER RESTORATION

Index No. N-21

State of Wisconsin }  
County of Oneida } ss.

I Daniel K. Pleoeger, do hereby certify that on the 16th day of July, 1980, I found evidence of the Section corner of sections 13, 14, 23, 24 Township 39, North, Range 8 East, Fourth Principal Meridian, as described hereon; and that from this evidence I established a new monument and accessories as described hereon to perpetuate the original location of this corner.

Resident witnesses:

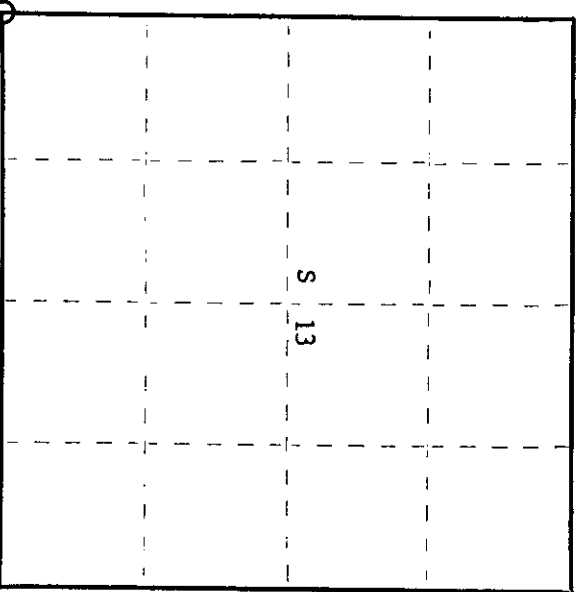


History of original corner establishment:  
Corner established by Alexander Anderson, deputy surveyor, in 1863 from which yellow pine 10" bears S 36-1/2° W, 16 links and yellow pine 10" bears N 72° E, 17 links.

Description of corner evidence found:  
Recovered an old cedar post lying down beside a 2" x 36" iron pipe, projecting 18" above ground.  
W.V.I.C. - O.B.T.  
R.Pine 20" (22) S22°W 13.9 feet, scribing grown over.  
Pine stump N67°W 8.70 feet, scribed S14-B.T.  
Pine stump S67°W 7.40 feet, scribed B.T.

Description of monument and accessories I established to perpetuate the original location of this corner.  
Replaced iron pipe with a federal A-1 Oneida County monument alloy cap, stamped:  
Monument projects 8" above ground.

Marked NBT's -  
R.Pine 4" S56°W 28.20 feet, scribed S.C. BT. T39N R8E  
R.Pine 4" N59°W 11.32 feet, " " " 14+13  
J.Pine 7" N46°E 25.60 feet, " " " 23+24  
S1537-1980



○ = Corner monument restored.

Dated at Rhineland, Wis., this 13th day of October, 1980

Signature: Daniel K. Pleoeger Title Registered Land Surveyor Registration No. 1537  
(County Surveyor, Registered Land Surveyor, or other duly authorized official)

Office of Register of Deeds, County of Oneida  
Instrument was filed in this office for record on the 20th day of October, 1980  
at 100 o'clock P. M. I hereby certify that the within

Dennis George Kuehn  
(Register of Deeds)

By: \_\_\_\_\_ Deputy

3908140000

# U.S. PUBLIC LAND SURVEY MONUMENT RECORD

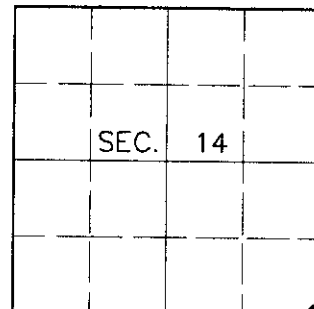
Note: This form is intended and designed to fulfill all requirements of Wisconsin Administrative Code, Chapter A-E 7.08, U.S. Public Land Survey Monument Record (3)(a)(b)(c)(d)(e)(f)(g)(h)(i). An additional sheet may be added if necessary to conform with said requirements.

**(a) CORNER LOCATION**

Southeast Corner of Section 14  
 Township 39 North  
 Range 8 East  
 Town of Newbold

State Plane Coordinates

X  
 Y  
 Datum  
 County of Oneida



**(b) HISTORY OF ORIGINAL CORNER ESTABLISHMENT**

Original Surveyor: Alexander Anderson

Original Bearing Trees:

Date of Survey: Commenced July 22, 1863  
 Completed July 31, 1863

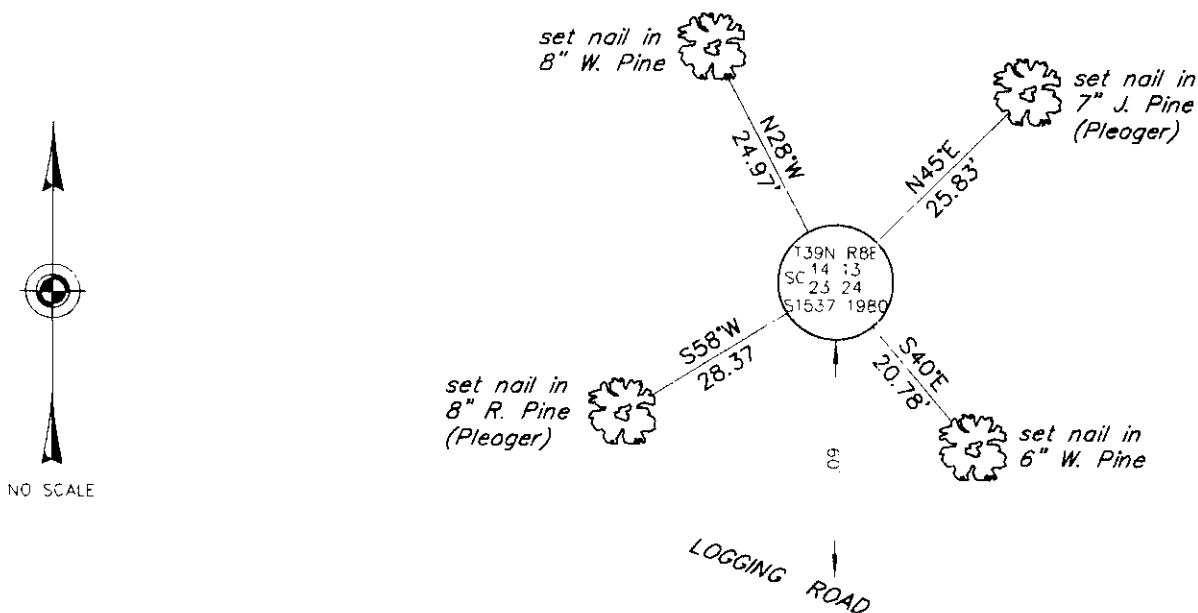
Y. Pine 10 S36-1/2°W, 16 links  
 Y. Pine 10 N72°E, 17 links

(b)(f)(g)(h) Description of monument found at this corner and if it was accepted, state all evidence (material, testimonial, occupational, plats, records, other monuments) used as a basis for accepting. If not accepted or if nothing was found, state evidence used as basis for establishing location. If reestablished through lost corner proportionate methods, indicate all monuments, distances and directions used to establish. Indicate type of monument and sign post found or set.

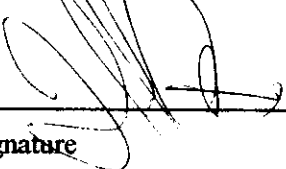
October 13, 1980: Certified Land Corner Restoration by Daniel K. Pleoger, Registered Land Surveyor. Pleoger set an Oneida County capped monument with the following bearing trees: 4" R. Pine S56°W, 28.20 feet; 4" R. Pine N59°W, 11.32 feet; 7" J. Pine N46°E, 25.60 feet.

June 28, 2000: I found and accepted a 2-1/2" dia. aluminum pipe with 3-1/4" dia. Oneida County aluminum cap 8" above grade and marked as shown below. I found Pleoger's dead R. Pine 5" N55°W, 11.6 feet. I established accessories as shown below and set a plastic sign post North, 1 foot.

(c)(d)(e) Plan view of corner with ties to at least 4 witness monuments. If in disagreement with previously established corner, show the distances between the two corners and also indicate the ties to the disputed corner.



(i) I, Jeffrey W. Austin, Registered Land Surveyor S-1885, hereby certify that the corner location on this record was determined by me or under my direction and control and that this U.S. Public Land Survey Monument Record is correct and complete to the best of my knowledge and belief.

  
 Signature \_\_\_\_\_ Date 7-30-00



INDEX NO. N-21

3908140000