

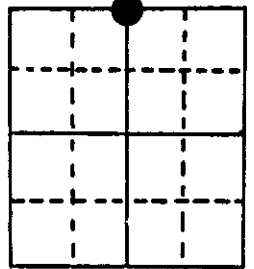
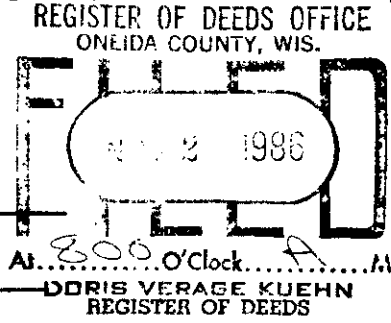
U.S. PUBLIC LAND SURVEY MONUMENT RECORD

Note: This form is intended and designed to fulfill all requirements of Wisconsin Administrative Code, Chapter A-E 5.02, U.S. Public Land Survey Monument Record (3) (a) (b) (c) (d) (e) (f) (g) (h) (i). An additional sheet may be added if necessary to conform with said requirements.

(a) Corner location: Township 39 North
 Range 8 East/West

Town/City/Village Newbold

County Oneida

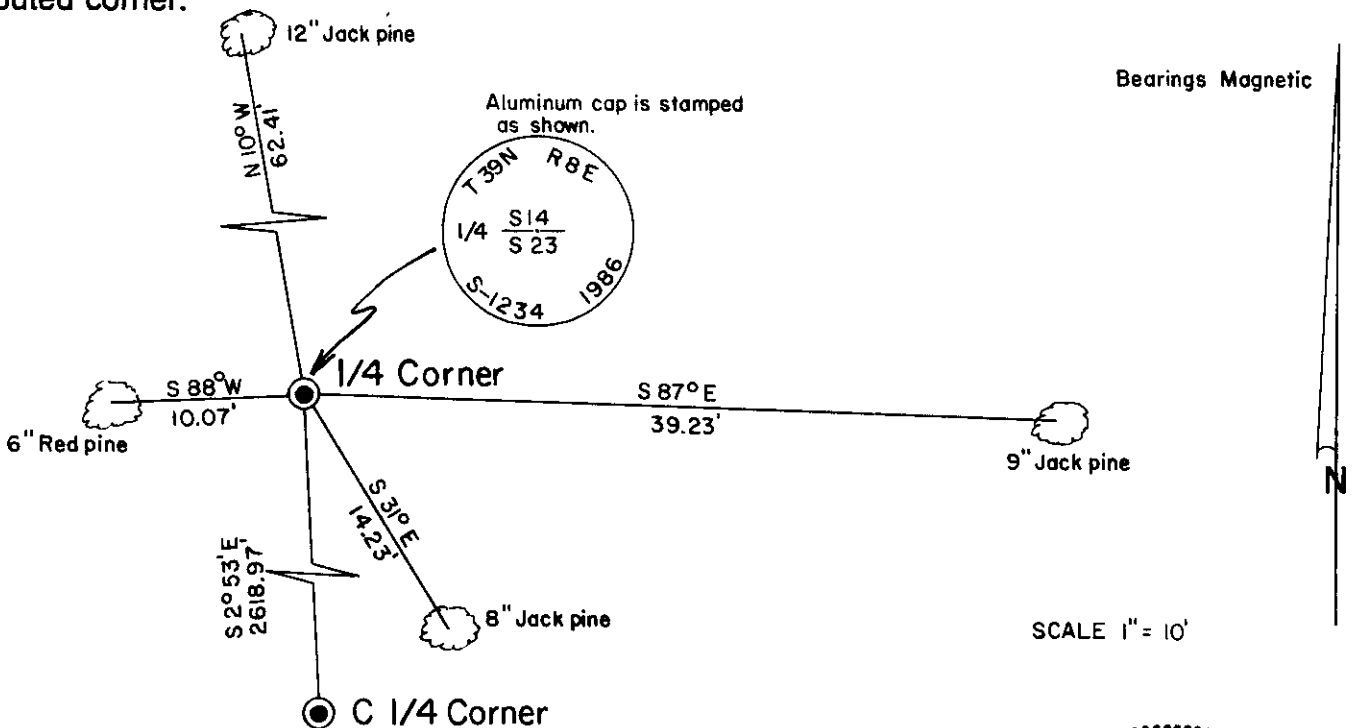


Section 23

(b) (f) (g) (h) Description of monument found at this corner and if it was accepted, state all evidence (material, testimonial, occupational, plats, records, other monuments) used as a basis for accepting. If not accepted or if nothing was found, state evidence used as basis for establishing location. If reestablished through lost corner proportionate methods, indicate all monuments, distances and directions used to establish.

- July 1863 - Alexander Anderson, Deputy Surveyor - Set ¼ Section post B.T.'s: Tamarac 7", N52°E, 39 links - Tamarac 8", S15°W, 16 links.
- March 24, 1953 - F. R. Wincentzen - Map by Genisot Engineering Co. Shows corner as a 5" x 5" post being in original position, with B.T.'s: Spr. Pine, N11°W, 62 feet - Spr. Pine, N88°E, 39.2 feet.
- Sept. 19, 1986 - James D. Rein - Found rotted off base of Wincentzen's post and bearing trees: 12" Jack Pine, N10°W, 62.41 feet and 9" Jack Pine S87°E, 39.23 feet. Set capped 2" dia. x 60" long flange bottom aluminum monument projecting 14" above ground. Corner is located in sand bottom swamp. made 2 new B.T.'s: 8" Jack Pine S31°E, 14.23 feet and 6" Red Pine, S88°W, 10.07 feet. Distances to trees are measured to an aluminum nail set in center of root crown on side of trees.

(c) (d) (e) Plan view of corner with ties to at least 4 witness monuments. If in disagreement with previously established corner, show the distances between the two corners and also indicate the ties to the disputed corner.

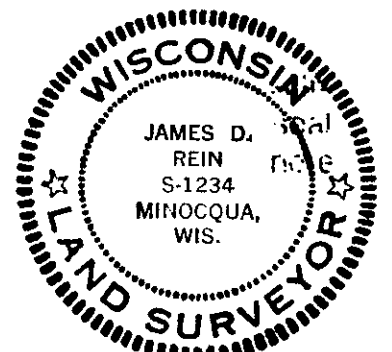


(i) I, James D. Rein, Registered Land Surveyor No. S-1234
 (type or print name) certify that the corner location on this record was determined by me or under my direction and control and that this U.S. Public Land Survey Monument Record is correct and complete to the best of my knowledge and belief.

James D. Rein
 Signature

September 24th, 1986

Date



Index No. N-19

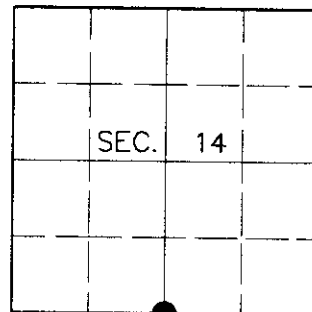
3908140020

U.S. PUBLIC LAND SURVEY MONUMENT RECORD

Note: This form is intended and designed to fulfill all requirements of Wisconsin Administrative Code, Chapter A-E 7.08, U.S. Public Land Survey Monument Record (3)(a)(b)(c)(d)(e)(f)(g)(h)(i). An additional sheet may be added if necessary to conform with said requirements.

(a) CORNER LOCATION
 South ¼ Corner of Section 14
 Township 39 North
 Range 8 East
 Town of Newbold

State Plane Coordinates
 X
 Y
 Datum
 County of Oneida



(b) HISTORY OF ORIGINAL CORNER ESTABLISHMENT

Original Surveyor: Alexander Anderson

Original Bearing Trees:

Date of Survey: Commenced July 22, 1863
 Completed July 31, 1863

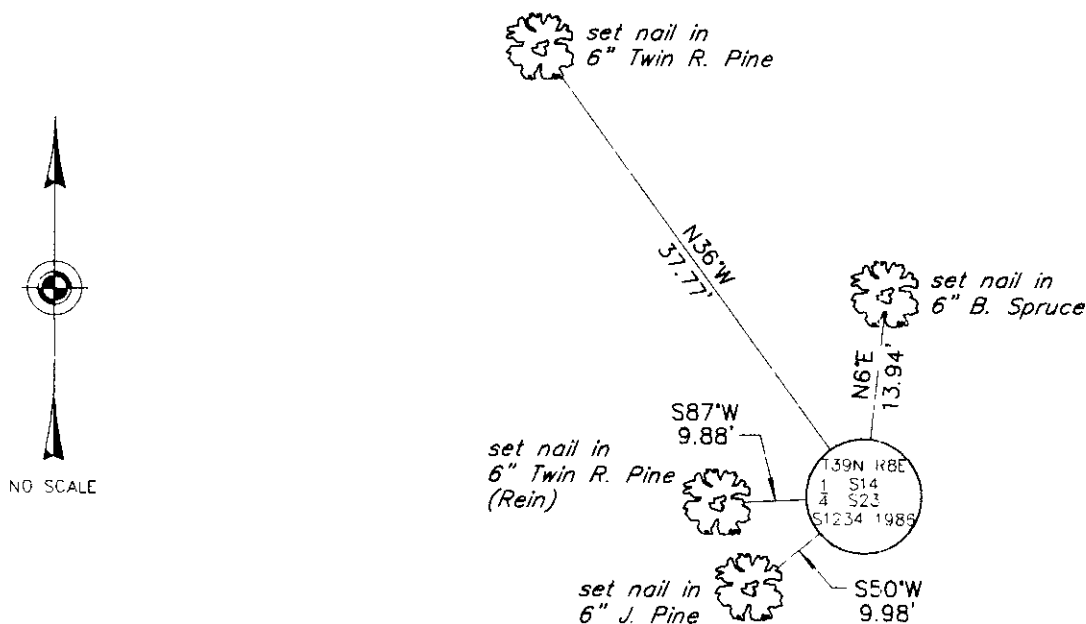
Tamarack 7 N52°E, 39 links
 Tamarack 8 S15°W, 16 links

(b)(f)(g)(h) Description of monument found at this corner and if it was accepted, state all evidence (material, testimonial, occupational, plats, records, other monuments) used as a basis for accepting. If not accepted or if nothing was found, state evidence used as basis for establishing location. If reestablished through lost corner proportionate methods, indicate all monuments, distances and directions used to establish. Indicate type of monument and sign post found or set.

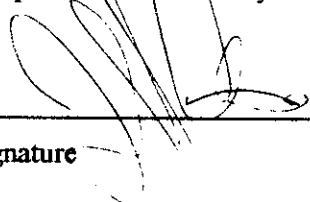
September 24, 1986: U.S. Public Land Survey Monument Record by James D. Rein, Registered Land Surveyor. Rein set a capped aluminum monument with the following bearing trees: 9" J. Pine S87°E, 39.23 feet; 8" J. Pine S31°E, 14.23 feet; 6" R. Pine S88°W, 10.07 feet; 12" J. Pine N10°W, 62.41 feet.

June 28, 2000: I found and accepted a 2-½" dia. aluminum pipe with 3-¼" dia. aluminum cap 12" above grade and marked as shown below. I found all but one of Rein's trees wind-thrown. I established accessories as shown below and set a plastic sign post South, 1 foot.

(c)(d)(e) Plan view of corner with ties to at least 4 witness monuments. If in disagreement with previously established corner, show the distances between the two corners and also indicate the ties to the disputed corner.



(i) I, Jeffrey W. Austin, Registered Land Surveyor S-1885, hereby certify that the corner location on this record was determined by me or under my direction and control and that this U.S. Public Land Survey Monument Record is correct and complete to the best of my knowledge and belief.



 Signature

7 29 00

 Date



INDEX NO. N-19

3908140020