

CERTIFIED LAND CORNER RESTORATION

Index No. L-21

State of Wisconsin

County of Oneida } ss.

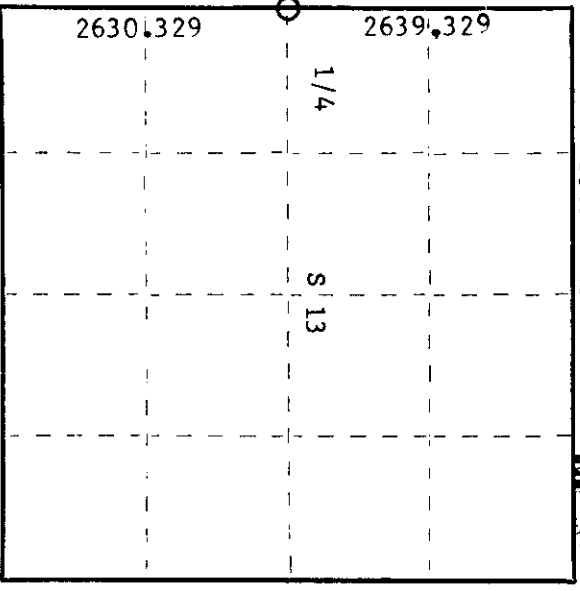
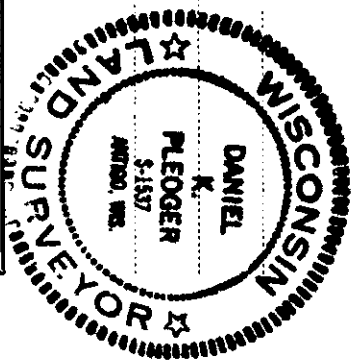
I Daniel K. Pleoeger, do hereby

certify that on the 18th day of July, 1980, I found established the quarter corner of sections 13 and 14

Township 39 North, Range 8 East, Fourth Principal Meridian,

as described hereon; and that from this evidence I established a new monument and accessories as described hereon to perpetuate the original location of this corner.

Resident witnesses:



O = Corner monument restored.

History of original corner establishment:

Corner established by Alexander Anderson, deputy surveyor, in 1863 from which tamarack 8" bears S 11° W 48 links and tamarack 10" bears S 67-1/2° E 49 links.

Description of corner evidence found:

No evidence of any corner found.  
 Corner established by traverse and computation.  
 Ran traverse from section corner 13, 14, 23, 24 to section corner 11, 12, 13, 14 for a distance of 5260.658 feet at bearing N 2° 33' 33"E. Set 1/4 corner 2630.329 feet intermediate.

Description of monument and accessories: I established to perpetuate the original location of this corner.

Set an Oneida County federal monument A. 1 with alloy cap, stamped:  
 Monument projects 6" above ground.

Marked NBT's  
 Maple 5" S34°E 25.65 feet T39N R8E  
 Maple 4" S2°E 34.60 feet 1/4 14 13  
 Maple 4" S29°W 27.40 feet  
 scribed B.T. S1537-1980

Dated at Rhineland, Wis. this 13th day of October, 1980

Signature: Daniel K. Pleoeger, Title: Registered Land Surveyor, Registration No. 1537  
 (County Surveyor, Registered Land Surveyor, or other duly authorized official)

Office of Register of Deeds, County of Oneida, I hereby certify that the within instrument was filed in this office for record on the 20th day of October, 1980 at 1:00 o'clock P.M.

*Terri Leage Fuchs*  
 (Register of Deeds)

By: Deputy

3908142000

# U.S. PUBLIC LAND SURVEY MONUMENT RECORD

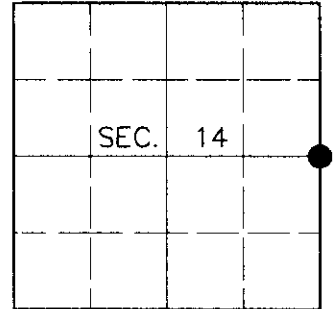
Note: This form is intended and designed to fulfill all requirements of Wisconsin Administrative Code, Chapter A-E 7.08, U.S. Public Land Survey Monument Record (3)(a)(b)(c)(d)(e)(f)(g)(h)(i). An additional sheet may be added if necessary to conform with said requirements.

**(a) CORNER LOCATION**

East ¼ Corner of Section 14  
 Township 39 North  
 Range 8 East  
 Town of Newbold

**State Plane Coordinates**

X  
 Y  
 Datum  
 County of Oneida



**(b) HISTORY OF ORIGINAL CORNER ESTABLISHMENT**

Original Surveyor: Alexander Anderson

Original Bearing Trees:

Date of Survey: Commenced July 22, 1863  
 Completed July 31, 1863

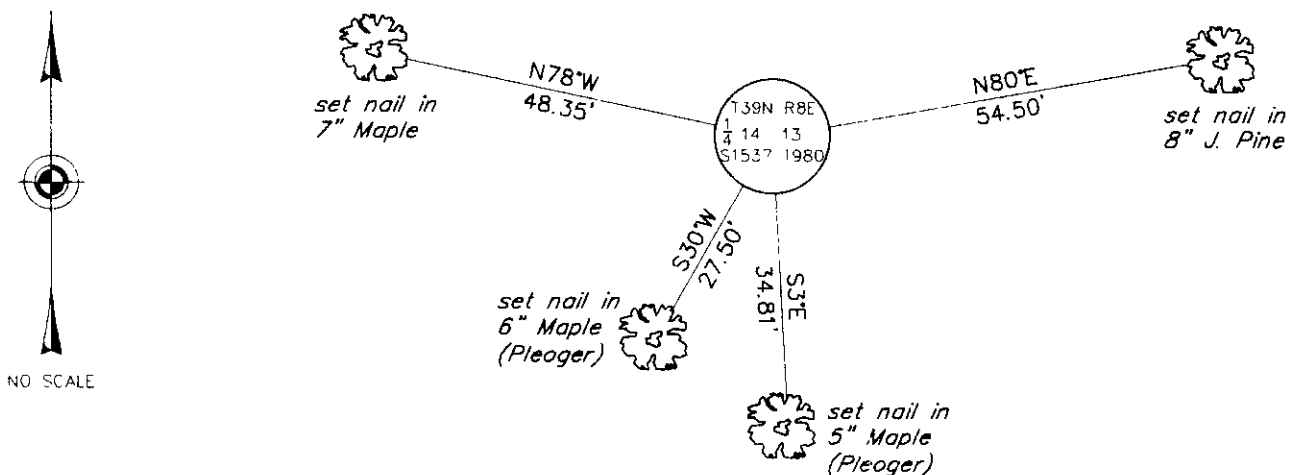
Tamarack 8 S11°W, 48 links  
 Tamarack 10 S67-½°E, 49 links

(b)(f)(g)(h) Description of monument found at this corner and if it was accepted, state all evidence (material, testimonial, occupational, plats, records, other monuments) used as a basis for accepting. If not accepted or if nothing was found, state evidence used as basis for establishing location. If reestablished through lost corner proportionate methods, indicate all monuments, distances and directions used to establish. Indicate type of monument and sign post found or set.

October 13, 1980: Certified Land Corner Restoration by Daniel K. Pleoger, Registered Land Surveyor. Pleoger set an Oneida County capped monument with the following bearing trees: 5" Maple S34°E, 25.65 feet; 4" Maple S2°E, 34.60 feet; 4" Maple S29°W, 27.40 feet.

June 30, 2000: I found and accepted a 2-½" dia. aluminum pipe with 3-¼" dia. Oneida County aluminum cap 10" above grade and marked as shown below. I established accessories as shown below and set a plastic sign post Southeast, 1 foot.

(c)(d)(e) Plan view of corner with ties to at least 4 witness monuments. If in disagreement with previously established corner, show the distances between the two corners and also indicate the ties to the disputed corner.



(i) I, Jeffrey W. Austin, Registered Land Surveyor S-1885, hereby certify that the corner location on this record was determined by me or under my direction and control and that this U.S. Public Land Survey Monument Record is correct and complete to the best of my knowledge and belief.

*[Handwritten Signature]*  
 \_\_\_\_\_  
 Signature

7 29 00  
 \_\_\_\_\_  
 Date



INDEX NO. L-21