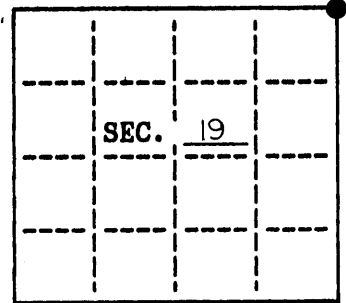


U.S. PUBLIC LAND SURVEY MONUMENT RECORD

Note: This form is intended and designed to fulfill all requirements of Wisconsin Administrative Code, Chapter X-E 7.08 U.S. Public Land Survey Monument Record (3)(a)(b)(c)(d)(e)(f)(g)(h)(i). An additional sheet may be added if necessary to conform with said requirements.

(a) CORNER LOCATION: State Plane Coordinates
 NE corner of Sec. 19 X _____
 Township 39 North Y _____
 Range 8 East Datum Base _____
 Town/City NEWBOLD County of _____



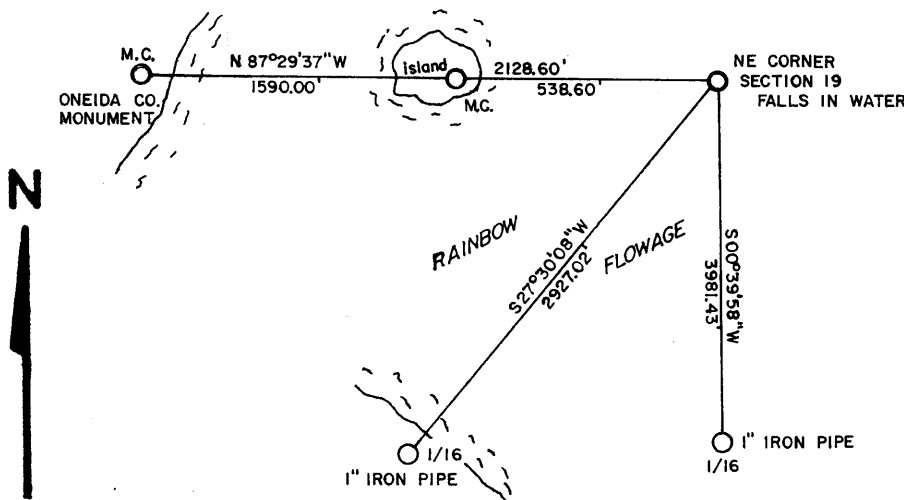
(b) HISTORY OF ORIGINAL CORNER ESTABLISHMENT
 Original Surveyor: ALEXANDER ANDERSON
 Date of Survey: Commenced 1863
 Completed 1863

Original B.T.'S
 W. PINE 14" N6E 16
 W. PINE 12" N48W 48

(b)(f)(g)(h) Description of monument found at this corner and if it was accepted, state all evidence (material, testimonial, occupational, plats, records, other monuments) used as a basis for accepting. If not accepted or if nothing was found, state evidence used as basis for establishing location. If reestablished through lost corner proportionate methods, indicate all monuments, distances and directions used to establish. Indicate type of monument and sign post found or set.

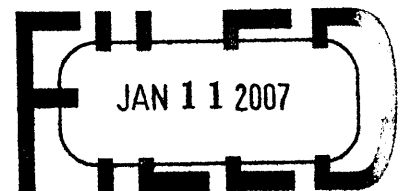
CORNER POSITION AS MONUMENTED BY R.W. SMITH IN 1938-1939 NOW FALLS IN WATER (RAINBOW FLOWAGE)
 POSITION WAS USED IN SUBDIVISION OF SECTION 19 (GENISOT MAP 10375)

(c)(d)(e) Plan view of corner with ties to at least 4 witness monuments. If in disagreement with previously established corner, show the distances between the two corners and also indicate the ties to the disputed.

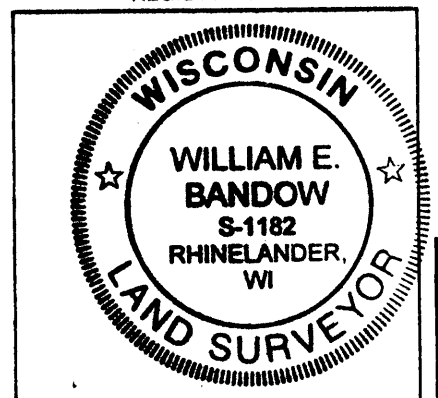


NO SCALE
 BEARINGS BASED ON ONEIDA COUNTY COORDINATE SYSTEM

REGISTER OF DEEDS OFFICE
 ONEIDA COUNTY, WIS.



At _____ O'Clock _____ M
 THOMAS H. LEIGHTON
 REGISTER OF DEEDS



3908180000

(i) I, William E. Bandow
 hereby certify that the corner location on this record was determined by me or under my direction and control and that this U.S. Public Land Survey Monument Record is correct and complete to the best of my knowledge and belief.

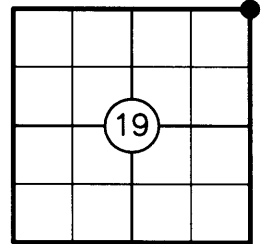
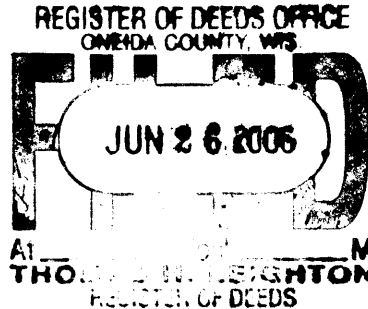
William E. Bandow 1-3-07
 Signature Date

U.S. PUBLIC LAND SURVEY MONUMENT RECORD

NOTE: THIS FORM IS INTENDED AND DESIGNED TO FULFILL ALL REQUIREMENTS OF WISCONSIN ADMINISTRATIVE CODE CHAPTER A-E 7.08 U.S. PUBLIC LAND SURVEY MONUMENT RECORD (3) (a)(b)(c)(d)(e)(f)(g)(h)(i). AN ADDITIONAL SHEET MAY BE ADDED IF NECESSARY TO CONFIRM WITH SAID REQUIREMENTS.

(a) CORNER LOCATION:

NE CORNER OF SECTION 19
 TOWNSHIP 39 NORTH
 RANGE 8 EAST
 TOWN OF NEWBOLD
 COUNTY OF ONEIDA



(b) HISTORY OF ORIGINAL CORNER:

ORIGINAL SURVEYOR: ALEXANDER ANDERSON
 DATE OF SURVEY: COMMENCED JULY, 1863
 COMPLETED JULY, 1863

ORIGINAL BEARING TREES: 14" W. PINE - N06°E, 16 LKS.
 12" W. PINE - N48°W, 48 LKS.

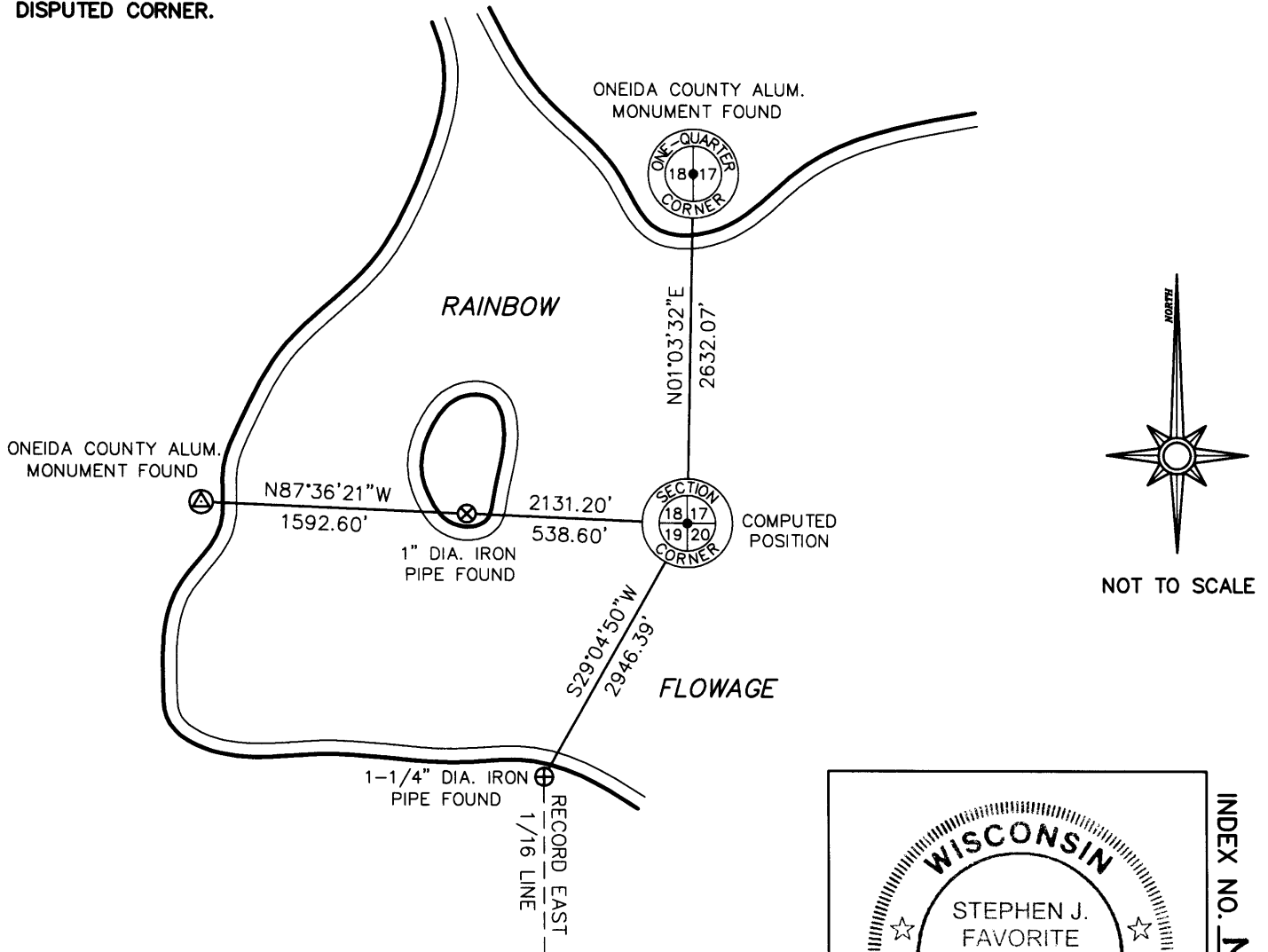
(f)(g)(h) DESCRIPTION OF MONUMENT FOUND AT THIS CORNER AND IF IT WAS ACCEPTED STATE ALL EVIDENCE (MATERIAL, TESTIMONIAL, OCCUPATIONAL, PLATS, RECORDS, OTHER MONUMENTS) USED AS A BASIS FOR ESTABLISHING LOCATION. IF REESTABLISHING THROUGH LOST CORNER PROPORTIONATE METHODS, INDICATE ALL MONUMENTS, DISTANCES, AND DIRECTIONS USED TO ESTABLISH. INDICATE TYPE OF MONUMENT AND SIGN POST FOUND OR SET.

1939: R.W. SMITH, W.V.I.C. SURVEYOR, FOUND A BT STUMP IN THE FLOWAGE AS DESCRIBED IN FISHER'S NOTES. SMITH SET 2 WITNESS CORNERS ON THE SECTION LINE WEST OF THIS POSITION.

2002: WILLIAM BADOW, RLS, COMPUTES THE SECTION CORNER LOCATION USING THE 2 WITNESS CORNERS SET BY R. W. SMITH IN HIS SURVEY OF SECTION 19.

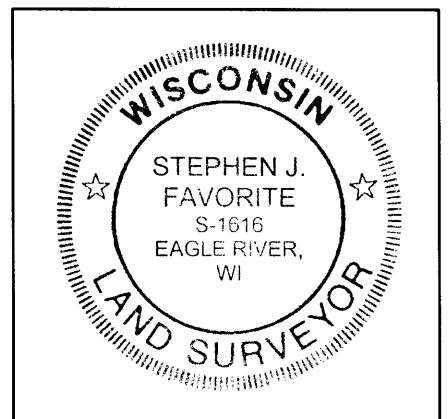
2005: I FOUND BOTH OF R. W. SMITH'S WITNESS CORNERS AND USED THEM TO COMPUTE THE SECTION CORNER LOCATION.

(c)(d)(e) PLAN VIEW OF CORNER WITH TIES TO AT LEAST FOUR WITNESSES. IF IN DISAGREEMENT WITH PREVIOUSLY ESTABLISHED CORNER, SHOW THE DISTANCES BETWEEN THE TWO CORNERS AND ALSO INDICATE THE TIE TO THE DISPUTED CORNER.



I STEPHEN J. FAVORITE, REGISTERED LAND SURVEYOR NO. 1616, HEREBY CERTIFY THAT THE CORNER LOCATION ON THIS RECORD WAS REFERENCED BY ME OR UNDER MY DIRECTION AND CONTROL AND THAT THIS U.S. PUBLIC LAND SURVEY MONUMENT RECORD IS COMPLETE TO THE BEST OF MY KNOWLEDGE AND BELIEF.

Stephen J. Favorite 2-13-06
 SIGNATURE DATE



INDEX NO. N 5

3908180000