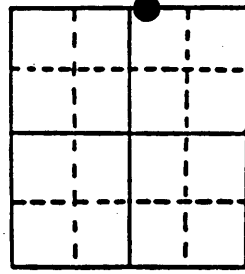


# U.S. PUBLIC LAND SURVEY MONUMENT RECORD

**Note:** This form is intended and designed to fulfill all requirements of Wisconsin Administrative Code, Chapter A-E 7.08 U.S. Public Land Survey Monument Record (3) (a) (b) (c) (d) (e) (f) (g) (h) (i). An additional sheet may be added if necessary to conform with said requirements.

(a) Corner location: Township 39 North  
 Range 8 East/West  
 Town/City/Village Newbold  
 County Oneida

Meander Corner on  
 North Section Line —  
 East of North Quarter  
 Corner.

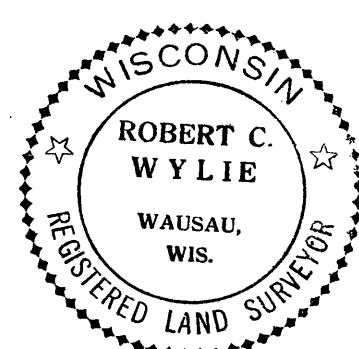
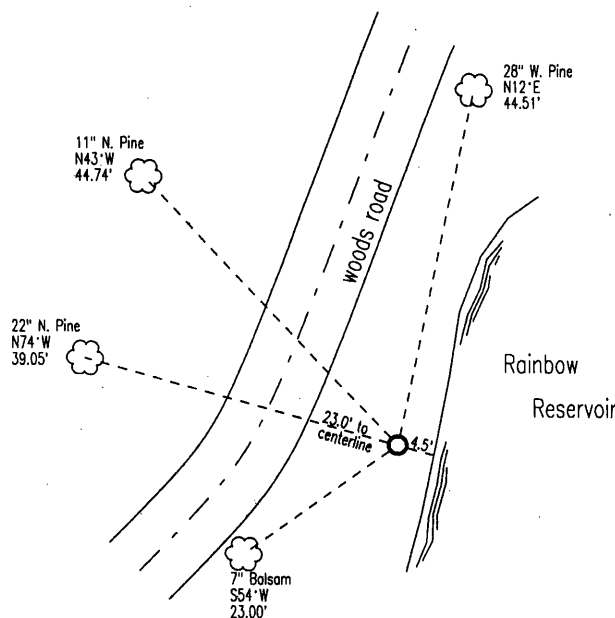


Section 19

(b) (f) (g) (h) Description of monument found at this corner and if it was accepted, state all evidence (material, testimonial, occupational, plats, records, other monuments) used as a basis for accepting. If not accepted or if nothing was found, state evidence used as basis for establishing location. If reestablished through lost corner proportionate methods, indicate all monuments, distances and directions used to establish. Indicate type of monument found or set and sign post.

This Meander Corner (2 1/2" iron pipe) was set by R. W. Smith about 1937. Found several times by Wisconsin Valley Improvement Company forester, L. G. Andreas, with two original bearing trees intact. Last found, by R. C. Wylie in April, 1999. Pipe leaning slightly. Bearing trees were re-marked and re-measured. Two new bearing trees were established. On May 15, 2001 the iron pipe was replaced with an Oneida County aluminum monument and all bearing trees were re-marked and re-measured. All measuring points are to a PK nail about 1' above the ground on the side of each tree. An aluminum placard was placed on each bearing tree and a plastic post was placed near the monument.

(c) (d) (e) Plan view of corner with ties to at least 4 witness monuments. If in disagreement with previously established corner, show the distances between the two corners and also indicate the ties to the disputed corner.



(i) I, \_\_\_\_\_  
 (type or print name) certify that the corner location on this record was determined by me or under my direction and control and that this U.S. Public Land Survey Monument Record is correct and complete to the best of my knowledge and belief.

Robert C. Wylie May 24, 2001  
 Signature Date

Stamp  
 3908180014

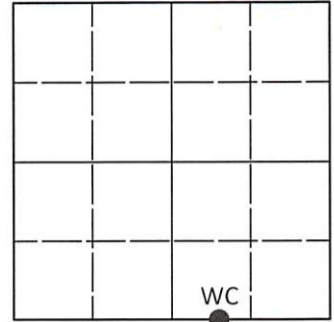
Index No. N 3-4

# U.S. PUBLIC LAND SURVEY MONUMENT RECORD

Note: This form is intended and designed to fulfill all requirements of Wisconsin Administrative Code, Chapter A-E 7.08 U.S. Public Land Survey Monument Record (3)(a-i).

(a) CORNER LOCATION  
 Witness Cor. of Secs. 18 & 19  
 Township 39 North  
 Range 8 East of the 4th P.M.  
 Town of Newbold  
 County of Oneida

WISCRS - Oneida County  
 N: 246,202.42 USft  
 E: 231,880.15 USft  
 Datum: NAD 83(2011) ep. 2010.00  
 GNSS Method: RTN - Offset  
 GNSS Control: WISCORS VRS



Sec. 18, T. 39 N., R. 8 E.

(b)(f)(g)(h) Description of monument found at this corner and if it was accepted, state all evidence (material, testimonial, occupational, plats, records, other monuments) used as a basis for accepting. If not accepted or if nothing was found, state evidence used as basis for establishing location. If re-established through lost corner proportionate methods, indicate all monuments, distances and directions used to establish. Indicate type of monument and sign post found or set.

*This record is a perpetuation of the following land corner document(s):*

*May 24, 2001: USPLS Monument Record by Robert C. Wylie, filed in Oneida County*

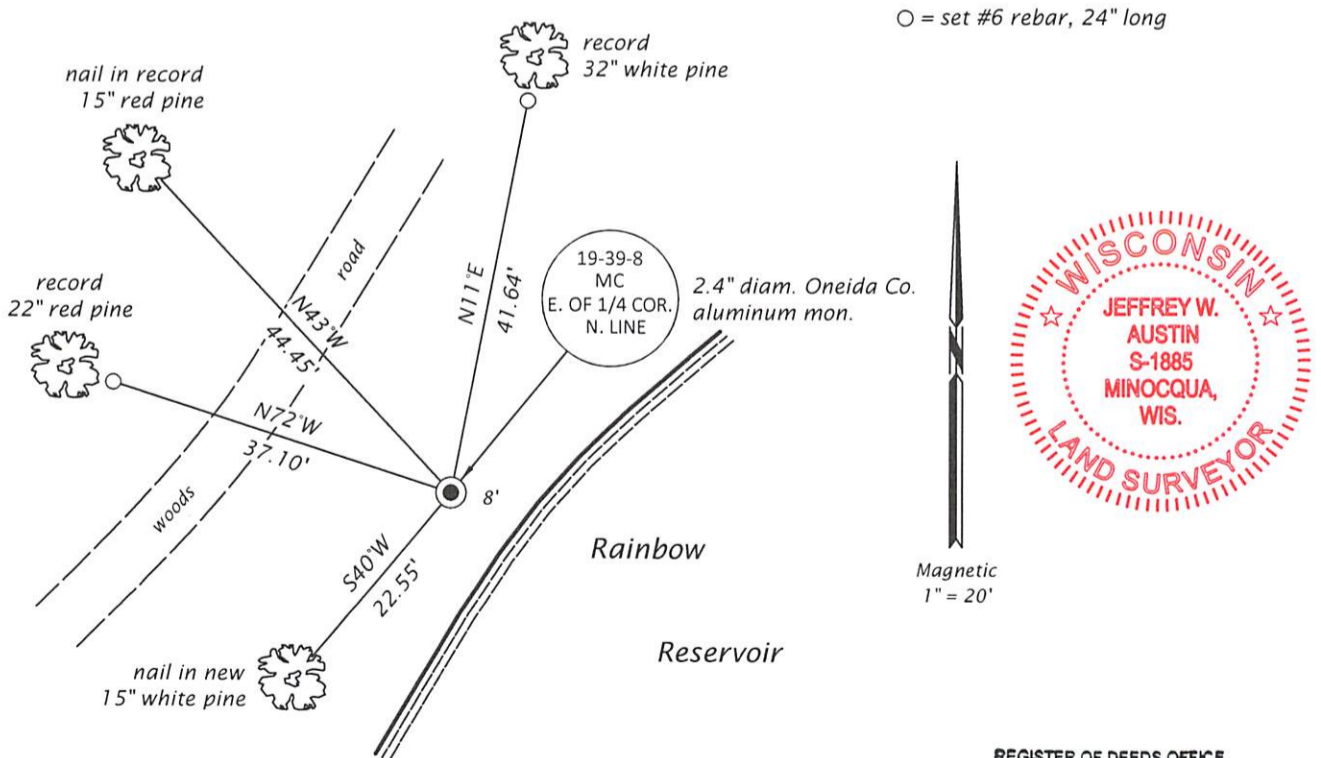
*A complete history of the corner can be found on the previous land corner document(s). I accept the record activity as a true and faithful perpetuation or reestablishment of the original corner location and further perpetuate it as described below.*

*February 21, 2006: On OCS Map No. C-2294, Stephen J. Favorite finds this monument to be 3.54 feet South of his interpretation of the section line.*

*July 15, 2023: I found and accepted the record monument, a 2.4" diam. aluminum pipe, firmly set, with a 3.3" diam. Oneida Co. aluminum cap flush with the ground surface. The record fir bearing tree is now a stump. I found or established accessories as indicated below. I found a white vinyl sign post bearing Southeast, 1.3 ft.*

*The coordinate value shown has been determined by traversing from two or more GNSS offset points satisfying the accuracy requirements defined and qualified in the 2022 Oneida County Fee Schedule for USPLS Corners.*

(c)(d)(e) Plan view of corner with ties to at least 4 witness monuments. If in disagreement with previously established corner, show the distances between the two corners and also indicate the ties to the disputed.



(i) I, Jeffrey W. Austin, Professional Land Surveyor No. S-1885, hereby certify that the corner location on this record was determined by me or under my direction and control and that this U.S. Public Land Survey Monument Record is correct and complete to the best of my knowledge and belief.

AUG - 1, 2023  
 \_\_\_\_\_  
 Signature Date

REGISTER OF DEEDS OFFICE  
 ONEIDA COUNTY  
 FILED

AUG 07 2023

KYLE J. FRANSON  
 REGISTER OF DEEDS