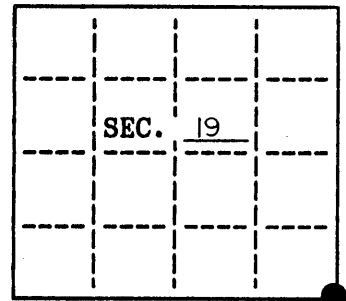


**U.S. PUBLIC LAND SURVEY MONUMENT RECORD**

Note: This form is intended and designed to fulfill all requirements of Wisconsin Administrative Code, Chapter A-8 7.08 U.S. Public Land Survey Monument Record (3)(a)(b)(c)(d)(e)(f)(g)(h)(i). An additional sheet may be added if necessary to conform with said requirements.

(a) CORNER LOCATION: State Plane Coordinates  
SE corner of Sec. 19 X \_\_\_\_\_  
 Township 39 North Y \_\_\_\_\_  
 Range 8 East Datum Base \_\_\_\_\_  
 Town/City NEWBOLD County of \_\_\_\_\_



(b) HISTORY OF ORIGINAL CORNER ESTABLISHMENT  
 Original Surveyor: ALEXANDER ANDERSON  
 Date of Survey: Commenced 1863  
 Completed 1863

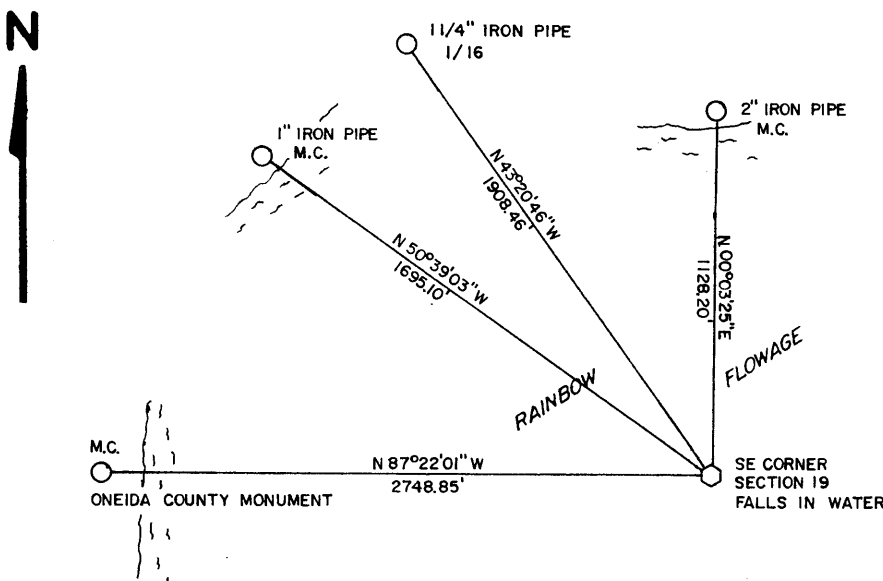
Original B.T.'S

ASPEN 5" N 49 1/2 W 11  
 ASPEN 5" N 77 E 20

(b)(f)(g)(h) Description of monument found at this corner and if it was accepted, state all evidence (material, testimonial, occupational, plats, records, other monuments) used as a basis for accepting. If not accepted or if nothing was found, state evidence used as basis for establishing location. If reestablished through lost corner proportionate methods, indicate all monuments, distances and directions used to establish. Indicate type of monument and sign post found or set.

CORNER POSITION AS MONUMENTED BY R.W. SMITH IN 1938-1939 NOW FALLS IN WATER (RAINBOW FLOWAGE). POSITION WAS USED IN SUBDIVISION OF SECTION 19 (GENISOT MAP 10375)

(c)(d)(e) Plan view of corner with ties to at least 4 witness monuments. If in disagreement with previously established corner, show the distances between the two corners and also indicate the ties to the disputed.

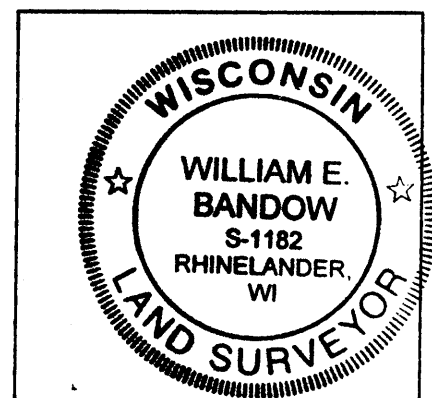


NO SCALE  
 BEARINGS BASED ON ONEIDA COUNTY COORDINATE SYSTEM

REGISTER OF DEEDS OFFICE  
 ONEIDA COUNTY, WIS.  
**FILED**  
 JAN 11 2007  
 At \_\_\_\_\_ O'Clock \_\_\_\_\_ M  
 THOMAS H. LEIGHTON  
 REGISTER OF DEEDS

(i) I, William E. Badow hereby certify that the corner location on this record was determined by me or under my direction and control and that this U.S. Public Land Survey Monument Record is correct and complete to the best of my knowledge and belief.

William E. Badow Signature  
1-3-07 Date



3908190000