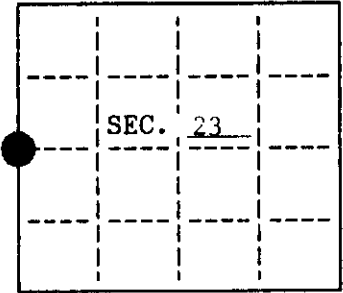


U. S. PUBLIC LAND SURVEY MONUMENT RECORD

Note: This form is intended and designed to fulfill all requirements of Wisconsin Administrative Code, Chapter A-E 7.08 U.S. Public Land Survey Monument Record (3)(a)(b)(c)(d)(e)(f)(g)(h)(i). An additional sheet may be added if necessary to conform with said requirements.

(a) CORNER LOCATION: State Plane Coordinates
W¹/₄ corner of Sec. 23 X ---
 Township 39 North Y ---
 Range 8 East Datum Base ---
 Town/City Newbold County of Oneida



(b) HISTORY OF ORIGINAL CORNER ESTABLISHMENT Original B.T.'S
 Original Surveyor: Alex Anderson

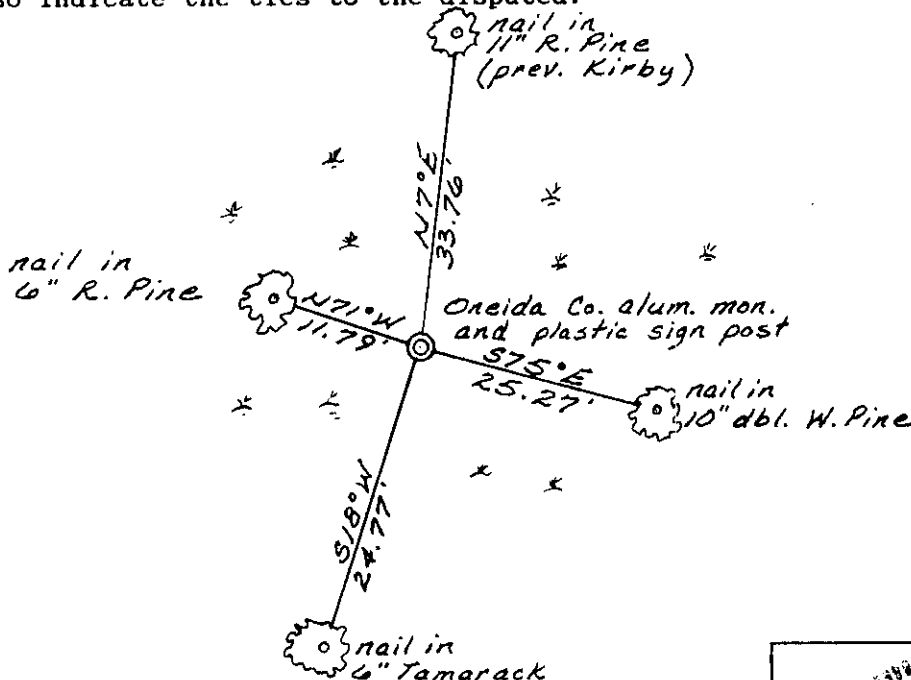
Date of Survey: ~~Commenced~~ July, 1863 5" Tamarack, S42° E, 20 lks
~~Completed~~ 5" Tamarack, N21° W, 15 lks

(b)(f)(g)(h) Description of monument found at this corner and if it was accepted, state all evidence (material, testimonial, occupational, plats, records, other monuments) used as a basis for accepting. If not accepted or if nothing was found, state evidence used as basis for establishing location. If reestablished through lost corner proportionate methods, indicate all monuments, distances and directions used to establish. Indicate type of monument and sign post found or set.

April, 1957: Joseph Kirby (Genisot Engineering), while doing a subdivision of the NW¹/₄, used a 5"x5" wood post for the location of the W¹/₄. He had the following bearing trees:
 5" spruce pine, S31°W, 102'; 4" N. pine, N3°E, 33.8'.

Oct., 1993: I found and accepted the wood post used by Kirby. I replaced said wood post with an Oneida Co. alum. mon. (60" long) and set a plastic survey marker post near the corner.

(c)(d)(e) Plan view of corner with ties to at least 4 witness monuments. If in disagreement with previously established corner, show the distances between the two corners and also indicate the ties to the disputed.



(i) I, Charles E. Winkler S-1431
 hereby certify that the corner location on this record was determined by me or under my direction and control and that this U.S. Public Land Survey Monument Record is correct and complete to the best of my knowledge and belief.

Charles E. Winkler 5-20-94
 Signature Inman-Foltz and Associates, Inc. Date



INDEX NO. P-17

3908222000