

U.S. PUBLIC LAND SURVEY MONUMENT RECORD

Note: This form is intended and designed to fulfill all requirements of Wisconsin Administrative Code, Chapter A-E 7.08 U.S. Public Land Survey Monument Record (3) (a) (b) (c) (d) (e) (f) (g) (h) (i). An additional sheet may be added if necessary to conform with said requirements.

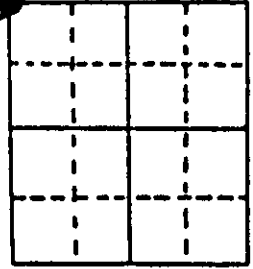
(a) Corner location: Township 39 North Corner: N W Section Corner & MC

Section 25 Range 8 East Original Surveyor: A. Anderson

Town/City/Village Newbold

Original B.T.'s: 12" Pw N80°E 109 lks
14" Pw S67°E 81 lks

County Oneida

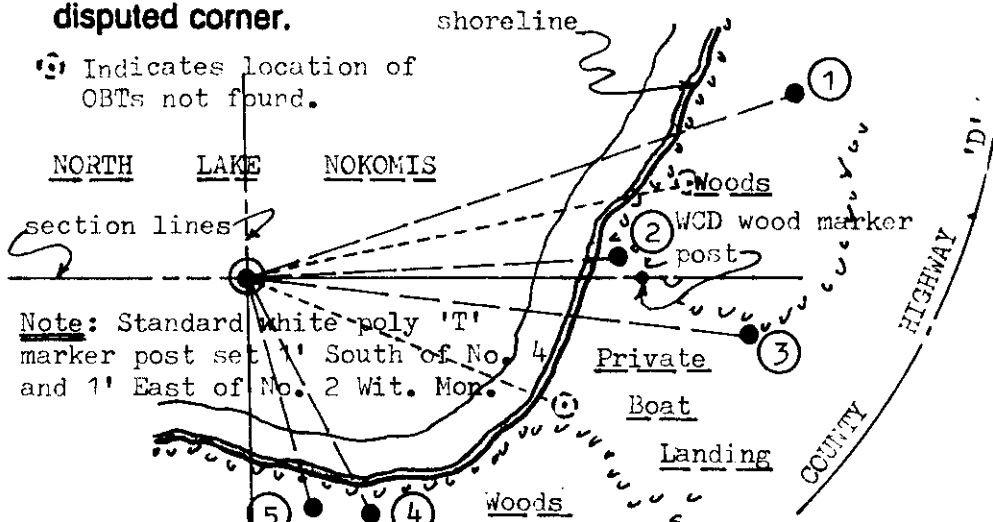


Note: Recovery witnessed by William Malnberg, a nearby local landowner to East. Original Survey Date: July 1863 ● Location

(b) (f) (g) (h) Description of monument found at this corner and if it was accepted, state all evidence (material, testimonial, occupational, plats, records, other monuments) used as a basis for accepting. If not accepted or if nothing was found, state evidence used as basis for establishing location. If reestablished through lost corner proportionate methods, indicate all monuments, distances and directions used to establish. Indicate type of monument found or set and sign post.

No original GLO survey evidence found or verified at corner. In 1964, during section surveys by Ilg/WCD he notes a standard WCD capped iron pipe monument in 18" of lake water at this corner and that it was set from an original GLO BT pine stump; he also notes existing BTs by Hassler, a 36" Pw N71°E 1.364 chains and a 4" Sb S14°E 0.652 chains he found rotted off; and noted existing BTs by Berndt/WCD as 16" Pn N66°E 1.500 chains and a 12" Pw S83°E 1.185 chains. Hasslers BT NE Pw found with lower face blaze open and plain which I used for new ties below, and his SE Sb BT not found. Also found Berndts NE Pn BT as dead 14" Pn with lower face blaze and scribing very plain as bark gone, and Berndts SE Pw BT with lower face blaze fissure at root crown plain which I used for new ties below. Upon measuring bearings and distances from found record BTs into lake, I could not find the WCD capped iron pipe monument at corner by visual underwater inspection or by magnetic locator; however, I did find numerous rocks lying in a circular pattern on the lake bottom at the corner location, which undoubtedly had been a rock cairn previously erected around the WCD capped monument, prior to its obvious removal from the lake bed location. I carefully positioned and set a 1" dia. x 18" long iron pipe in the lake bed with a 3/4" x 12" steel rod insert at the corner location amidst the rocks as it was not possible to set a larger capped monument without extensive excavation of rocks in the 18" of lake water present. This recovery completed July 10, 1997.

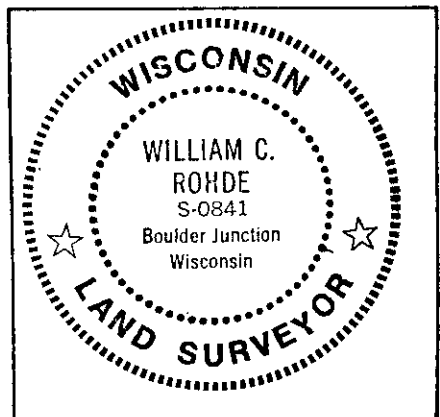
(c) (d) (e) Plan view of corner with ties to at least 4 witness monuments. If in disagreement with previously established corner, show the distances between the two corners and also indicate the ties to the disputed corner.



- Witness Monument Ties:**
- ① Record BT 26" Pw N73°E 90.05'
 - ② 1" dia. x 24" iron pipe set with poly reference mark plug N88°E 58.48'.
 - ③ Record BT 16" Pw S82°E 78.50'
 - ④ 1" dia. x 30" iron pipe set with poly reference mark plug S25°E 41.80'.
 - ⑤ New BT 7" Sw S14°E 37.85'.

Unless otherwise indicated, all BT witness monument ties are to a 1/4" dia. by 2.5" long PK nail with 1.25" dia. steel washer set in unblazed right face bark; and a PK nail with 2" dia. steel washer stamped BT also set in unblazed front face bark of each BT at DBH. All previous corner recovery notes from Wisconsin DNR and/or Oneida County survey records.

Scale: 1" = 30'



(i) I, William C. Rohde, RLS 841
(type or print name) certify that the corner location on this record was determined by me or under my direction and control and that this U.S. Public Land Survey Monument Record is correct and complete to the best of my knowledge and belief.

William C. Rohde Signature Date July 12, 1997

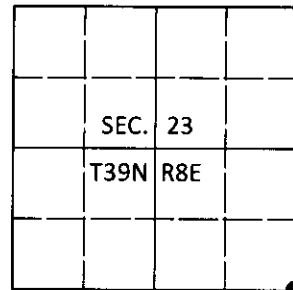
Index No. R 21

U.S. PUBLIC LAND SURVEY MONUMENT RECORD

Note: This form is intended and designed to fulfill all requirements of Wisconsin Administrative Code, Chapter A-E 7.08 U.S. Public Land Survey Monument Record (3)(a-i).

(a) CORNER LOCATION
 Cor. of Secs. 23, 24, 25 & 26
 Township 39 North
 Range 8 East of the 4th P.M.
 Town of Newbold
 County of Oneida

WISCORS - Oneida County
 N: 240,865.55 USft
 E: 254,787.71 USft
 Datum: NAD 83(2011)
 GNSS Method: RTN - Offset
 GNSS Control: WISCORS VRS



(b) HISTORY OF ORIGINAL CORNER ESTABLISHMENT

Original Surveyor: _____ Original Accessories: _____
 Date of Survey _____ Commenced: _____ See previous USPLS Monument Record
 Completed: _____

(b)(f)(g)(h) Description of monument found at this corner and if it was accepted, state all evidence (material, testimonial, occupational, plats, records, other monuments) used as a basis for accepting. If not accepted or if nothing was found, state evidence used as basis for establishing location. If re-established through lost corner proportionate methods, indicate all monuments, distances and directions used to establish. Indicate type of monument and sign post found or set.

This is a perpetuation of a previous USPLS Monument Record by William C. Rohde, RLS dated July 12, 1997 and filed in the office of the Oneida County Register of Deeds. A complete history of the corner can be found on the previous monument record. I accept the previous location as a true and faithful perpetuation or reestablishment of the original corner location and further perpetuate it as follows.

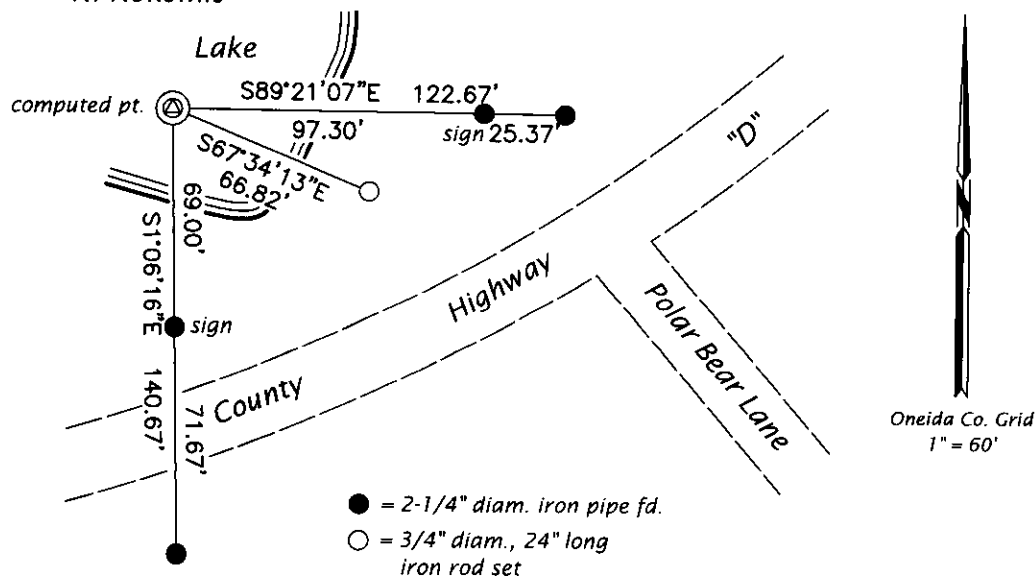
June, 1971: OCS Map. No. C-171 by William S. Cameron identifies the corner as a point set on the ice using record bearing trees. Monuments were set 97.3' and 122.7' East of the corner and 69.0' and 140.8' South of the corner. I believe Rohde was not aware of this map's existence.

August 28, 2018: I found all of Rohde's bearing trees either down or gone. His reference monuments are at the high water mark and about to fall into the lake. The distance between them does not check the computed distance derived from published GPS coordinates. I believe one or both of the monuments have been displaced at least to some degree. I positioned the corner from the monuments of Cameron's survey as shown below.

The coordinate value shown has been verified by at least one of the following methods: 1) comparison to a previously GPS determined published value; 2) the value is the average of two or more GPS observations at a markedly different time; 3) one or more distances were measured back to the GPS observed corner from temporary GPS observed offset locations.

(c)(d)(e) Plan view of corner with ties to at least 4 witness monuments. If in disagreement with previously established corner, show the distances between the two corners and also indicate the ties to the disputed.

N. Nokomis



REGISTER OF DEEDS OFFICE
 ONEIDA COUNTY
 FILED

SEP 10 2018

KYLE J. FRANSON
 REGISTER OF DEEDS

(i) I, Jeffrey W. Austin, Professional Land Surveyor No. S-1885, hereby certify that the corner location on this record was determined by me or under my direction and control and that this U.S. Public Land Survey Monument Record is correct and complete to the best of my knowledge and belief.

[Handwritten Signature]

 Signature

SEP. 5, 2018

 Date