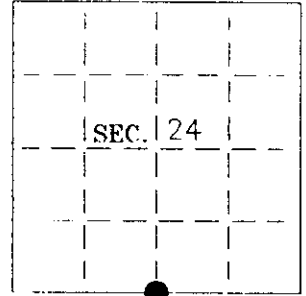


U. S. PUBLIC LAND SURVEY MONUMENT RECORD

Note: This form is intended and designed to fulfill all requirements of Wisconsin Administrative Code—Chapter
 a 2 7.00 U. S. Public Land Survey Monument Record (S)(a)(b)(c)(d)(e)(f)(g)(h)(i). An additional sheet may be
 added if necessary to conform with said requirements

(a) CORNER LOCATION: State Plane Coordinates
1/4 corner of Sec. 24 & 25 X _____
 Township 39 North Y _____
 Range 08 East Datum Base _____
 Town/~~CNX~~ Newbold County of Oneida



(b) HISTORY OF ORIGINAL CORNER ESTABLISHMENT:
 Original Surveyor: Alexander Anderson
 Date of Survey: Commenced July, 1863
 Completed July, 1863

Original B.T.'S
 Hemlock 6" S26°E 14 lks
 Birch 6" N5°W 11 lks

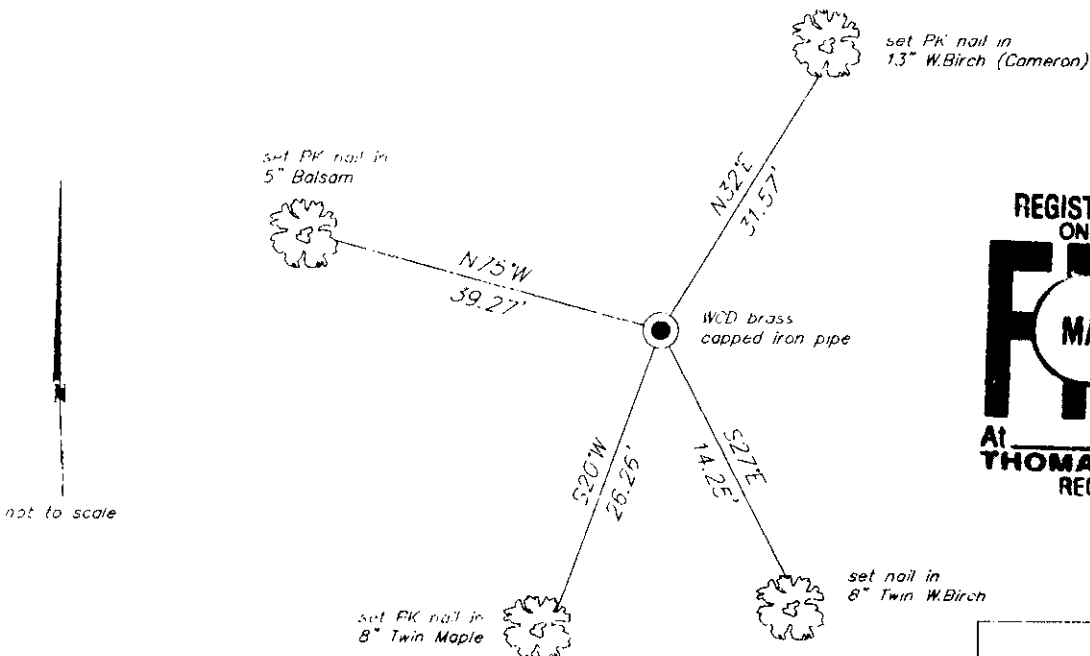
(b)(f)(g)(h) Description of monument found at this corner and if it was accepted—state all evidence (material—testimonial—occupation—plats—records—other monuments) used as a basis for accepting. If not accepted or if nothing was found state evidence used as basis for establishing location. If reestablished through lost corner proportionate methods indicate all monuments—distances and directions used to establish. Indicate type of monument and sign post found or set.

Wisconsin DNR notes: At 39.834 West of NE cor. & 39.782 East of NW cor. WCD pipe. BT present: PW 22" (stp) N67°E, 0.866 ch.; PN 24" (stp.) N74°W, 0.541 ch.; Wincentsen's BT BW 9" N29°E, 0.479 ch. New BT BW 7" N47°W, 0.603 ch. (Hlg 1964)

March, 1971. Map by William S. Cameron indicates corner is marked by a WCD brass capped iron pipe witnessed by: 7" W.Birch N46°W, 39.8', 9" W.Birch N29°E, 31.6'; 22" W.Pine stump N67°E, 57.2'.

February 5, 1996. I found and accepted a 2-1/2" dia. iron pipe with a 3" dia. WCD brass cap. I found and established accessories as shown below and set a plastic sign post Northwest, 1 foot.

(c)(d)(e) Plan view of corner with ties to at least 4 witness monuments. If in disagreement with previously established corner—show the distances between the two corners and also indicate the ties to the disputed.



REGISTER OF DEEDS OFFICE
 ONEIDA COUNTY, WIS.
FILED
 MAR 18 1996
 At _____ O'Clock _____ M
 THOMAS H. LEIGHTON
 REGISTER OF DEEDS

WISCONSIN
 CHARLES E. WINKLER
 S 1431
 MINOCQUA, WIS.
 LAND SURVEYOR

INDEX NO. R-23

(i) I Charles E. Winkler, Registered Land Surveyor S-1431
 hereby certify that the corner location on this record was determined by me or under my direction and control and that this U.S. Public Land Survey Monument Record is correct and complete to the best of my knowledge and belief.

Charles E. Winkler 3-2-1996
 Signature Foltz & Associates, Inc. Date

3908240020