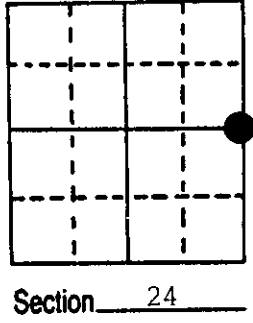


# U.S. PUBLIC LAND SURVEY MONUMENT RECORD

**Note:** This form is intended and designed to fulfill all requirements of Wisconsin Administrative Code, Chapter A-E 5.02, U.S. Public Land Survey Monument Record (3) (a) (b) (c) (d) (e) (f) (g) (h) (i). An additional sheet may be added if necessary to conform with said requirements.

(a) Corner location: Township 39 North  
 Range 8 East/West

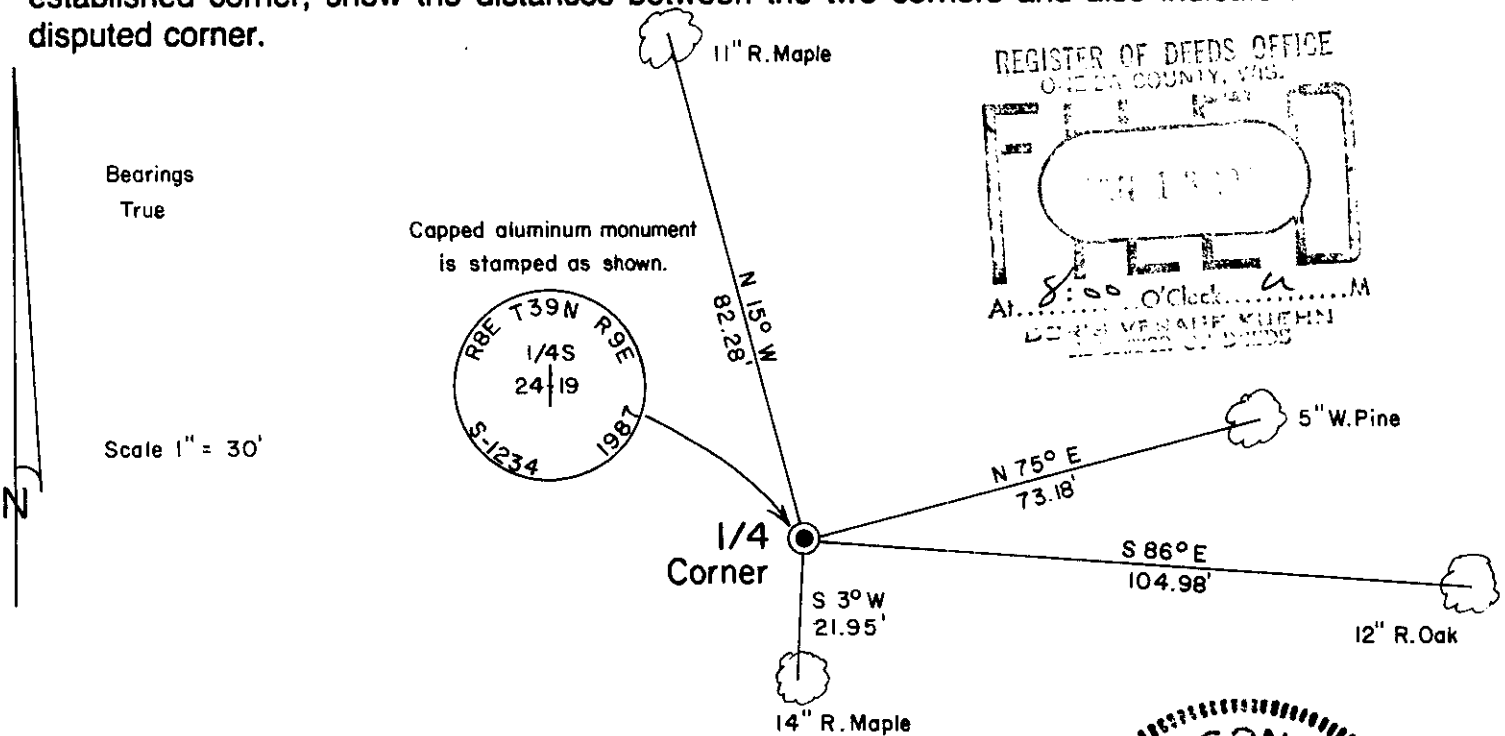
Town/City/Village Newbold  
 County Oneida



(b) (f) (g) (h) Description of monument found at this corner and if it was accepted, state all evidence (material, testimonial, occupational, plats, records, other monuments) used as a basis for accepting. If not accepted or if nothing was found, state evidence used as basis for establishing location. If reestablished through lost corner proportionate methods, indicate all monuments, distances and directions used to establish.

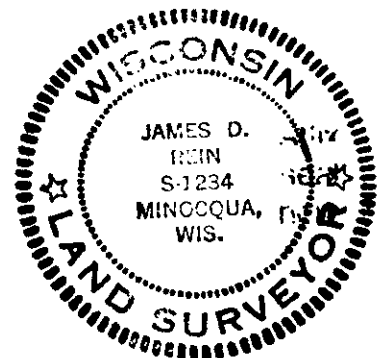
July 1863 - Alexander Anderson, Deputy Surveyor - Set 1/4 Section post. Bearing trees:  
 Birch 8", N47 1/2°W, 19 links and Birch 7" S44°E, 7 links.  
 February 1953 - E. F. Kowalke - Map of survey and notes indicates plain post for 1/4 Corner.  
 December 1977 - F. H. Copp - Survey map shows iron pipe found for 1/4 Corner.  
 March 1987 - James D. Rein, RLS - Found 1" dia. iron pipe and one bearing tree: 14" R. Maple S3°W, 21.95 feet. Replaced 1" dia. iron pipe with a capped 2" dia. flange bottom aluminum monument, stamped to identify corner, and made 3 bearing trees. Measured to an aluminum nail set in center of root crown on side of tree facing corner.

(c) (d) (e) Plan view of corner with ties to at least 4 witness monuments. If in disagreement with previously established corner, show the distances between the two corners and also indicate the ties to the disputed corner.



(i) I, James D. Rein, Registered Land Surveyor No. S-1234  
 (type or print name) certify that the corner location on this record was determined by me or under my direction and control and that this U.S. Public Land Survey Monument Record is correct and complete to the best of my knowledge and belief.

James D. Rein December 26th, 1987  
 Signature Date



Index No. P-25

3908242000

