

U. S. PUBLIC LAND SURVEY MONUMENT RECORD

INSTRUCTIONS : This record shall show the location of the corner and shall include all of the following nine elements (a through i).

- (a) Identify the corner by reference to the U.S. public land survey system.

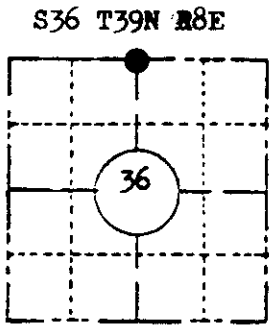
Original government corner, a wood post was established in July 1863, by Alexander Anderson, Government Deputy Surveyor.

Tamarack 5 N76E 73 lks
do 5 S45E 44 lks

Compared with all record data & accepted as correct.

Robert H. Nival

Oneida County Surveyor 27 Apr 1983



LOCATION SKETCH

(Location of landmark indicated by "●")



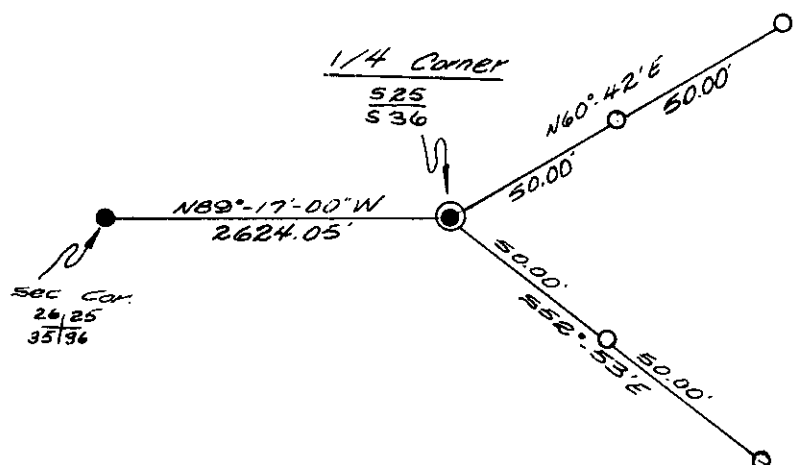
- (b) Describe any record evidence, monument evidence, occupational evidence, testimonial evidence or any other material evidence you considered, and whether the monument was found or placed.

Found WCD brass capped 2" diameter iron pipe in place. Cap stamped to indentify corner. Corner was established in a survey for the American Legion State Forest by Robert L. Ilg, RLS, Wisconsin Conservation Department 1963-64.

- (c) In the plan view drawing below, provide reference ties to at least 4 witness monuments, or, if the location is within a municipality, to at least 2 witness monuments. (Witness monuments shall be made of concrete, natural stone, iron or other equally durable material, Describe witness monuments.

- (d) Show a plan view drawing depicting the relevant monuments and reference ties which is sufficient in detail to enable accurate relocation of the corner monument if the corner monument is disturbed. Indicate north.

○ = Witness monument 2 inch by 60 inch iron pipe protruding 12 inches above swamp level.



1-23

3908250020

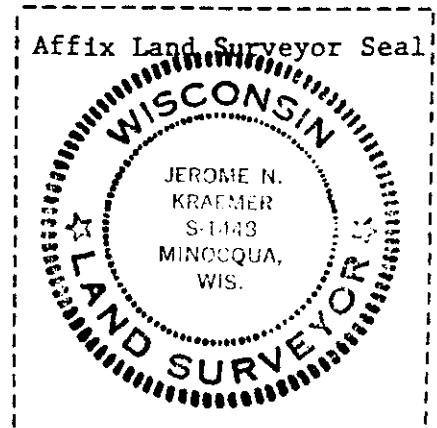
(e) Describe any material discrepancy between the location of the corner as restored or reestablished and the location of that corner as previously restored or reestablished by distance and direction. Show the discrepancy on the plan view drawing under (d), above. Show the distances between the corner as previously restored or reestablished and (1) the corner as restored or reestablished, and (2) to at least 2 of the witness monuments shown on the drawing in (d), above.

(f) Was the corner restored through acceptance of (1) an obliterated evidence location, or, (2) a found perpetuated location?

The corner position was restored by acceptance of a found monumented corner as re-established by Robert L. Ilg, RLS, 1963-64.

(g&h) Was the corner reestablished through lost corner proportionate methods? If so, show the ^{method} including the directions and distances to other public land survey corners used as evidence or used for proportioning in determining the corner location?

REGISTER OF DEEDS OFFICE
ONEIDA COUNTY, WIS.
FILED
MAY 11 1983
At 4:15 O'Clock P M
DORIS VERAGE KUEHN
REGISTER OF DEEDS



(i) I, JEROME N. KRAEMER
(type or print name) certify that the corner location shown on this record was determined by me or under my direction and control and that this U.S. Public Land Survey Monument Record is correct and complete to the best of my knowledge and belief.

Jerome N Kraemer
Signature

December 29, 1982

Date