

Stock No. 26273

U. S. PUBLIC LAND SURVEY DOCUMENT RECORD

INSTRUCTIONS

This record shall show the location of the corner and the include the following items: elements through

Identify the corner by reference to the U.S. Public Land Survey System

Original corner, a wood post was set in July, 1863 by Alexander Anderson, Government Deputy Surveyor.

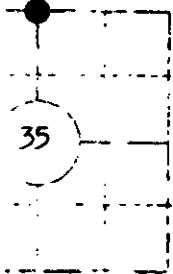
Tamarack 6 S44W 47 lks
do 7 N55W 48 lks

Compared with all record data & accepted as correct.

Robert H. Nival

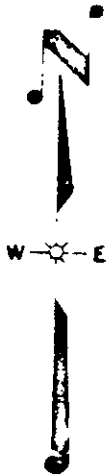
Oneida County Surveyor 27 Apr 1983

S35 T39N R8E



SKETCH

and here indicated



erive any record evidence, including... other material evidence by...

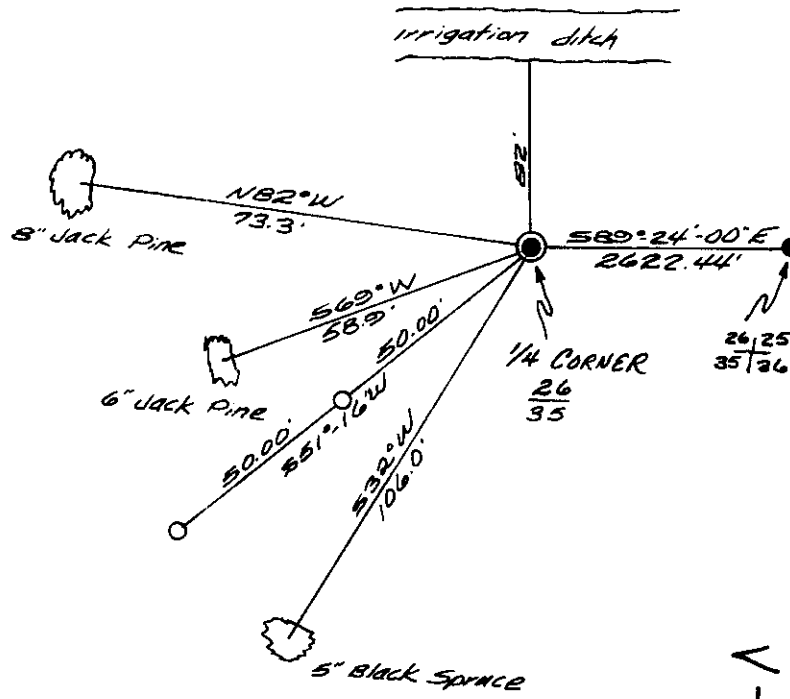
Found WCD brass capped 2 inch diameter iron pipe in place. Cap stamped to identify corner. Corner was established in a survey for the American Legion State Forest by Robert L. Ilg, RLS, Wisconsin Conservation Department 1963-64.

Existing bearing tree: Jack Pine 8" N82°W 73.3 feet;

In the plan view drawing below, provide reference to... monuments... shall be made of concrete, natural stone... Describe witness monuments

For a plan view drawing... monuments and reference trees... indicate north.

- * Witness monument 2 inch by 30 inch well point protruding 12 inches above swamp level.



3908260020

1-19

Describe any material discrepancy between the location of the corner as restored or reestablished and the location of that corner as previously restored or reestablished by distance and direction. Show the discrepancy on the plan view drawing under (d) above. Show the distances between the corner as previously restored or reestablished and (1) the corner as restored or reestablished and (2) to at least 2 of the witness monuments shown on the drawing in (d), above.

Was the corner restored through acceptance of (1) an obliterated evidence location or (2) a found perpetuated location?

The corner position was restored by acceptance of a found monumented corner as re-established by Robert L. Ilg, RLS, 1963-64.

Was the corner reestablished through lost corner procedure or other method, including the directions and distances to other public land survey corners as evidence or used for proportioning in determining the corner location?

REGISTER OF DEEDS OFFICE
ONEIDA COUNTY, WIS.
FILED
MAY 11 1982
At 4:15 O'clock... P.....M
DORIS VERAGE KUEHN
REGISTER OF DEEDS

JEROME N. KRAEMER

I, JEROME N. KRAEMER, certify that the above is a true and correct copy of the original as shown to me by the person presenting the same for recording.

Jerome N. Kraemer

December 29, 1982

