

# U.S. PUBLIC LAND SURVEY MONUMENT RECORD

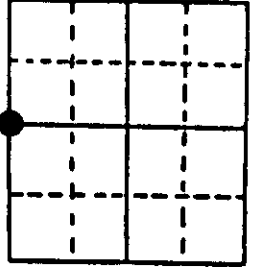
**Note:** This form is intended and designed to fulfill all requirements of Wisconsin Administrative Code, Chapter A-E 7.08 U.S. Public Land Survey Monument Record (3) (a) (b) (c) (d) (e) (f) (g) (h) (i). An additional sheet may be added if necessary to conform with said requirements.

(a) Corner location: Township 39 North Corner: West 1/4 Corner

Section 26 Range 8 East Original Surveyor: A. Anderson

Town/City/Village Newbold Original B.T.'s: 10" Tam S40°E 10 lks  
10" Tam S54°W 43 lks

County Oneida

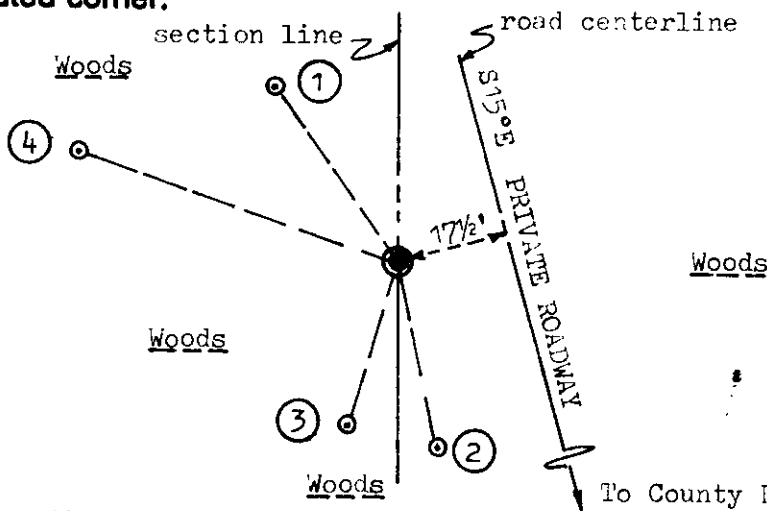


Original Survey Date: July 1863 ● Location

(b) (f) (g) (h) Description of monument found at this corner and if it was accepted, state all evidence (material, testimonial, occupational, plats, records, other monuments) used as a basis for accepting. If not accepted or if nothing was found, state evidence used as basis for establishing location. If reestablished through lost corner proportionate methods, indicate all monuments, distances and directions used to establish. Indicate type of monument found or set and sign post.

Found and accepted a standard 2" dia. iron pipe monument with stamped WCD brass cap at this corner location 12" above grade and plumb. All original GLO survey corner evidence is now obliterated or uncertain. In 1964, Ilg/WCD noted that a standard WCD iron pipe monument was set in place of an old scribed wood post at the corner, and which measured 40.063 chains North of the SW corner and 40.001 chains South of the NW corner of Section 26; noted BTs a 16" Pw S34°W 0.341 chains is now a 22" Pw with upper blaze shut and lower blaze partly open and plain, a 12" Pn N15°E 0.102 chains is now a 15" Pn decayed and tipped 30°+ to SE, and a 13" Tam S82°E 0.879 chains is now same with upper and lower face blazes shut but with plain fissures. Ilg also noted corner fell approximately 16 feet west of centerline of an existing roadway. In 1977, Seymour/DNR found the WCD capped monument OK at corner as well as record BTs noted above, and marked a new BT 8" Bw S23°E 0.303 chains, which is now a 9" Bw with upper and lower face blazes plain. I set a standard white poly 'T' corner marker post 1 foot west of the corner monument and nailed a standard yellow BT plate/tag to face of older SW Pw BT. This recovery completed July 10, 1997; no witnesses.

(c) (d) (e) Plan view of corner with ties to at least 4 witness monuments. If in disagreement with previously established corner, show the distances between the two corners and also indicate the ties to the disputed corner.



**Witness Monument Ties:**

- ① New BT 14" Pw N35°W 33.50'.
- ② New BT 10" Pn S11°E 29.53'.
- ③ New BT 6" Bw S17°W 26.72'.
- ④ New BT 14" Pn N71°W 52.40'.

Unless otherwise indicated, all BT witness monument ties are to a 1/4" dia. by 2.5" long PK nail with 1.25" dia. steel washer set in unblazed right face bark; and a PK nail with 2" dia. steel washer stamped BT also set in unblazed front face bark of each BT at DBH. All previous corner recovery notes from Wisconsin DNR and/or Oneida County survey records.

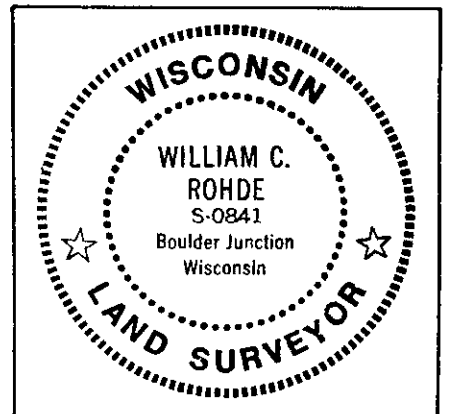


Scale: 1" = 30'

(i) I, William C. Rohde, RLS 841  
(type or print name) certify that the corner location on this record was determined by me or under my direction and control and that this U.S. Public Land Survey Monument Record is correct and complete to the best of my knowledge and belief.

William C. Rohde  
Signature

July 14, 1997  
Date



Index No. 17