

# U.S. PUBLIC LAND SURVEY MONUMENT RECORD

**Note:** This form is intended and designed to fulfill all requirements of Wisconsin Administrative Code, Chapter A-E 7.08 U.S. Public Land Survey Monument Record (3) (a) (b) (c) (d) (e) (f) (g) (h) (i). An additional sheet may be added if necessary to conform with said requirements.

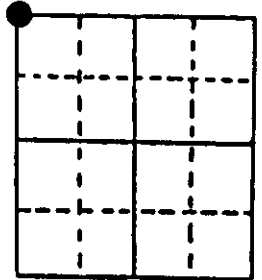
(a) Corner location: Township 39 North Corner: NW Section Corner

Section 34 Range 8 East Original Surveyor: A. Anderson

Town/City/Village Newbold

Original B.T.'s: 8" Pn N16°W 43 lks  
14" Pn N07°E 31 lks

County Oneida

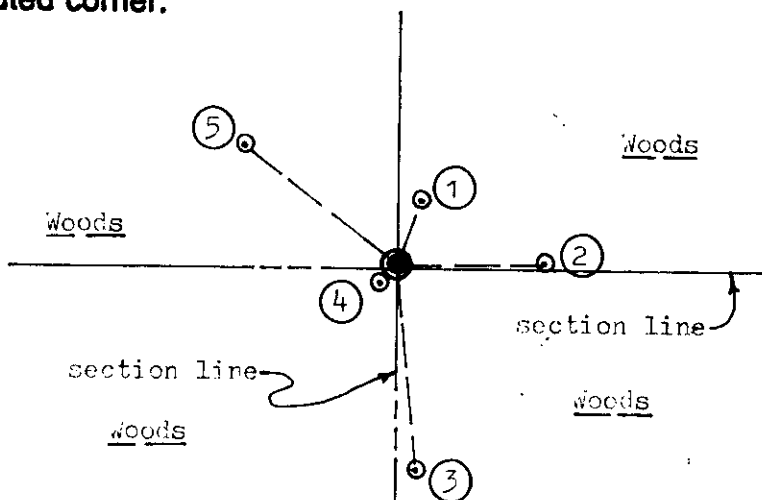


Original Survey Date: July 1863 ● Location

(b) (f) (g) (h) Description of monument found at this corner and if it was accepted, state all evidence (material, testimonial, occupational, plats, records, other monuments) used as a basis for accepting. If not accepted or if nothing was found, state evidence used as basis for establishing location. If reestablished through lost corner proportionate methods, indicate all monuments, distances and directions used to establish. Indicate type of monument found or set and sign post.

Found and accepted a 6" dia. concrete monument with a 3/4" by 4" copper plate imbedded in top and flush with existing grade; unmarked, I set a 1/4" dia. by 2 1/2" long PK concrete nail in center top of the concrete monument as a tie point. Also found an old 2" dia. iron pipe monument, similar to previously found iron pipe monuments set by WIC in 1938, along the North face of the concrete monument, with uncapped top 26" above grade; and an old 4" sq. wood post with axed faces about 6" SE of the concrete monument. I left all in place as record corner evidence, which was approved after a phone query to Oneida County Surveyor Michael Romportl. All GLO original survey corner evidence is now obliterated. In 1964, ILG of WCD found and noted the same post at this corner at 4.73 chains West of a north/south woods road; and he noted new BTs: a 10" Pn N89°E 0.462 chains, now an 18" Pn I found with lower face fissure plain and a standard WCD aluminum section locator plate nailed to upper face and noted by K.F. McLellan in 1950, and which I used for new ties below; and a 16" Pn S58°W 1.197 chains is now a 24" Pn with lower blaze shut but plain. I set a standard white poly 'T' corner marker post 1' West of the concrete corner monument. This corner recovery completed December 11, 1997; there were no witnesses present.

(c) (d) (e) Plan view of corner with ties to at least 4 witness monuments. If in disagreement with previously established corner, show the distances between the two corners and also indicate the ties to the disputed corner.



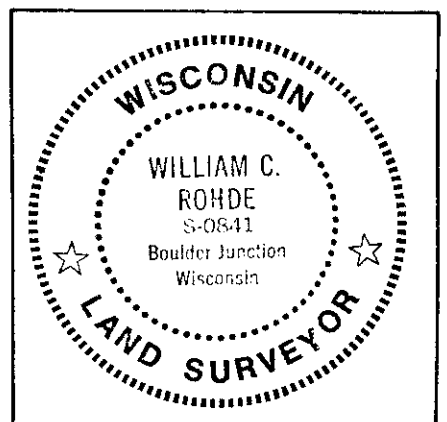
**Witness Monument Ties:**

- ① New BT 11" Pn N22°E 13.75'.
- ② Record BT 18" Pn N89°E 30.65'.
- ③ New BT 13" Pn S05°E 43.25'.
- ④ New BT 12" Pn S50°W 5.00'.
- ⑤ New BT 8" Pn N52°W 40.48'.

Unless otherwise indicated, all BT witness monument ties are to a 1/4" dia. by 2.5" long PK nail with 1.25" dia. steel washer set in unblazed right face bark; and a PK nail with 2" dia. steel washer stamped BT also set in unblazed front face bark of each BT at DBH. All previous corner recovery notes from Wisconsin DNR and/or Oneida County survey records.



Scale: 1" = 40'



(i) I, William C. Rohde, RLS 841  
(type or print name) certify that the corner location on this record was determined by me or under my direction and control and that this U.S. Public Land Survey Monument Record is correct and complete to the best of my knowledge and belief.

William C. Rohde  
Signature

Dec. 21, 1997  
Date

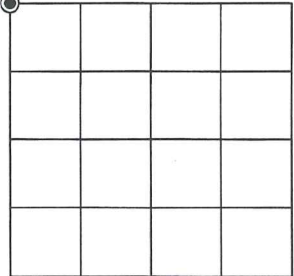
## U.S. PUBLIC LAND SURVEY MONUMENT RECORD ADDENDUM

Note: This form is intended and designed to fulfill all requirements of the Wisconsin Administrative Code, Chapter A-E 7.08 U.S. Public Land Monument Record (3)(a)(b)(c)(d)(e)(f)(g)(h)(i). An additional sheet may be added if necessary to conform with said requirements.

(a) CORNER LOCATION: WISCRS - Oneida County  
 Northwest corner of Section 34 North: 235,763.31 USft  
 Township 39 North East: 244,406.66 USft  
 Range 8 East Datum: NAD 83(2011) *ep.* 2010.00  
 Town of Newbold GNSS Method: RTN - Direct  
 County of Oneida GNSS Control: WISCORS VRS

(RECORDING AREA)

SECTION 34



(b) HISTORY OF ORIGINAL CORNER ESTABLISHMENT

Original Surveyor:  
 Date of Survey: Commenced  
 Completed  
 Original B.T.'S

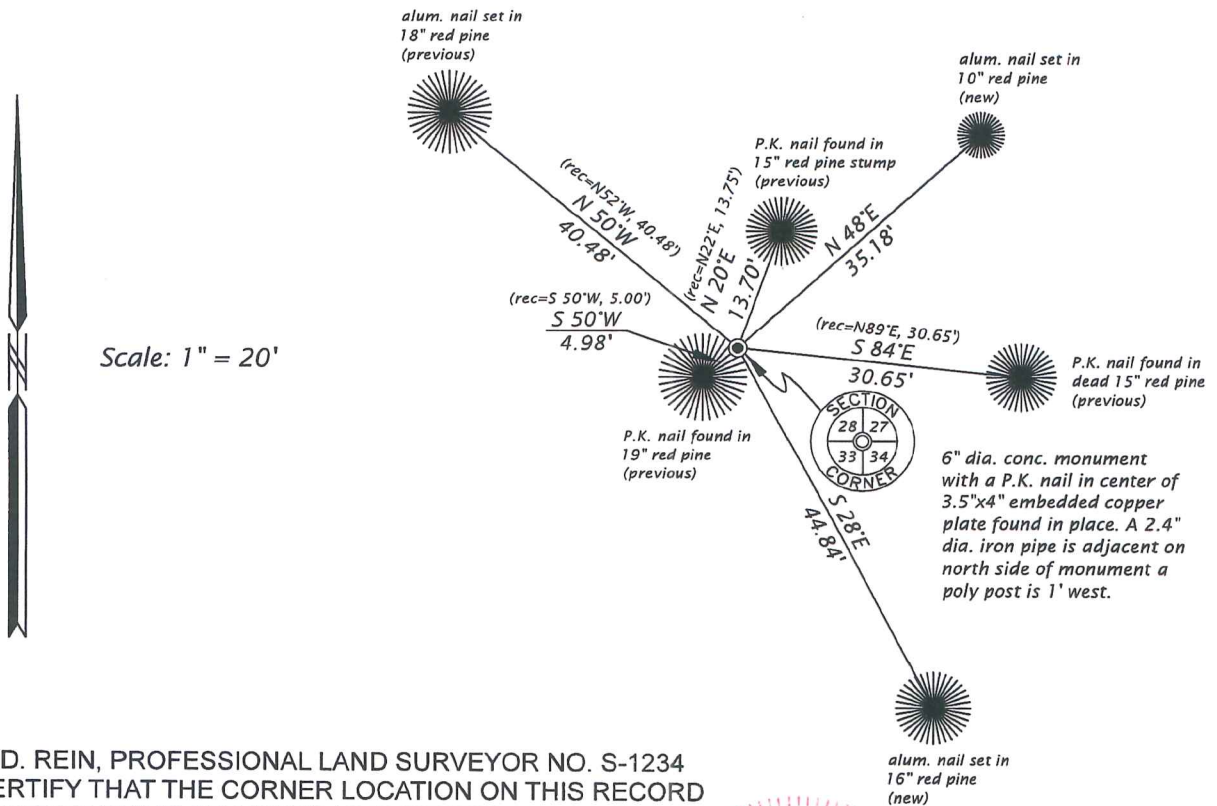
SEE PREVIOUS U.S.P.L.S. MONUMENT  
RECORD DATED DECEMBER 21, 1997

(f)(g)(h) DESCRIPTION OF MONUMENT FOUND AT THIS CORNER AND IF IT WAS ACCEPTED, STATE ALL EVIDENCE (MATERIAL, TESTIMONIAL, OCCUPATIONAL, PLATS, RECORD, OTHER MONUMENTS) USED AS A BASIS FOR ESTABLISHING LOCATION. IF NOT ACCEPTED OR IF NOTHING WAS FOUND, STATE EVIDENCE USED AS BASIS FOR ESTABLISHING LOCATION. IF REESTABLISHED THROUGH LOST CORNER PROPORTIONATE METHODS, INDICATE ALL MONUMENTS, DISTANCES AND DIRECTIONS USED TO ESTABLISH. INDICATE TYPE OF MONUMENT AND SIGN POST FOUND OR SET.

This is a perpetuation of a previous U.S.P.L.S. Monument Record by William C. Rohde, RLS-0841, dated December 21, 1997, and filed in the office of the Oneida County Register of Deeds. A complete history of the corner can be found on the previous monument record. I accept the previous location as a true and faithful perpetuation or reestablishment of the original corner location and further perpetuate it as follows.

April 24, 2024, James D. Rein, PLS No. S-1234, we found and I accepted the 6" dia. concrete monument with a P.K. nail in the center of a 3.5" x 4" embedded copper plate. We further perpetuate it as shown in the plan. Three of Rhode's bearing trees are now dead, or gone. See below for 2 additional bearing trees and updated ties to the recovered references.

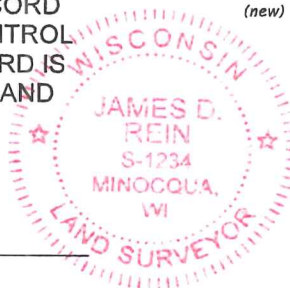
(c)(d)(e) PLAN VIEW OF CORNER WITH TIES TO AT LEAST 4 WITNESS MONUMENTS. IF IN DISAGREEMENT WITH PREVIOUSLY ESTABLISHED CORNER, SHOW THE DISTANCE BETWEEN THE TWO CORNERS AND ALSO INDICATE THE TIES TO THE DISPUTED CORNER.



(i) I, JAMES D. REIN, PROFESSIONAL LAND SURVEYOR NO. S-1234 HEREBY CERTIFY THAT THE CORNER LOCATION ON THIS RECORD WAS DETERMINED BY ME OR UNDER MY DIRECTION AND CONTROL AND THAT THIS U.S. PUBLIC LAND SURVEY MONUMENT RECORD IS CORRECT AND COMPLETE TO THE BEST OF MY KNOWLEDGE AND BELIEF.

*James D. Rein*  
 SIGNATURE

6/15/24  
 DATE



INDEX NO. V - 13  
 3908280000