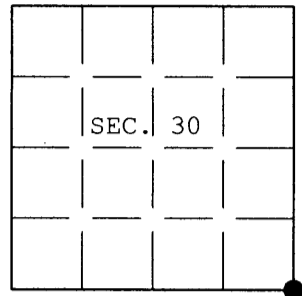


U.S. PUBLIC LAND SURVEY MONUMENT RECORD

Note: This form is intended and designed to fulfill all requirements of Wisconsin Administrative Code, Chapter A-E 7.08 U.S. Public Land Survey Monument Record (3) (a) (b) (c) (d) (e) (f) (g) (h) (i). An additional sheet may be added if necessary to conform with said requirements.

(a) CORNER LOCATION: Plane Coordinates
 Cor. of Secs. 29, 30, 31 & 32 X:
 Township 39 North Y:
 Range 8 East of the 4th P.M. Datum:
 Town of Newbold County of Oneida



(b) HISTORY OF ORIGINAL CORNER ESTABLISHMENT

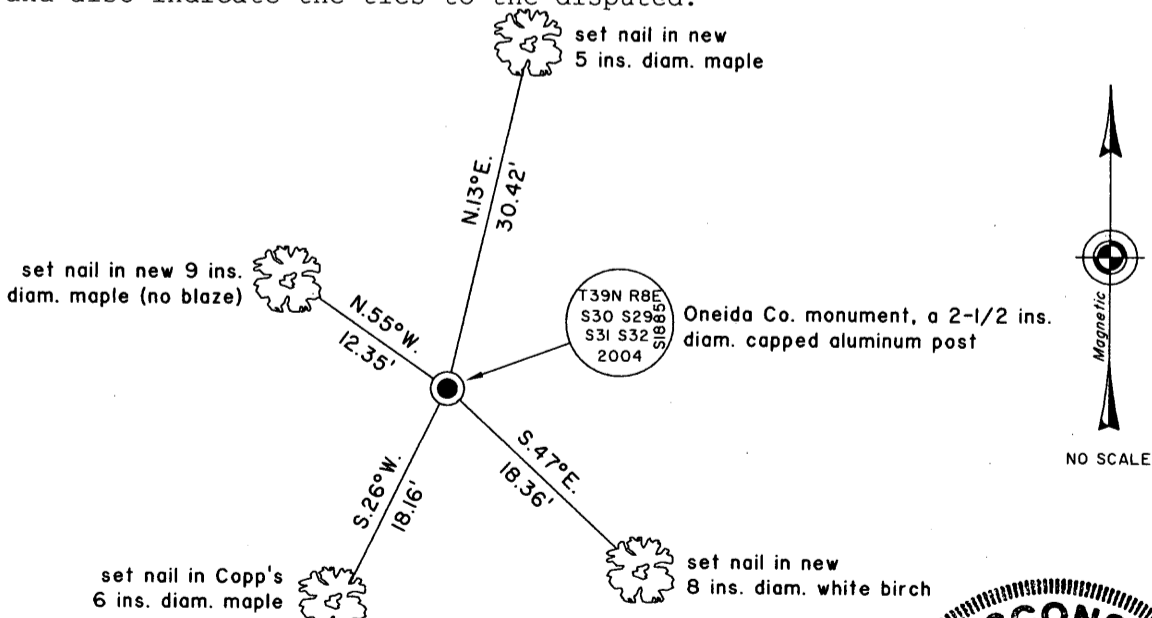
Original Surveyor: Anderson, Alexander Original Accessories:
 Date of Survey: Commenced July 1863 yellow pine 6" N.72°E., 10 lks.
 Completed July 1863 yellow pine 6" N.25°W., 18 lks.

(b) (f) (g) (h) Description of monument found at this corner and if it was accepted, state all evidence (material, testimonial, occupational, plats, records, other monuments) used as a basis for accepting. If not accepted or if nothing was found, state evidence used as basis for establishing location. If re-established through lost corner proportionate methods, indicate all monuments, distances and directions used to establish. Indicate type of monument and sign post found or set.

24 May 1977: OCS# C-357 by Fred H. Copp of the Wisconsin Dept. of Natural Resources. 2" IP. White pine stp. N.72°E., 6.9 ft. and a maple 5" S.26°W., 16.2 ft.

15 May 2004: I found and accepted Copp's monument, a 48 ins. long, 2-1/2 ins. diam. iron pipe witnessed by a scribed pine stump bearing S.82°E., 6.9 ft. dist. I replaced the pipe with an aluminum post, 30 ins. long, 2-1/2 ins. diam., with Oneida County aluminum cap projecting 4 ins. above the ground and mkd. as shown below. I found or established accessories as shown below and set a white plastic sign post bearing Northeast, 1 ft. dist.

(c) (d) (e) Plan view of corner with ties to at least 4 witness monuments. If in disagreement with previously established corner, show the distances between the two corners and also indicate the ties to the disputed.



(i) I, Jeffrey W. Austin, Registered Land Surveyor No. S-1885, hereby certify upon honor that the corner location on this record was determined by me or under my direction and control and that this U.S. Public Land Survey Monument Record is correct and complete to the best of my knowledge and belief.

Signature _____ Date 30 JAN 2005



3908300000