

U.S. PUBLIC LAND SURVEY MONUMENT RECORD

Note: This form is intended and designed to fulfill all requirements of Wisconsin Administrative Code, Chapter A-E 7.08 U.S. Public Land Survey Monument Record (3) (a) (b) (c) (d) (e) (f) (g) (h) (i). An additional sheet may be added if necessary to conform with said requirements.

(a) Corner location: Township 39 North Corner: North 1/4 Corner

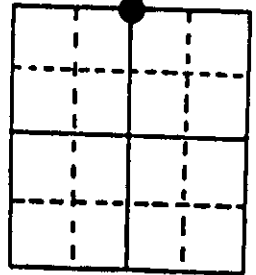
Section 31 Range 8 East Original Surveyor: A. Anderson

Town/City/Village Newbold

Original B.T.'s: 6" Tam S65°E 6 lks
7" Tam N60°W 2 lks

Note: Std white poly 'T' post set 1' East of corner.

County Oneida

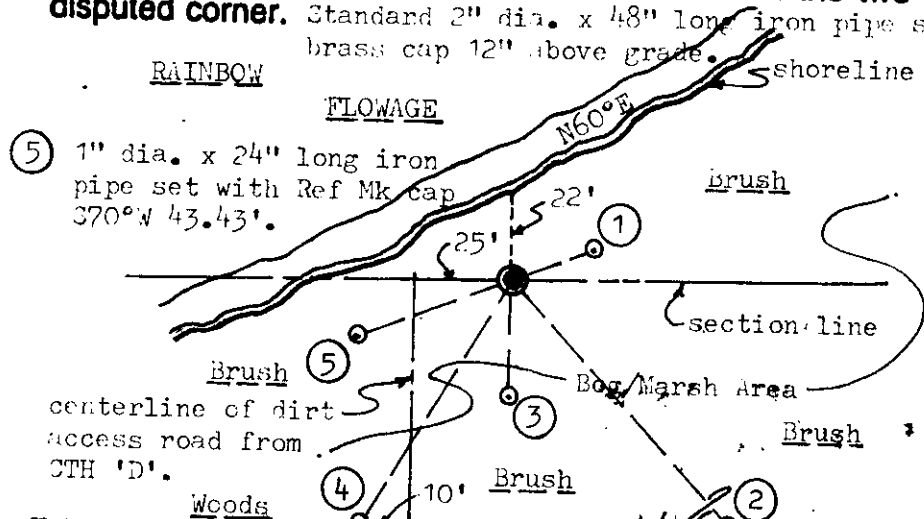


Original Survey Date: July 1863 ● Location

(b) (f) (g) (h) Description of monument found at this corner and if it was accepted, state all evidence (material, testimonial, occupational, plats, records, other monuments) used as a basis for accepting. If not accepted or if nothing was found, state evidence used as basis for establishing location. If reestablished through lost corner proportionate methods, indicate all monuments, distances and directions used to establish. Indicate type of monument found or set and sign post.

An extensive search and examination of corner location area revealed no original GLO survey corner post or BT evidence, nor the 2" dia. iron pipe monument at corner by Wisconsin Valley Improvement Company in 1938. However, I did recover the 1938 WVIC 28" Pw BT S42°E 1.679 ch, as a 4' high stump in fair condition with lower face blaze and scribing open and plain. I could not recover the 1938 WVIC In stump BT N07°W 0.633 ch as it falls in existing flowage 20 feet from shoreline, and is undoubtedly now gone or of unreliable reference after 65 years or more of decaying and lake ice and shoreline erosion actions. I therefore reestablished the corner location from the found SE 1938 WVIC BT stump remains with adjusted compass readings and tape measurements. In 1938, WVIC notes indicate the corner at 39.705 chains (2620.5') from the NE corner of Section 31 and 39.205 chains (2587.5') from NW corner of Section 31. During my recovery of this corner, Genisot & Associates of Rhinelander, Wisconsin accepted my corner position reestablished from the 1938 WVIC BT stump, for their subdivision survey of Section 30, and according to their Drawing No. 9756-2 dated 8/11/97, they determined the reestablished corner to be N89°56'23"W 2586.65' to the NW section corner and S89°59'35"E 2621.44' to the NE corner of Section 31. Therefore, upon consultation with the Oneida County Surveyor and Genisot & Associates, it is our opinion that the corner has been reestablished within acceptable limits or standards. This recovery completed August 13, 1997.

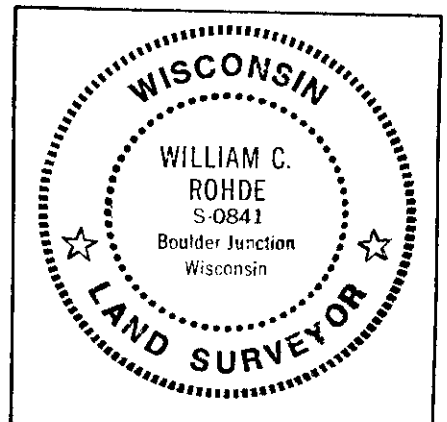
(c) (d) (e) Plan view of corner with ties to at least 4 witness monuments. If in disagreement with previously established corner, show the distances between the two corners and also indicate the ties to the disputed corner. Standard 2" dia. x 48" long iron pipe set at reestablished corner with stamped brass cap 12" above grade.



- Witness Monument Ties:**
- ① 1" dia. x 24" long iron pipe set with Ref Mk cap N67°E 22.67'; 1' SW of clump of 6 small Mr.
 - ② 1938 WVIC BT stump found, 4ft high in fair condition with a plain scribed lower face blaze, S42°E 110.8'.
 - ③ 1" dia. x 24" long iron pipe set with Ref Mk cap South 30.44' and 1' North of 4 small Mr (bush).
 - ④ New BT 6" Elm S30°W 76.86'; Std Oneida Co. DND plate on East face.

Unless otherwise indicated, all BT witness monument ties are to a 1/4" dia. by 2.5" long PK nail with 1.25" dia. steel washer set in unblazed right face bark; and a PK nail with 2" dia. steel washer stamped BT also set in unblazed front face bark of each BT at DBH. All previous corner recovery notes from Wisconsin DNR and/or Oneida County survey records.

Scale: 1" = 50'



(i) I, William C. Rohde, RLS 841
(type or print name) certify that the corner location on this record was determined by me or under my direction and control and that this U.S. Public Land Survey Monument Record is correct and complete to the best of my knowledge and belief.

William C. Rohde
Signature

August 24, 1997
Date

U.S. PUBLIC LAND SURVEY MONUMENT RECORD

REGISTER OF DEEDS OFFICE
ONEIDA COUNTY
FILED

JUL 19 2021

Note: This form is intended and designed to fulfill all requirements of the Wisconsin Administrative Code, Chapter A-E 7.08 U.S. Public Land Monument Record (3)(a)(b)(c)(d)(e)(f)(g)(h)(i). An additional sheet may be added if necessary to conform with said requirements.

KYLE J. FRANSON
REGISTER OF DEEDS

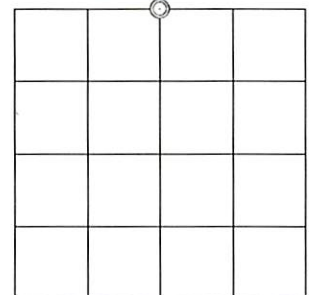
(a) CORNER LOCATION:

North Quarter Corner of Section 31
Township 39 North
Range 8 East
Town of Newbold
County of Oneida

North:
East:
Datum:
GNSS Method:
GNSS Control:

(RECORDING AREA)

SECTION 31



(b) HISTORY OF ORIGINAL CORNER ESTABLISHMENT

Original Surveyor: Alexander Anderson
Date of Survey: Commenced July 22, 1863
Completed July 31, 1863
Original B.T.'S: Tamarack, 6", S 65°E, 6 lks.
Tamarack, 7", N 60°W, 2 lks.

(f)(g)(h) DESCRIPTION OF MONUMENT FOUND AT THIS CORNER AND IF IT WAS ACCEPTED, STATE ALL EVIDENCE (MATERIAL, TESTIMONIAL, OCCUPATIONAL, PLATS, RECORD, OTHER MONUMENTS) USED AS A BASIS FOR ESTABLISHING LOCATION. IF NOT ACCEPTED OR IF NOTHING WAS FOUND, STATE EVIDENCE USED AS BASIS FOR ESTABLISHING LOCATION. IF REESTABLISHED THROUGH LOST CORNER PROPORTIONATE METHODS, INDICATE ALL MONUMENTS, DISTANCES AND DIRECTIONS USED TO ESTABLISH. INDICATE TYPE OF MONUMENT AND SIGN POST FOUND OR SET.

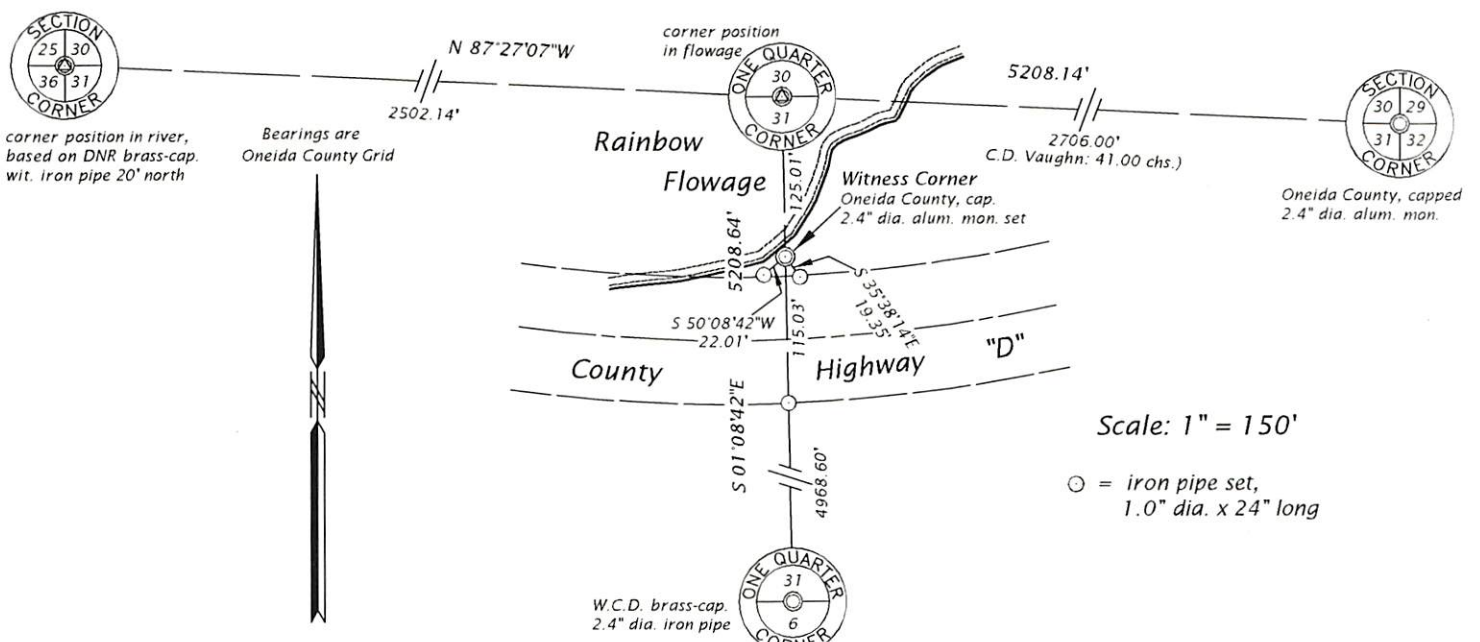
Circa 1924 - C. D. Vaughn, Oneida County Surveyor: Field Book #38, page 51; At the northeast corner of Section 31, ran W. Var. 3° E, 41.00 chains, fell 480 links So. of ¼ Post: W. Pine stp. 16", N50°E, 74 links and a Cedar 12", S48°W, 54 links.

1938 - Wisconsin Valley Improvement Co. determined this corner lost and set 2" dia. iron pipe at proportionate distance of 39.705 chains (2620.5 feet) west of the northeast corner of Section 31, referenced by a W. Pine 28" S42°E, 110.8 feet and by a N. Pine Stump, S7°30'W, 41.8 feet.

August 24, 1997 - William C. Rhode, RLS No. 841: Found the corner monument set by WVIC had been obliterated. He re-established the corner position based on the recovered 1938 WVIC White Pine, now a stump, bearing tree with a stamped brass cap 2" dia. x 48" long iron pipe and made reference ties as shown on his U.S. Public Land Survey Monument Record dated Aug. 24, 1997.

CONTINUED ON REVERSE PAGE:

(c)(d)(e) PLAN VIEW OF CORNER WITH TIES TO AT LEAST 4 WITNESS MONUMENTS. IF IN DISAGREEMENT WITH PREVIOUSLY ESTABLISHED CORNER, SHOW THE DISTANCE BETWEEN THE TWO CORNERS AND ALSO INDICATE THE TIES TO THE DISPUTED CORNER.



(i) I, JAMES D. REIN, PROFESSIONAL LAND SURVEYOR NO. S-1234 HEREBY CERTIFY THAT THE CORNER LOCATION ON THIS RECORD WAS DETERMINED BY ME OR UNDER MY DIRECTION AND CONTROL AND THAT THIS U.S. PUBLIC LAND SURVEY MONUMENT RECORD IS CORRECT AND COMPLETE TO THE BEST OF MY KNOWLEDGE AND BELIEF.

James D. Rein
SIGNATURE
6/11/21
DATE



V-3
INDEX NO. V-30
3908300020

CONTINUED FROM REVERSE SIDE:

April 2, 2021 - James D. Rein, PLS No. 1234: We find that Rhode's monument marking the corner has been lost to erosion. It is my opinion that WVIC erred when they determined the corner lost in 1938, and should have instead considered the corner position obliterated, based on the 1924, Vaughn record 41.00 chain measurement tie to the northeast corner of Section 31. This record position is harmonious with occupation evidence along the quarter line and also supported by the November 9, 1937, aerial photo B-6-88, available online with the State Cartographer's Office. I re-establish the corner position at Vaughn's record distance and on a line between the section corners. The corner position is located in the Rainbow reservoir, thus we placed a witness monument on the quarter line 125.01 feet south of the corner, with reference ties as shown on the plan. The WVIC proportionate corner position, as re-established by surveyor Rhode bears S 86°02'-23E, 84.69 feet.



WILDERNESS SURVEYING, INC.

Post Office Box 1111
8793 Earls Court
Minocqua, Wisconsin 54548
Telephone (715) 356-5100
Fax (715) 356-1330

James D. Rein
Professional Land Surveyor
No. 1234
James L. Rein
Professional Land Surveyor
No. 2335

March 26, 2022

Michael Romportl
Oneida County Land Records
Box 400
Rhinelander, WI 54501

Re: North 1/4 Corner, Section 31, T39N, R8E


Mike,

Enclosed find a memo from Jay Dick, Technology and Lands Coordinator, with Wisconsin Valley Improvement Company, stating that company is in agreement with positioning the quarter corner as shown on my monument record, dated June 11, 2021. Prior to me finalizing the position, I shared my findings with Jay Dick, PLS No. 2830.

In order to help avoid any confusion in the future, I would much appreciate if this endorsement could be attached, or referenced to my monument record.

Thank you.

Sincerely yours,
WILDERNESS SURVEYING, INC.


James D. Rein
PLS No. 1234

Enclosure



2301 NORTH THIRD STREET WAUSAU, WISCONSIN 54403
715/848-2976 FAX: 715/842-0284
Web Site: www.wvic.com Email: staff@wvic.com

July 13, 2021

RE: N 1/4 Corner of Section 31, Township 39 North, Range 8 East, Town of Newbold, Oneida County, Wisconsin

To whom it may concern,

Wisconsin Valley Improvement Company (WVIC) is in agreement with James D. Rein, PLS No. 1234, in his April 2, 2021, determination that in 1938 WVIC erred in the proportioned placement of the North Quarter Corner of Section 31, Township 39 North, Range 8 East, Town of Newbold, Oneida County, Wisconsin; that WVIC should have taken into account the 1924 corner position noted as found and measured to by C.D. Vaughn, Oneida County Surveyor; that the correct position for reestablishing said corner is a measurement of 41.00 chains west from the northeast section corner of said section; and that the position established by James D. Rein should be recognized as the true position for said corner.

Jonathan Dick, PLS No. 2830
Wisconsin Valley Improvement Company
Technology and Lands Coordinator