

U.S. PUBLIC LAND SURVEY MONUMENT RECORD

Note: This form is intended and designed to fulfill all requirements of Wisconsin Administrative Code, Chapter A-E 7.08 U.S. Public Land Survey Monument Record (3) (a) (b) (c) (d) (e) (f) (g) (h) (i). An additional sheet may be added if necessary to conform with said requirements.

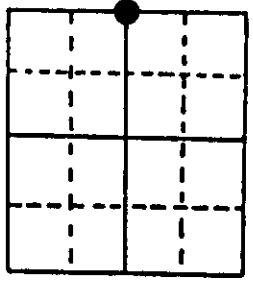
(a) Corner location: Township 38 North Corner: North 1/4

Section 6 Range 8 East Original Surveyor: Alfred Millard

Town/City/Village Newbold

Original B.T.'s: 7" Bw N19°W 33 lks
6" Bw S40°E 14 lks

County Oneida



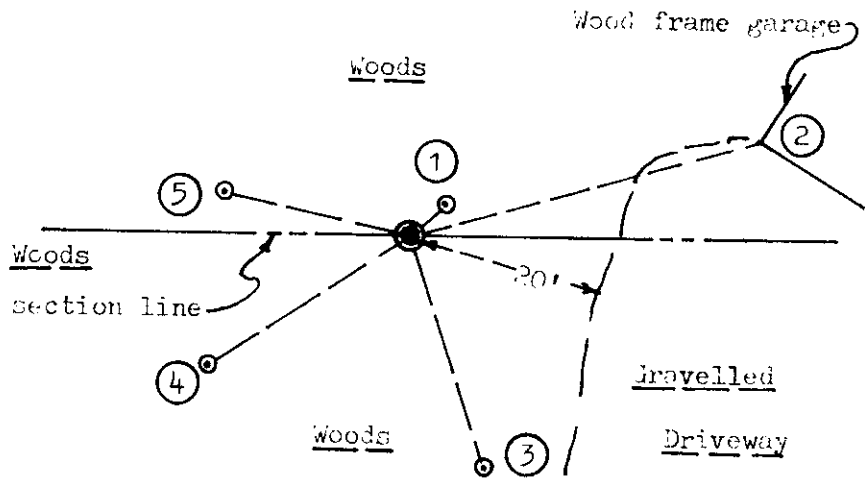
Original Survey Date: September 1860 ● Location

(b) (f) (g) (h) Description of monument found at this corner and if it was accepted, state all evidence (material, testimonial, occupational, plats, records, other monuments) used as a basis for accepting. If not accepted or if nothing was found, state evidence used as basis for establishing location. If reestablished through lost corner proportionate methods, indicate all monuments, distances and directions used to establish. Indicate type of monument found or set and sign post.

Found and accepted a standard 2" dia. iron pipe monument at this corner location with a stamped WCD brass cap 30" above existing grade. I could not lower the monument without a great deal of rock excavation and rooting removal, so I replumbed the monument for ties and erected a cairn of several nearby rocks to stabilize at base. All original GLO corner post and BT evidence is now obliterated. In 1958, Berndt/WCD set the WCD capped iron pipe monument by proportion at 38.747 chains East of the NW section corner and 40.050 chains West of the NE section corner; no CBTs noted but marked new BTs 7" Bw S52°E 0.530 chains, now gone; a 4" Ms S64°W 0.275 chains, now a tall dead stub with lower face blaze shut but plain; a 9" Aspen N20°W 0.065 chains, now a rotted low stump; and a 4' x 5' boulder S09°E 0.560 chains is still there but with no apparent markings. I set a standard white poly 'T' corner marker post 10" West of the corner monument. This recovery completed October 28th 1997; there were no witnesses.

Corner located in rear yard area at Fire No. 7305 Virgin Acres Road.

(c) (d) (e) Plan view of corner with ties to at least 4 witness monuments. If in disagreement with previously established corner, show the distances between the two corners and also indicate the ties to the disputed corner.

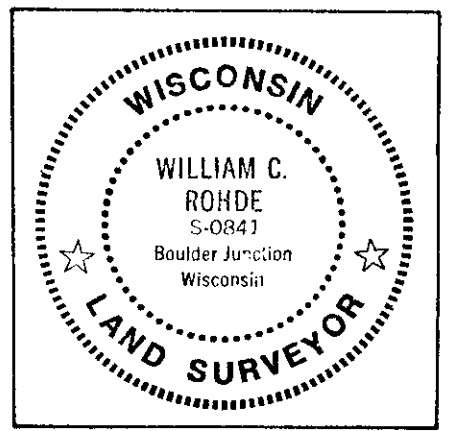


Witness Monument Ties:

- ① low BT 4" Ms N45°E 4.93'.
- ② SW Corner of wood frame garage at grade, N75°E at 37.7'.
- ③ New BT South 8" Ms trunk of a double Ms S17°E 25.50'.
- ④ New BT West 6" Ms trunk of a triple Ms S59°W 25.06'.
- ⑤ New BT N76°W 20.55' to 9" Ms.

Unless otherwise indicated, all BT witness monument ties are to a 1/4" dia. by 2.5" long PK nail with 1.25" dia. steel washer set in unblazed right face bark; and a PK nail with 2" dia. steel washer stamped BT also set in unblazed front face bark of each BT at DBH. All previous corner recovery notes from Wisconsin DNR and/or Oneida County survey records.

Scale: 1" = 20'



(i) I, William C. Rohde, RLS 841
(type or print name) certify that the corner location on this record was determined by me or under my direction and control and that this U.S. Public Land Survey Monument Record is correct and complete to the best of my knowledge and belief.

William C. Rohde
Signature

Nov. 09, 1997
Date

3908310020

Index No. A-3

U.S. PUBLIC LAND SURVEY MONUMENT RECORD

REGISTER OF DEEDS OFFICE
ONEIDA COUNTY
FILED

JUL 19 2021

Note: This form is intended and designed to fulfill all requirements of the Wisconsin Administrative Code, Chapter A-E 7.08 U.S. Public Land Monument Record (3)(a)(b)(c)(d)(e)(f)(g)(h)(i). An additional sheet may be added if necessary to conform with said requirements.

KYLE J. FRANSON
REGISTER OF DEEDS

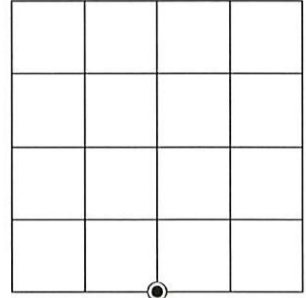
(a) CORNER LOCATION:

South Quarter Corner of Section 31
Township 39 North
Range 8 East
Town of Newbold
County of Oneida

North:
East:
Datum:
GNSS Method:
GNSS Control:

(RECORDING AREA)

SECTION 31



(b) HISTORY OF ORIGINAL CORNER ESTABLISHMENT

Original Surveyor:
Date of Survey: Commenced
Completed
Original B.T.'S

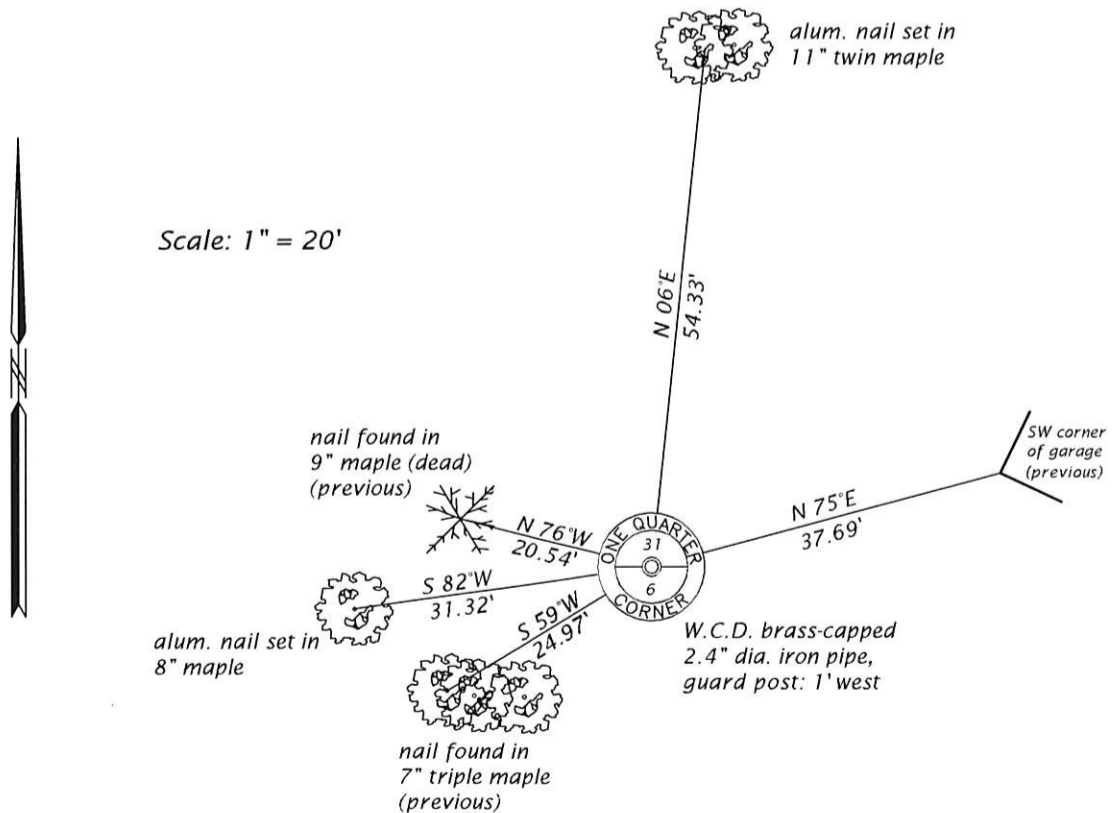
SEE PREVIOUS U.S.P.L.S. MONUMENT
RECORD DATED NOVEMBER 09, 1997.

(f)(g)(h) DESCRIPTION OF MONUMENT FOUND AT THIS CORNER AND IF IT WAS ACCEPTED, STATE ALL EVIDENCE (MATERIAL, TESTIMONIAL, OCCUPATIONAL, PLATS, RECORD, OTHER MONUMENTS) USED AS A BASIS FOR ESTABLISHING LOCATION. IF NOT ACCEPTED OR IF NOTHING WAS FOUND, STATE EVIDENCE USED AS BASIS FOR ESTABLISHING LOCATION. IF REESTABLISHED THROUGH LOST CORNER PROPORTIONATE METHODS, INDICATE ALL MONUMENTS, DISTANCES AND DIRECTIONS USED TO ESTABLISH. INDICATE TYPE OF MONUMENT AND SIGN POST FOUND OR SET.

This is a perpetuation of a previous U.S.P.L.S. Monument Record by William C. Rohde, RLS, dated November 09, 1997, and filed in the office of the Oneida County Register of Deeds. A complete history of the corner can be found on the previous monument record. I accept the previous location as a true and faithful perpetuation or reestablishment of the original corner location and further perpetuate it as follows.

August 20, 2019, James D. Rein, P.L.S. No. S-1234, we found and I accepted the W.C.D. brass-capped iron pipe shown on the previous monument record by Rohde. Several of the record bearing trees are now gone or dead - see below for updated witnesses.

(c)(d)(e) PLAN VIEW OF CORNER WITH TIES TO AT LEAST 4 WITNESS MONUMENTS. IF IN DISAGREEMENT WITH PREVIOUSLY ESTABLISHED CORNER, SHOW THE DISTANCE BETWEEN THE TWO CORNERS AND ALSO INDICATE THE TIES TO THE DISPUTED CORNER.



(i) I, JAMES D. REIN, PROFESSIONAL LAND SURVEYOR NO. S-1234 HEREBY CERTIFY THAT THE CORNER LOCATION ON THIS RECORD WAS DETERMINED BY ME OR UNDER MY DIRECTION AND CONTROL AND THAT THIS U.S. PUBLIC LAND SURVEY MONUMENT RECORD IS CORRECT AND COMPLETE TO THE BEST OF MY KNOWLEDGE AND BELIEF.



James D. Rein 6/11/21
SIGNATURE DATE

INDEX NO. Z - 3
3908310020