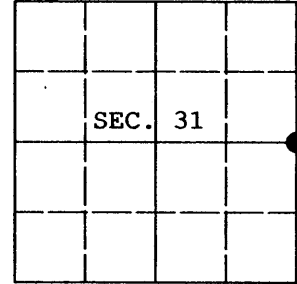


**U.S. PUBLIC LAND SURVEY MONUMENT RECORD**

Note: This form is intended and designed to be used in conjunction with the requirements of Wisconsin Administrative Code, Chapter A-E 7.08 U.S. Public Land Survey Monument Record (3) (a) (b) (c) (d) (e) (f) (g) (h) (i). An additional sheet may be added if necessary to conform with said requirements.

(a) CORNER LOCATION: Plane Coordinates  
 1/4 Cor. of Secs. 31 & 32 X:  
 Township 39 North Y:  
 Range 8 East of the 4th P.M. Datum:  
 Town of Newbold County of Oneida



(b) HISTORY OF ORIGINAL CORNER ESTABLISHMENT

Original Surveyor: Alexander Anderson Original Accessories:  
 Date of Survey: Commenced July, 1863 Birch 10" N.45°E., 9 lks.  
 Completed July, 1863 Birch 5" N.17°W., 10 lks.

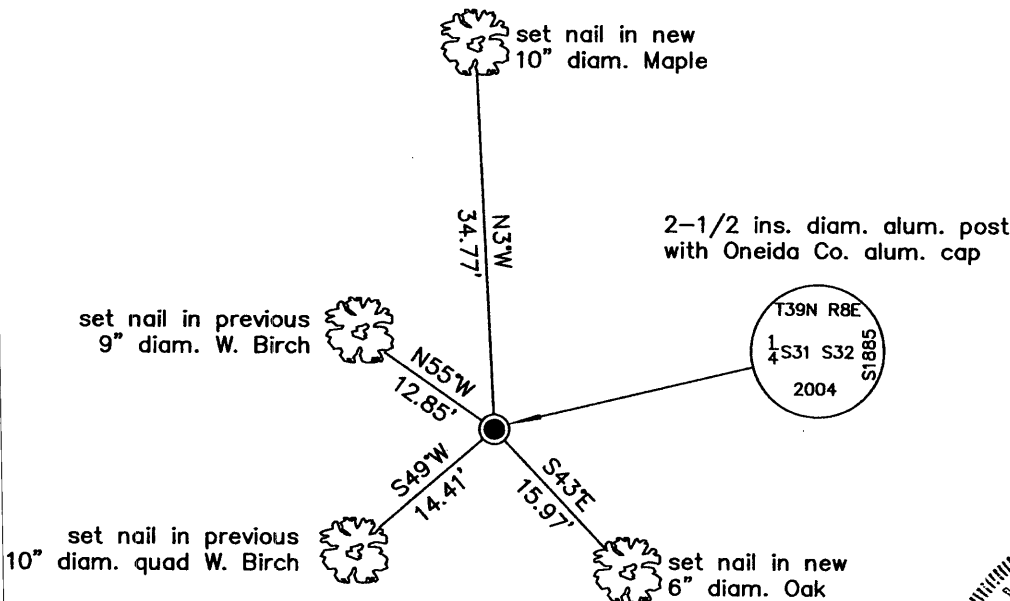
(b) (f) (g) (h) Description of monument found at this corner and if it was accepted, state all evidence (material, testimonial, occupational, plats, records, other monuments) used as a basis for accepting. If not accepted or if nothing was found, state evidence used as basis for establishing location. If re-established through lost corner proportionate methods, indicate all monuments, distances and directions used to establish. Indicate type of monument and sign post found or set.

Date unknown: OCS map C-2039 by John H. Fisher, RLS indicates corner is marked by an iron pipe and witnessed by: maple 6" N46°W, 10.2' and w. birch 4" S14°W, 11.4'.

May 24, 1977: OCS map C-357 By Fred Copp, RLS indicates corner is marked by a 2" iron pipe and witnessed by: maple 6" N46°W, 10.2' and w. birch 4" S14°W, 11.4'.

May 15, 2004: I found and accepted Copp's monument, a 30 ins. long, 2-1/2 ins. diam. iron pipe. From this monument, I also found a distinct 2 ins. diam. hole in the ground bearing S89°E, 30 ft. This point is witnessed by both of the bearing trees listed on the Fisher and Copp maps. I believe Fisher initially set this point incorrectly and Copp discovered the error during his survey and allowed Fisher to move the monument. Evidently, Copp mistakenly used the old bearing tree information on his map. This assumption is supported by several GPS measurements to other corners in section 32, all of which agree with the measurements shown on Copp's map. In place of the pipe, I set an aluminum post, 30 ins. long, 2-1/2 ins. diam. with Oneida Co. aluminum cap projecting 4 ins. above the ground. I established accessories as shown below and set a white plastic sign post bearing East, 1 ft. dist.

(c) (d) (e) Plan view of corner with ties to at least 4 witness monuments. If in disagreement with previously established corner, show the distances between the two corners and also indicate the ties to the disputed.



(i) I, Jeffrey W. Austin, Registered Land Surveyor No. S-1885, hereby certify upon honor that the corner location on this record was determined by me or under my direction and control and that this U.S. Public Land Survey Monument Record is correct and complete to the best of my knowledge and belief.

Signature: *[Handwritten Signature]* Date: *Mar 30, 2010*



3908 31 2000