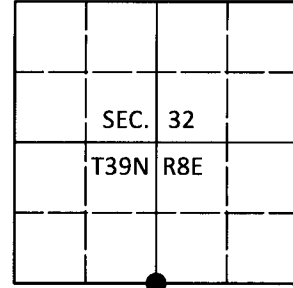


U.S. PUBLIC LAND SURVEY MONUMENT RECORD

Note: This form is intended and designed to fulfill all requirements of Wisconsin Administrative Code, Chapter A-E 7.08 U.S. Public Land Survey Monument Record (3)(a-i).

(a) CORNER LOCATION
 1/4 Cor. of Secs. 5 & 32
 Township 38 & 39 North
 Range 8 East of the 4th P.M.
 Town of Newbold
 County of Oneida

WISCORS - Oneida County
 N: 230,411.52 USft
 E: 236,513.53 USft
 Datum: NAD 83(2011)
 GNSS Method: RTN - Direct
 GNSS Control: WISCORS VRS



(b) HISTORY OF ORIGINAL CORNER ESTABLISHMENT

Original Surveyor: Alfred Millard

Original Accessories:

Date of Survey Commenced: Aug 1860
 Completed: Sep 1860

Y.Pine 20" N62-1/2°E, 40 lks.
 W.Birch 6" S49°W, 10 lks.

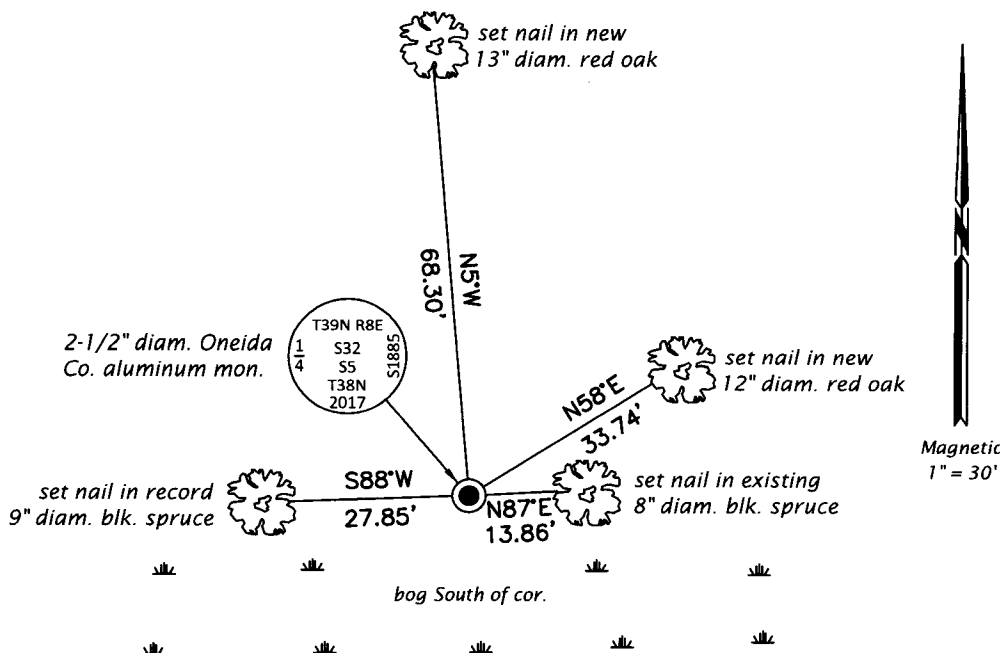
(b)(f)(g)(h) Description of monument found at this corner and if it was accepted, state all evidence (material, testimonial, occupational, plats, records, other monuments) used as a basis for accepting. If not accepted or if nothing was found, state evidence used as basis for establishing location. If re-established through lost corner proportionate methods, indicate all monuments, distances and directions used to establish. Indicate type of monument and sign post found or set.

24 May 1977: OCS Map No. C-357 by Fred Copp, RLS. Corner marked by a 4" sq. wood post and witnessed by: PW (stp.) N64°E, 27.8' and SB 6" S88°W, 27.6'.

25 Oct 2017: I found and accepted a 2-1/2" diam., 48" long iron pipe with coupling of unknown origin. I found the scribed stump of the GLO red pine bearing N65°E, 27.2 ft. In place of the iron pipe, I set a 2-1/2" diam., 42" long aluminum pipe with a 3-1/4" diam. Oneida Co. aluminum cap projecting 4" above the bog surface. I found or established accessories as shown below and set a white vinyl sign post bearing Southwest, 1 ft. dist.

The coordinate value shown has been verified by at least one of the following methods: 1) comparison to a previously GPS determined published value; 2) the value is the average of two or more GPS observations at a markedly different time; 3) one or more distances were measured back to the GPS observed corner from temporary GPS observed offset locations.

(c)(d)(e) Plan view of corner with ties to at least 4 witness monuments. If in disagreement with previously established corner, show the distances between the two corners and also indicate the ties to the disputed.



REGISTER OF DEEDS OFFICE
 ONEIDA COUNTY
 FILED

JAN 02 2018

KYLE J. FRANSON
 REGISTER OF DEEDS

(i) I, Jeffrey W. Austin, Professional Land Surveyor No. S-1885, hereby certify that the corner location on this record was determined by me or under my direction and control and that this U.S. Public Land Survey Monument Record is correct and complete to the best of my knowledge and belief.

[Handwritten Signature]
 Signature

26 DEC 2017
 Date