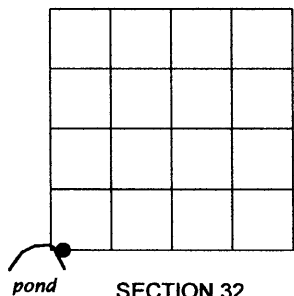


# U.S. PUBLIC LAND SURVEY MONUMENT RECORD

Note: This form is intended and designed to fulfill all requirements of the Wisconsin Administrative Code, Chapter A-E 7.08 U.S. Public Land Monument Record (3)(a)(b)(c)(d)(e)(f)(g)(h)(i). An additional sheet may be added if necessary to conform with said requirements.

|   |  |
|---|--|
| <p>(a) CORNER LOCATION:</p> <p>Witness Corner, Section 32<br/>                 Township 39 North<br/>                 Range 8 East<br/>                 Town of Newbold<br/>                 County of Oneida</p> | <p>COORDINATES</p> <p>North:<br/>                 East:<br/>                 Control Station:<br/>                 Latitude:<br/>                 Longitude:<br/>                 Datum Method</p> |
|---|--|



(b) HISTORY OF ORIGINAL CORNER ESTABLISHMENT

|   |                               |
|---|-------------------------------|
| Original Surveyor: A. Millard           | Original B.T.'S               |
| Date of Survey: Commenced, August, 1860 | Spruce 9" dia. N17°E 61 links |
| Completed, September, 1860              | Spruce 6" dia. S7°E 159 links |

(f)(g)(h) DESCRIPTION OF MONUMENT FOUND AT THIS CORNER AND IF IT WAS ACCEPTED, STATE ALL EVIDENCE (MATERIAL, TESTIMONIAL, OCCUPATIONS, PLATS, RECORDS, OTHER MONUMENTS) USED AS A BASIS FOR ESTABLISHING LOCATION. IF NOT ACCEPTED OF IF NOTHING WAS FOUND, STATE EVIDENCE USED AS BASIS FOR ESTABLISHING LOCATION. IF REESTABLISHED THROUGH LOST CORNER PROPORTIONATE METHODS, INDICATE ALL MONUMENTS, DISTANCES AND DIRECTIONS USED TO ESTABLISH. INDICATE TYPE OF MONUMENT AND SIGN POST FOUND OR SET.

*Original Surveyor: A. Millard, west between Sections 32 and 5, at 79.50 chains set post for Witness Corner.*

*John H. Fisher: Northwoods Surveyors, Inc., shows Witness Corner to be monumented with an iron pipe, and witnessed by the following bearing trees: 2" Tamarack S8W 6.2' and a 4" Spruce N84E 18.1'.*

*Frederic H. Copp: Department of Natural Resources, 5/24/77, shows Witness Corner to be monumented with an iron pipe, and witnessed by the following bearing trees: SB 4" N84E 18.1' and a T 2" S8W 6.2'. He also notes that a brass capped iron pipe Witness Corner bears North 30 degrees 09 minutes 01 seconds West for a distance of 40.66'.*

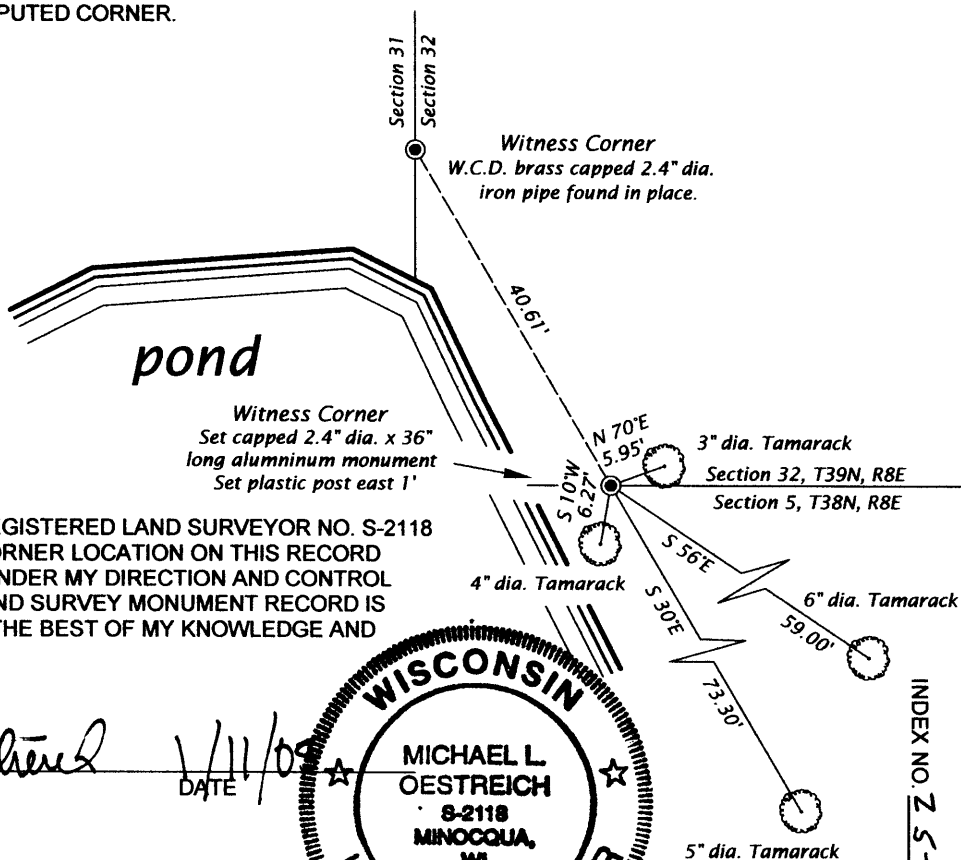
*Michael L. Oestreich: 10/21/04, recovered a 1.3" dia. iron pipe, and the following witnesses: a 4" dia. Tamarack S10W 6.27' and a W.C.D. brass capped iron pipe northwesterly at a distance of 40.61'. I set a capped aluminum monument, stamped to identify corner over the existing iron pipe, and made ties as shown in the plan below.*

(c)(d)(e) PLAN VIEW OF CORNER WITH TIES TO AT LEAST 4 WITNESS MONUMENTS. IF IN DISAGREEMENT WITH PREVIOUSLY ESTABLISHED CORNER, SHOW THE DISTANCE BETWEEN THE TWO CORNERS AND ALSO INDICATE THE TIES TO THE DISPUTED CORNER.

Bearings magnetic



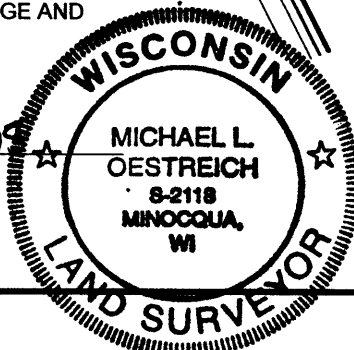
Measurement to trees taken to 8d aluminum nail in the side of tree.



(i) I, MICHAEL L. OESTREICH, REGISTERED LAND SURVEYOR NO. S-2118 HEREBY CERTIFY THAT THE CORNER LOCATION ON THIS RECORD WAS DETERMINED BY ME OR UNDER MY DIRECTION AND CONTROL AND THAT THIS U.S. PUBLIC LAND SURVEY MONUMENT RECORD IS CORRECT AND COMPLETE TO THE BEST OF MY KNOWLEDGE AND BELIEF.

*Michael L. Oestreich*  
 SIGNATURE

11/11/04  
 DATE



3908320039

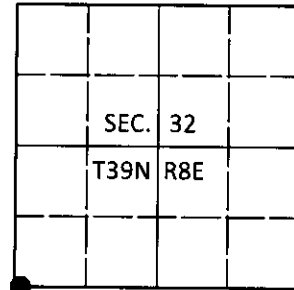
INDEX NO. Z 5-6

# U.S. PUBLIC LAND SURVEY MONUMENT RECORD

Note: This form is intended and designed to fulfill all requirements of Wisconsin Administrative Code, Chapter A-E 7.08 U.S. Public Land Survey Monument Record (3)(a-i).

(a) CORNER LOCATION  
 Witness Cor. of Secs. 5 & 32  
 Township 38 & 39 North  
 Range 8 East of the 4th P.M.  
 Town of Newbold  
 County of Oneida

WISCORS - Oneida County  
 N: 230,387.80 USft  
 E: 233,961.00 USft  
 Datum: NAD 83(2011)  
 GNSS Method: RTN - Direct  
 GNSS Control: WISCORS VRS



(b) HISTORY OF ORIGINAL CORNER ESTABLISHMENT

Original Surveyor: \_\_\_\_\_ Original Accessories: \_\_\_\_\_  
 Date of Survey \_\_\_\_\_ Commenced: \_\_\_\_\_ See previous USPLS Monument Record  
 Completed: \_\_\_\_\_

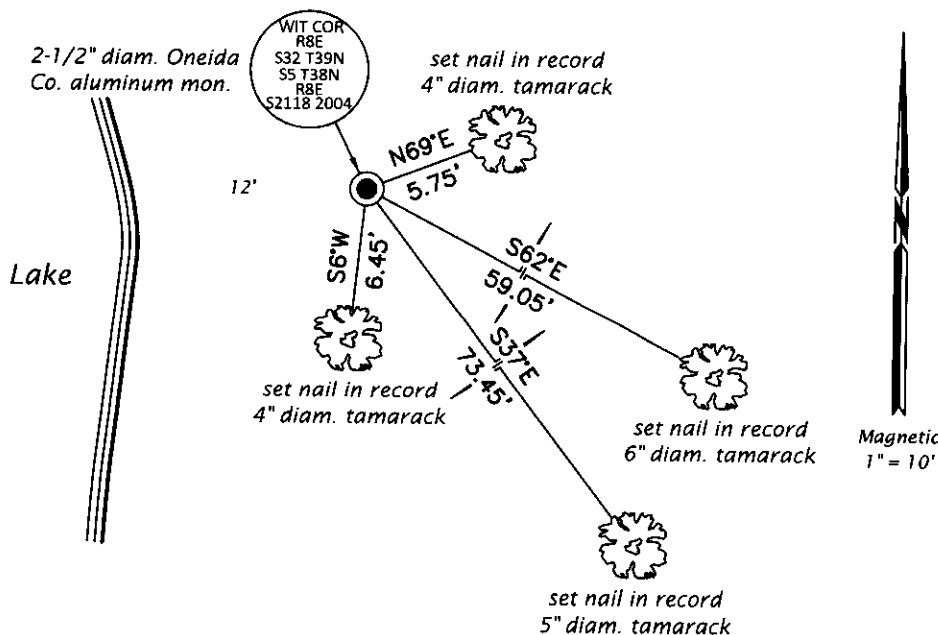
(b)(f)(g)(h) Description of monument found at this corner and if it was accepted, state all evidence (material, testimonial, occupational, plats, records, other monuments) used as a basis for accepting. If not accepted or if nothing was found, state evidence used as basis for establishing location. If re-established through lost corner proportionate methods, indicate all monuments, distances and directions used to establish. Indicate type of monument and sign post found or set.

*This is a perpetuation of a previous USPLS Monument Record by Michael L. Oestreich, RLS dated January 11, 2005 and filed in the office of the Oneida County Register of Deeds. A complete history of the corner can be found on the previous monument record. I accept the previous location as a true and faithful perpetuation or reestablishment of the original corner location and further perpetuate it as follows.*

*August 27, 2018: I found and accepted the record monument, a 2-1/2" diam. aluminum pipe with a 3-1/4" diam. Oneida Co. aluminum cap projecting 8" above the bog surface. I found or established accessories as shown below. I found a white vinyl sign post bearing East, 0.9 ft.*

*The coordinate value shown has been verified by at least one of the following methods: 1) comparison to a previously GPS determined published value; 2) the value is the average of two or more GPS observations at a markedly different time; 3) one or more distances were measured back to the GPS observed corner from temporary GPS observed offset locations.*

(c)(d)(e) Plan view of corner with ties to at least 4 witness monuments. If in disagreement with previously established corner, show the distances between the two corners and also indicate the ties to the disputed.



REGISTER OF DEEDS OFFICE  
 ONEIDA COUNTY  
 FILED

SEP 10 2018

KYLE J. FRANSON  
 REGISTER OF DEEDS

(i) I, Jeffrey W. Austin, Professional Land Surveyor No. S-1885, hereby certify that the corner location on this record was determined by me or under my direction and control and that this U.S. Public Land Survey Monument Record is correct and complete to the best of my knowledge and belief.

*[Handwritten Signature]*  
 \_\_\_\_\_  
 Signature

SEP. 5, 2018  
 \_\_\_\_\_  
 Date