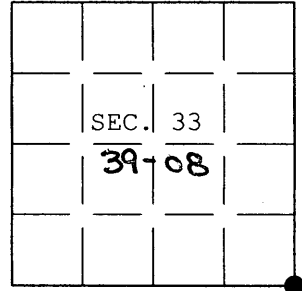


**U.S. PUBLIC LAND SURVEY MONUMENT RECORD**

Note: This form is intended and designed to fulfill all requirements of Wisconsin Administrative Code, Chapter A-E 7.08 U.S. Public Land Survey Monument Record (3) (a) (b) (c) (d) (e) (f) (g) (h) (i). An additional sheet may be added if necessary to conform with said requirements.

(a) CORNER LOCATION: Plane Coordinates  
 Cor. of Secs. 33, 34, 3 & 4 X:  
 Township 38 & 39 North Y:  
 Range 8 East of the 4th P.M. Datum:  
 Town of Newbold County of Oneida



(b) HISTORY OF ORIGINAL CORNER ESTABLISHMENT

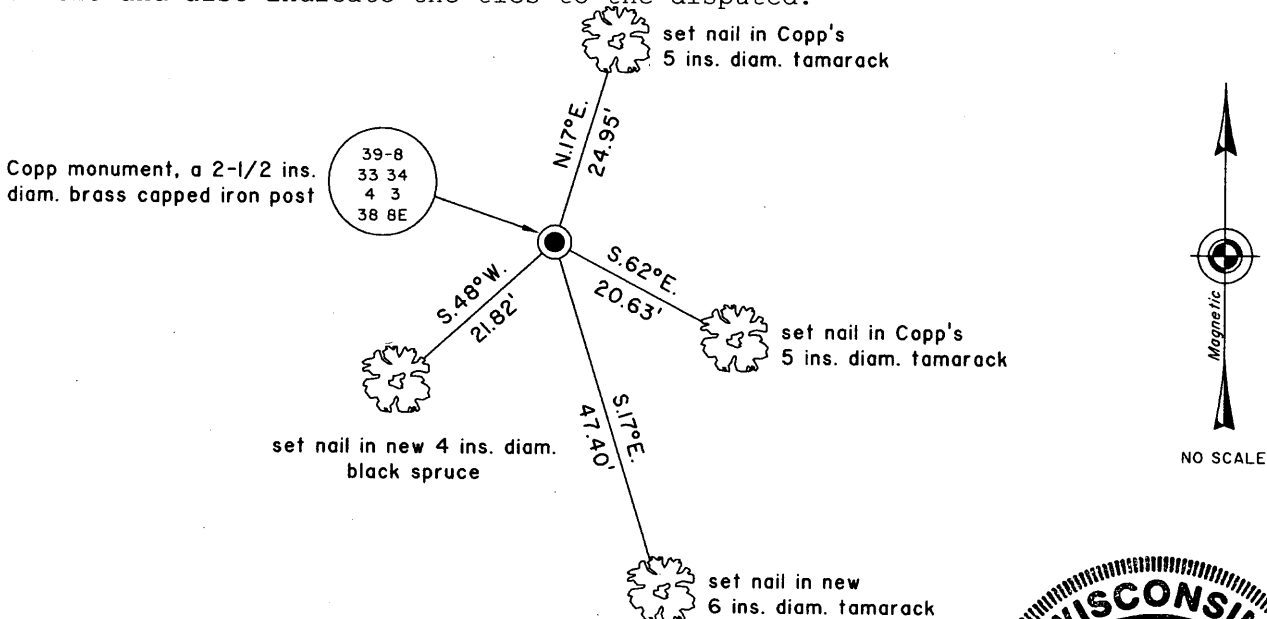
Original Surveyor: Millard, Alfred Original Accessories:  
 Date of Survey: Commenced Aug. 1860 spruce 2" North, 8 lks.  
 Completed Sept. 1860 spruce 3" N.49°W., 32 lks.  
 spruce 3" N.26°E., 65 lks.  
 spruce 3" S.35°W., 45 lks.

(b)(f)(g)(h) Description of monument found at this corner and if it was accepted, state all evidence (material, testimonial, occupational, plats, records, other monuments) used as a basis for accepting. If not accepted or if nothing was found, state evidence used as basis for establishing location. If re-established through lost corner proportionate methods, indicate all monuments, distances and directions used to establish. Indicate type of monument and sign post found or set.

24 May 1977: OCS# C-357 by Fred H. Copp of the Wisconsin Dept. of Natural Resources. WCD 2" IP with brass cap. Tamarack 5" S.65°E., 20.6 ft. and a tamarack 6" N.12°E., 24.9 ft.

12 May 2004: I found and accepted Copp's monument, a 2-1/2 ins. diam. iron post, projecting 16 ins. above the bog with WCD brass cap mkd. as shown below. I found or established accessories as shown below and set a white plastic sign post bearing Northeast, 1 ft. dist.

(c)(d)(e) Plan view of corner with ties to at least 4 witness monuments. If in disagreement with previously established corner, show the distances between the two corners and also indicate the ties to the disputed.



(i) I, Jeffrey W. Austin, Registered Land Surveyor No. S-1885, hereby certify upon honor that the corner location on this record was determined by me or under my direction and control and that this U.S. Public Land Survey Monument Record is correct and complete to the best of my knowledge and belief.

Signature \_\_\_\_\_ Date 30 JAN 2005



39 08 33 00 00