

U.S. PUBLIC LAND SURVEY MONUMENT RECORD

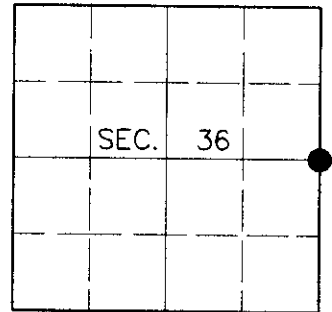
Note: This form is intended and designed to fulfill all requirements of Wisconsin Administrative Code, Chapter A-E 7.08, U.S. Public Land Survey Monument Record (3)(a)(b)(c)(d)(e)(f)(g)(h)(i). An additional sheet may be added if necessary to conform with said requirements.

(a) CORNER LOCATION

East 1/4 Corner of Section 36
 Township 39 North
 Range 8 East
 Town of Newbold

State Plane Coordinates

X
 Y
 Datum
 County of Oneida



(b) HISTORY OF ORIGINAL CORNER ESTABLISHMENT

Original Surveyor: Hiram C. Fellows

Original Bearing Trees:

Date of Survey: Commenced July, 1859
 Completed July, 1859

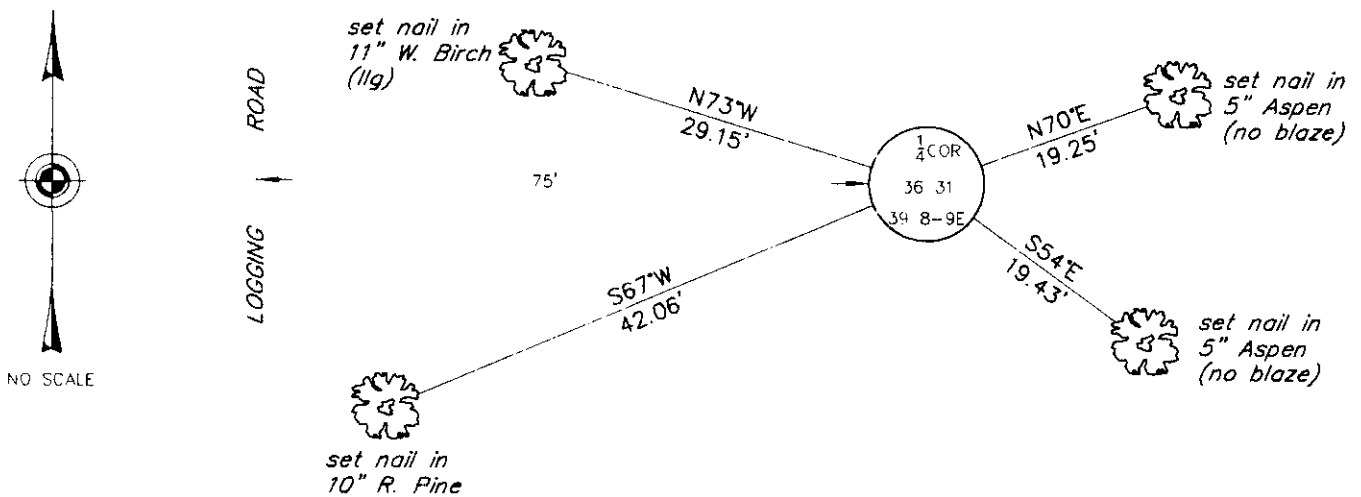
Sugar 10 N4°W, 17 links
 W. Pine 12 S36°E, 19 links

(b)(f)(g)(h) Description of monument found at this corner and if it was accepted, state all evidence (material, testimonial, occupational, plats, records, other monuments) used as a basis for accepting. If not accepted or if nothing was found, state evidence used as basis for establishing location. If reestablished through lost corner proportionate methods, indicate all monuments, distances and directions used to establish. Indicate type of monument and sign post found or set.

1964: OCS Map #L-635 by Robert Ilg, Registered Land Surveyor. Ilg set a WCD pipe with the following bearing trees: BW 8" N4°E, 0.178 ch.; BW 9" N72°W, 0.433 ch.

June 17, 2000: I found and accepted a 2-1/2" dia. iron pipe with 3" dia. WCD brass cap 22" above grade and marked as shown below. I found Ilg's W. Birch snag 10" N5°E, 12.2 feet. I established accessories as shown below and set a plastic sign post Southeast, 1 foot.

(c)(d)(e) Plan view of corner with ties to at least 4 witness monuments. If in disagreement with previously established corner, show the distances between the two corners and also indicate the ties to the disputed corner.



(i) I, Jeffrey W. Austin, Registered Land Surveyor S-1885, hereby certify that the corner location on this record was determined by me or under my direction and control and that this U.S. Public Land Survey Monument Record is correct and complete to the best of my knowledge and belief.

Signature: *[Handwritten Signature]* Date: 7-30-00



INDEX NO. X-25

3908362000