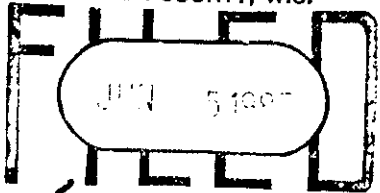


REGISTER OF DEEDS OFFICE
ONEIDA COUNTY, WIS.



At 5:00 O'clock P.M.

CORIE VERAGE KUEHN
REGISTER OF DEEDS

State of Wisconsin

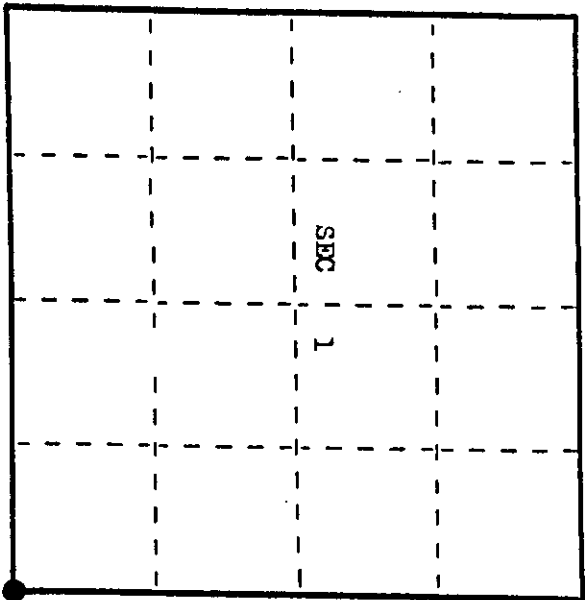
County of Vilas-Oneida

ss.

I Thomas A. Boettcher do hereby certify that on the 7th day of April 1987, I found evidence of the Southeast Section 1 corner of Section 1 Township 39 North, Range 19 East, Fourth Principal Meridian, as described hereon; and that from this evidence I established a new monument and accessories as described hereon to perpetuate the original location of this corner.

Resident witnesses:

Eric Zynowski



● - Corner monument restored.

U. S. Public Land Survey Monument Record

Index No.

E-25

History of original corner establishment:

Original corner was established in the course of running the Range line between R 9 E and R 10 E, of T 39 N, which was done on July 24, 1859 by H.C. Fellows, deputy surveyor.

Original B.T.'S:

- 18" W. Pine S 50° W 79 lks.
- 9" Maple N 46° W 28 lks.
- 10" Birch N 82° E 38 lks.
- 15" Spruce S 40° E 19 lks.

Description of corner evidence found:

Found 6" x 6" concrete monument 12" above the ground previously used and accepted as the Section corner in previous surveys in this area.

Found 4" x 4" Wood post 1.0 + feet South of the corner.

Found the following bearing trees measured to a nail in the side:

- 8" Maple S 60° E 35.66 feet.
- 17" Oak S 42° W 18.20 feet.

Fence corner is North 25' and runs North and East. Another fence corner is South 16' and runs West. Centerline of an old two-rut road is North 6 feet. Description of monument and accessories I established to perpetuate the original location of this corner.

Set a 2 1/4" x 30" aluminum magnetic capped monument stamped to identify the corner 2" above the ground in place of the above mentioned concrete monument. Left the concrete monument lying next to the corner.

Place a sign on the above mentioned wood post.

Blazed and scribed the following new bearing trees measured to a nail in the side:

- 13" Oak S 88° W 37.07 feet.
- 4" W. Pine N 10° E 41.14 feet.

Dated at Eagle River, Wis., this 7th day of April, 1987

Signature: *[Signature]* Title: Registered Land Surveyor Registration No. S-1763
(County Surveyor, Registered Land Surveyor, or other duly authorized official)

Office of Register of Deeds, County of Vilas, Wisconsin. I hereby certify that the within instrument was filed in this office for record on the 7th day of April, 1987 at 5:00 o'clock P.M.

(Register of Deeds)

By: *[Signature]* Deputy

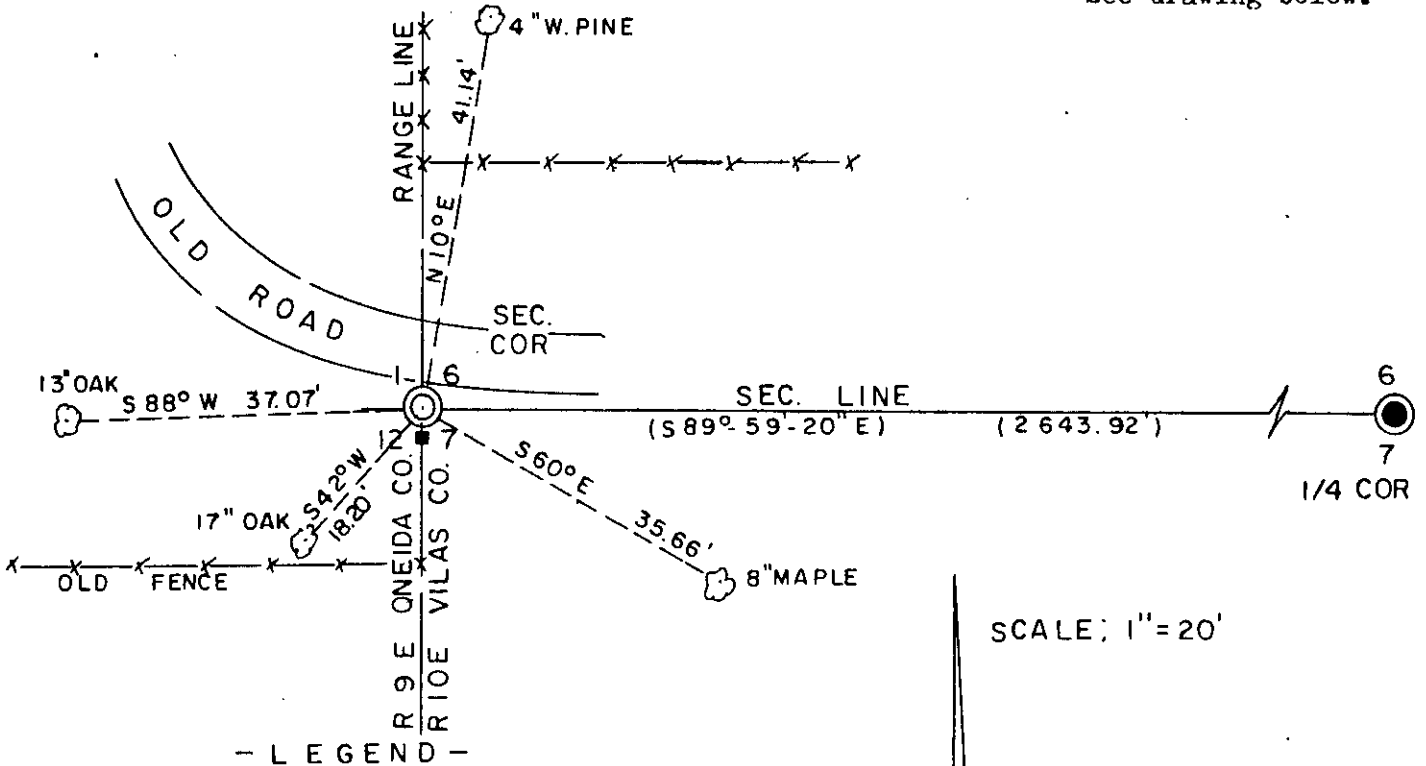
3909010000

Describe any material discrepancy between the location of the corner as restored or reestablished and the location of that corner as previously restored or reestablished by distance and direction. Show the discrepancy on the plan view drawing under (d), above. Show the distances between the corner as previously restored or reestablished and (1) the corner as restored or reestablished, and (2) to at least 2 of the witness monuments shown on the drawing in (d), above. See drawing below.

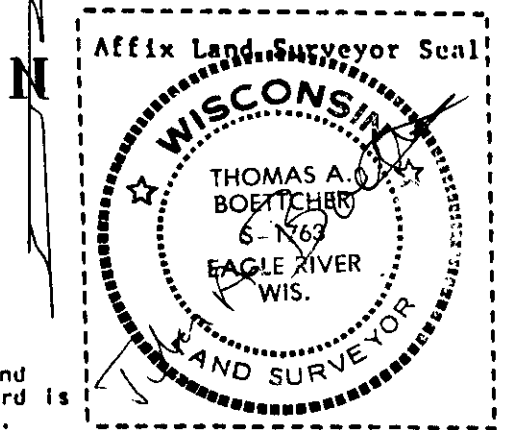
Was the corner restored through acceptance of (1) an obliterated evidence location, or, (2) a found perpetuated location?

The corner was restored through acceptance of a found perpetuated location as evidenced by the 6" x 6" concrete monument and bearing trees found.

Was the corner reestablished through lost corner proportionate methods? If so, show the method, including the directions and distances to other public land survey corners used as evidence or used for proportioning in determining the corner location? See drawing below.



SCALE: 1" = 20'



- ⊙ VILAS COUNTY ALUMINUM MAGNETIC CAPPED MONUMENT SET
- VILAS COUNTY IRON PIPE - BRASS CAP
- ⊙ BEARING TREE MEASURED TO NAIL IN SIDE
- 4"x4" SIGN POST NEXT TO CORNER
- x—x—x—x—x FENCE LINE
- () GENISOT & ASSOC. BEARING & DISTANCE

I, Thomas A. Boettcher R.L.S.#1763
 (type or print name) certify that the corner location shown on this record was determined by me or under my direction and control and that this U.S. Public Land Survey Monument Record is correct and complete to the best of my knowledge and belief.

Thomas A. Boettcher 4/7/87
 Signature Date