

U.S. PUBLIC LAND SURVEY MONUMENT RECORD

Note: This form is intended and designed to fulfill all requirements of Wisconsin Administrative Code, Chapter A-E 7.08 U.S. Public Land Survey Monument Record (3) (a) (b) (c) (d) (e) (f) (g) (h) (i). An additional sheet may be added if necessary to conform with said requirements.

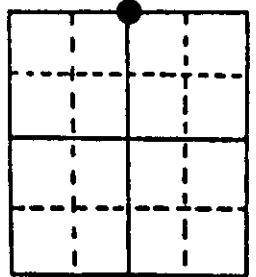
(a) Corner location: Township 39 North Corner: North 1/4

Section 12 Range 9 East Original Surveyor: William Daugherty

Town/City/Village Sugar Camp

Original B.T.'s: 8" H N28°E 35 lks
7" H S36°W 11 lks

County Oneida

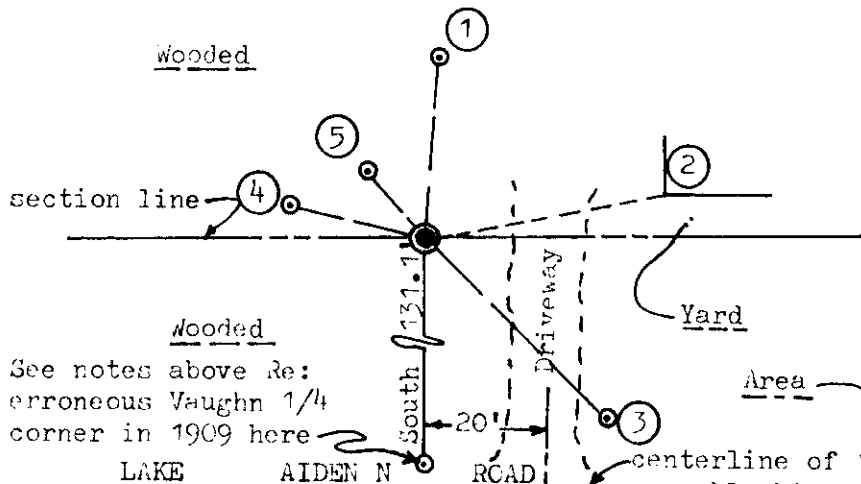


Original Survey Date: September 1863 ● Location

(b) (f) (g) (h) Description of monument found at this corner and if it was accepted, state all evidence (material, testimonial, occupational, plats, records, other monuments) used as a basis for accepting. If not accepted or if nothing was found, state evidence used as basis for establishing location. If reestablished through lost corner proportionate methods, indicate all monuments, distances and directions used to establish. Indicate type of monument found or set and sign post.

I found and accepted a red painted 1" dia. iron pipe in a large maple tree clump root at this corner location, which upon query by phone call same date, was approved as a record monument in lieu of a capped monument required by Oneida County, to County Surveyor Mike Romportl. The iron pipe falls at north edge of the root crown of a previously blazed 11" Mr trunk of an 8 trunk clump of Mr south of corner. I set a standard white poly 'T' corner marker post 11" North of the corner monument. All original GLC survey corner post and OBTs have apparently been obliterated and/or not noted by Vaughn in 1909 or by Ilg/WCD in 1972, who set the iron pipe found on the section line at 42.133 chains each way between section corners, which he noted fell N04°E 1.986 chains from an erroneous proportioned corner by Vaughn in 1909, marked by a 3/4" iron pipe flush to grade and 5 1/2' North of centerline of existing gravel road; Ilg also noted he found Vaughns BTs, a 20" Pw stump N31°W 13 lks now gone, and a 26" Pw stump S71°E 1.030 chains, not found this date. I spotted the iron pipe at erroneous corner by Vaughn in existing black top road surface with a PK masonry nail by metal locator intersect, 2 feet South of North edge of pavement and measured ties to an 8" Mr N25°W 37.50', a 10" Bw N33°E 67.40' and S30°E 38.20' to West trunk of a 4 trunk Mr. This recovery completed October 29, 1997; there were no witnesses.

(c) (d) (e) Plan view of corner with ties to at least 4 witness monuments. If in disagreement with previously established corner, show the distances between the two corners and also indicate the ties to the disputed corner.

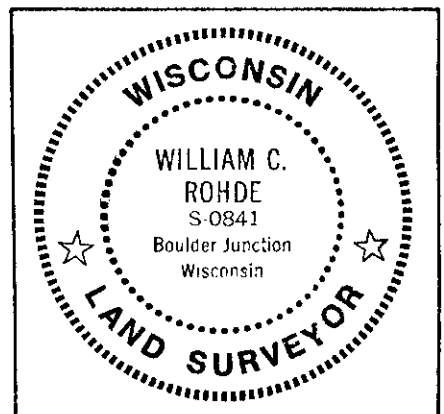


Witness Monument Ties:

- ① New BT 10" Mr N03°E 37.66'.
- ② SW corner of existing mobile home at grade, N79°E 50.65'.
- ③ New BT West 10" trunk of 4 trunk Bw S55°E 53.27'.
- ④ New BT 8" Mr N75°W 29.17'.
- ⑤ New BT 8" Aspen N41°W 18.24'.

Unless otherwise indicated, all BT witness monument ties are to a 1/4" dia. by 2.5" long PK nail with 1.25" dia. steel washer set in unblazed right face bark; and a PK nail with 2" dia. steel washer stamped BT also set in unblazed front face bark of each BT at DBH. All previous corner recovery notes from Wisconsin DNR and/or Oneida County survey records.

Scale: 1" = 40'



Index No. E 23

(i) I, William C. Rohde, RLS 841
(type or print name) certify that the corner location on this record was determined by me or under my direction and control and that this U.S. Public Land Survey Monument Record is correct and complete to the best of my knowledge and belief.

William C. Rohde Nov. 09, 1997
Signature Date