

State of Wisconsin

County of Waushara

} ss.

I Thomas A. Buehler, do hereby certify that on the 21st day of January, 1927, I found evidence of the east corner of Section 1 Township 9 East, North, Range 4 Fourth Principal Meridian, as described hereon; and that from this evidence I established a new monument and accessories as described hereon to perpetuate the original location of this corner.

Resident witnesses:

John W. ...

U. S. Public Land Survey Monument Record

Index No. 2-25

History of original corner establishment:

Original corner was established by leveling the corner of the ... of the ... of ... on July 24, 1854, by H. H. ...

Original S.W. 1/4

100 3/4 x 100 3/4 ...
100 3/4 x 100 3/4 ...

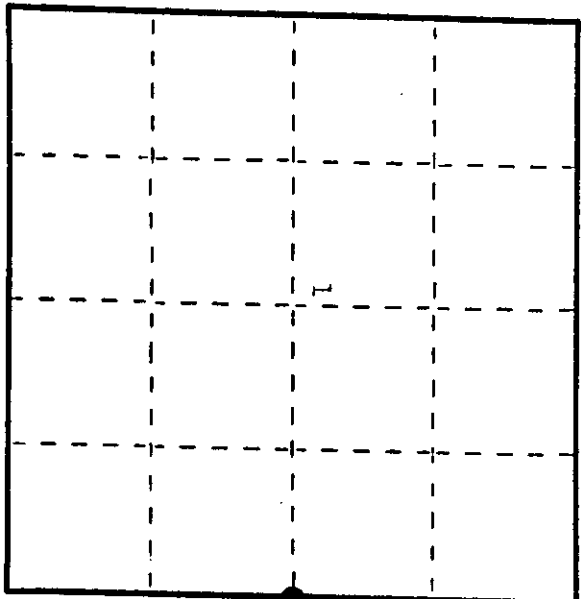
Description of corner evidence found:

Found ... corner ...

...

Description of monument and accessories I established to perpetuate the original location of this corner.

On the ... I established a new monument and accessories as described hereon to perpetuate the original location of this corner.



● Corner monument restored.

Dated at Waushara, Wis., this 21st day of January, 1927

Signature Thomas A. Buehler Title Registered Land Surveyor Registration No. 1767
(County Surveyor, Registered Land Surveyor, or other duly authorized official)

Office of Register of Deeds, County of Waushara, I hereby certify that the within instrument was filed in this office for record on the 21st day of January, 1927 at 10 o'clock A. M.

(Register of Deeds)

By John W. ... Deputy

3909012000

Describe any material discrepancy between the location of the corner as restored or reestablished and the location of that corner as previously restored or reestablished by distance and direction. Show the discrepancy on the plan view drawing under (d), above. Show the distances between the corner as previously restored or reestablished and (1) the corner as restored or reestablished, and (2) to at least 2 of the witness monuments shown on the drawing in (d), above.

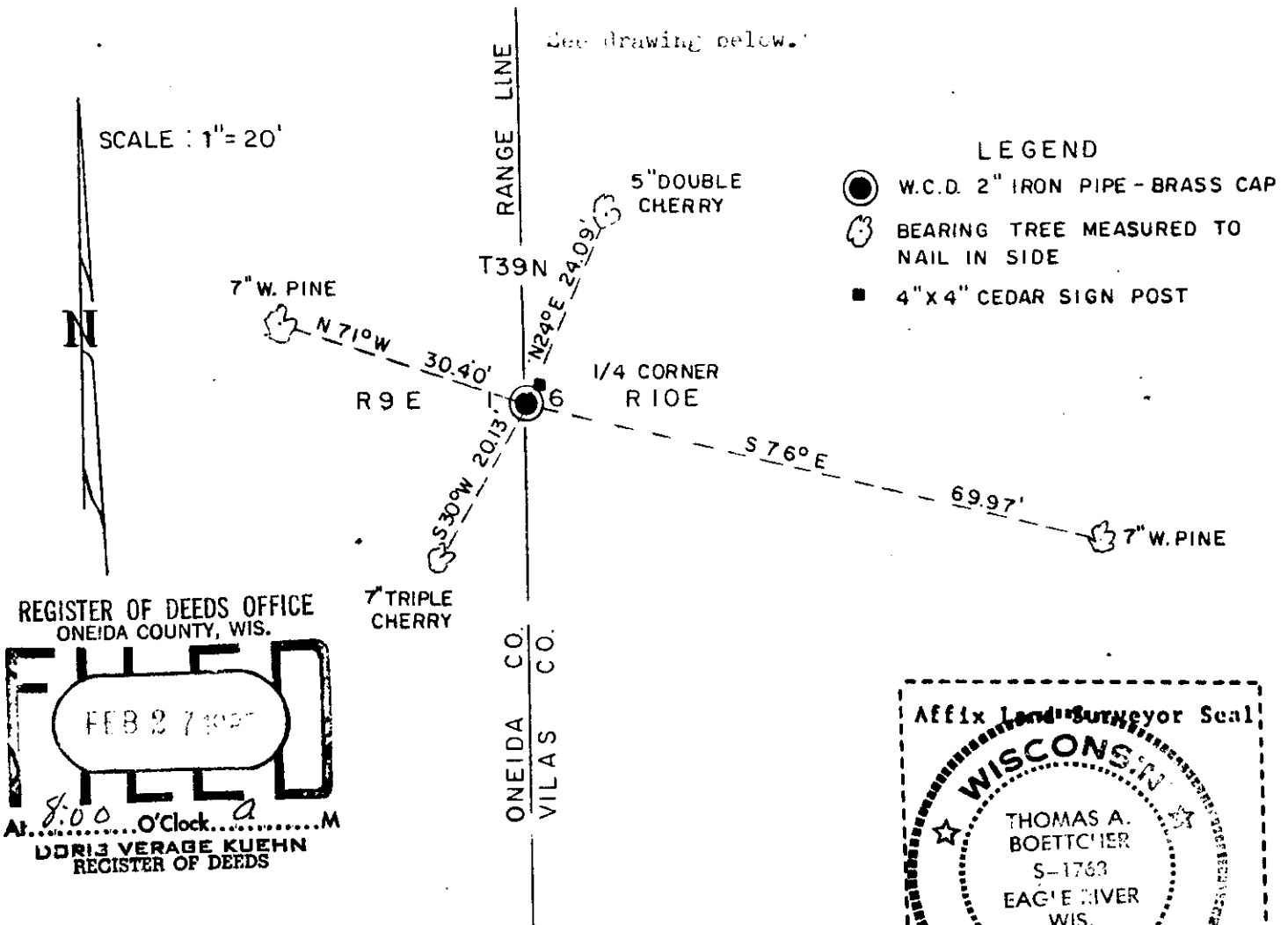
See drawing below.

Was the corner restored through acceptance of (1) an obliterated evidence location, or, (2) a found perpetuated location?

We accepted a found perpetuated location as monumented by the Wisconsin Conservation Department.

Was the corner reestablished through lost corner proportionate methods? If so, show the method, including the directions and distances to other public land survey corners used as evidence or used for proportioning in determining the corner location?

See drawing below.



REGISTER OF DEEDS OFFICE
ONEIDA COUNTY, WIS.

FILED

FEB 27 1987

At 8:00 O'Clock a.m.

DORIS VERAGE KUEHN
REGISTER OF DEEDS

Affix Land Surveyor Seal

WISCONSIN

THOMAS A. BOETTCHER
S-1763
EAGLE RIVER
WIS.

LAND SURVEYOR

I, Thomas A. Boettcher, R.L.S.#1763
(Type or print name) certify that the corner location shown on this record was determined by me or under my direction and control and that this U.S. Public Land Survey Monument Record is correct and complete to the best of my knowledge and belief.

Thomas A. Boettcher Signature FEB 4, 1987 Date