

CERTIFIED LAND CORNER RESTORATION

Index No. **E-21**

State of Wisconsin } ss.

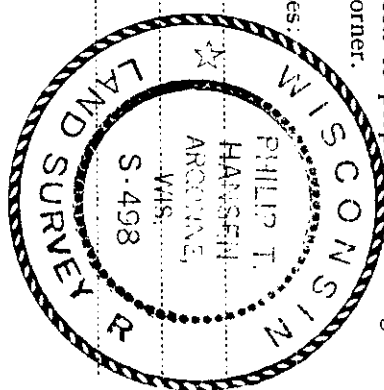
County of Oneida

I Phillip T. Hansen do hereby certify that on the 6th day of May, 1975, I found

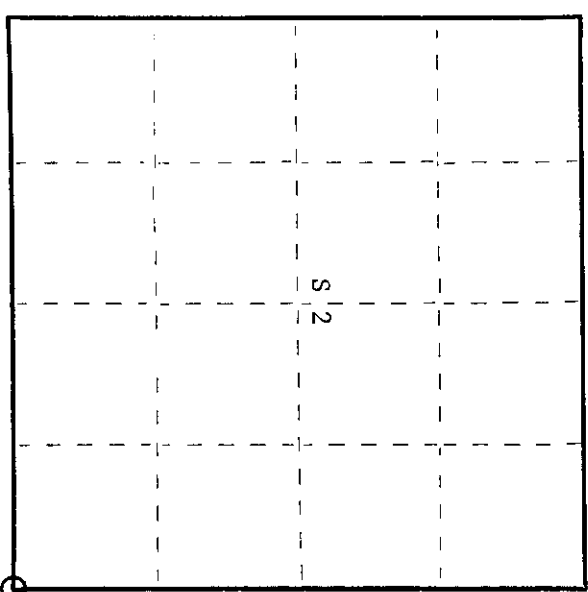
evidence of the Section corner of Sections 1, 2, 11, and 12 Township 39, North, Range 9 East, Fourth Principal Meridian,

as described hereon; and that from this evidence I established a new monument and accessories as described hereon to perpetuate the original location of this corner.

Resident witnesses:



T39N R9E



○ = Corner monument restored.

History of original corner establishment:

Corner established by Wm. E. Dougherty, Govt. Deputy Surveyor, in 1863 from which birch 10" bears S70°W, 26 links and birch 10" bears N54°E, 9 links. Corner reestablished by R. Ilg, State Surveyor, in 1971. He did not agree with calls made by D.H. Vaughan. Ilg set 2-1/2" iron pipe w/brass cap stamped -

Established BT's: Red pine 12" N44°E 203 links scribed "W" S1 BT
Sugar 10" S68°W 985 links scribed "W" S11 BT.

Description of corner evidence found:

Recovered R. Ilg's 2-1/2" iron pipe w/brass cap in good condition.

Recovered above-mentioned BT's in good condition.

Description of monument and accessories I established to perpetuate the original location of this corner.

No additional accessories established.

3909020000

Dated at Rhineland, Wis., this 30th day of June, 1975.

Signature Phillip T. Hansen Title Registered Land Surveyor Registration No. S-498
(County Surveyor, Registered Land Surveyor, or other duly authorized official)

Office of Register of Deeds, County of Oneida
Instrument was filed in this office for record on the 1st day of October, 1975
at 3:00 o'clock P. M.

Doris Terage Kuehn
(Register of Deeds)

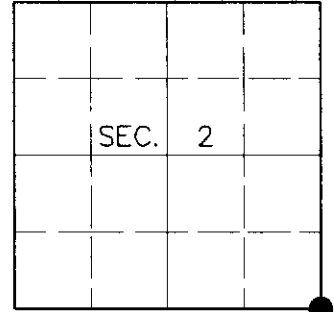
By: _____ Deputy

U.S. PUBLIC LAND SURVEY MONUMENT RECORD

Note: This form is intended and designed to fulfill all requirements of Wisconsin Administrative Code, Chapter A-E 7.08, U.S. Public Land Survey Monument Record (3)(a)(b)(c)(d)(e)(f)(g)(h)(i). An additional sheet may be added if necessary to conform with said requirements.

(a) CORNER LOCATION
 Southeast Corner of Section 2
 Township 39 North
 Range 9 East
 Town of Sugar Camp

State Plane Coordinates
 X
 Y
 Datum
 County of Oneida



(b) HISTORY OF ORIGINAL CORNER ESTABLISHMENT

Original Surveyor: William E. Daugherty

Original Bearing Trees:

Date of Survey: Commenced Sept. 22, 1863
 Completed Sept. 29, 1863

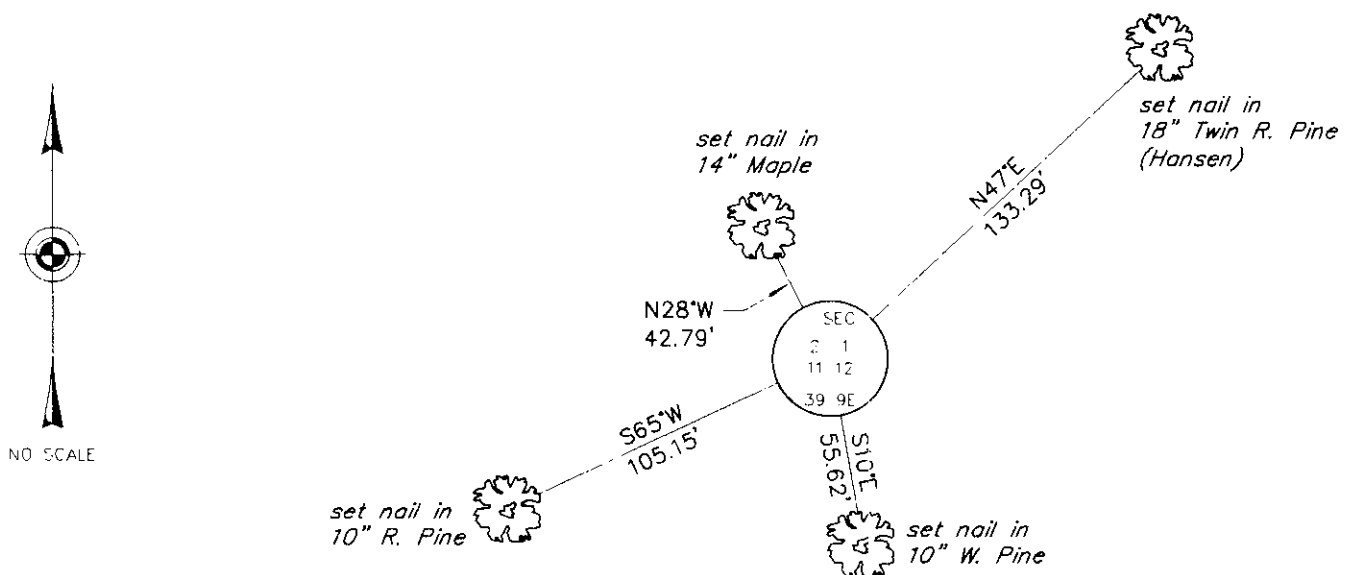
Birch 10 S70°W, 26 links
 Birch 10 N54°E, 9 links

(b)(f)(g)(h) Description of monument found at this corner and if it was accepted, state all evidence (material, testimonial, occupational, plats, records, other monuments) used as a basis for accepting. If not accepted or if nothing was found, state evidence used as basis for establishing location. If reestablished through lost corner proportionate methods, indicate all monuments, distances and directions used to establish. Indicate type of monument and sign post found or set.

June 30, 1975: Certified Land Corner Restoration by Philip T. Hansen, Registered Land Surveyor. Hansen recovered a 2-1/2" dia. iron pipe with brass cap with the following bearing trees: Red Pine 12" N44°E, 203 links; Sugar 10" S68°W, 98.5 links.

June 13, 2000: I found and accepted a 2-1/2" dia. iron pipe with 3" dia. WCD brass cap 18" above grade and marked as shown below. I found Hansen's Sugar snag 12" S72°W, 65.1 feet. I established accessories as show below and set a plastic sign post Southwest, 1 foot.

(c)(d)(e) Plan view of corner with ties to at least 4 witness monuments. If in disagreement with previously established corner, show the distances between the two corners and also indicate the ties to the disputed corner.



(i) I, Jeffrey W. Austin, Registered Land Surveyor S-1885, hereby certify that the corner location on this record was determined by me or under my direction and control and that this U.S. Public Land Survey Monument Record is correct and complete to the best of my knowledge and belief.

Signature: *Jeffrey W. Austin* Date: 7-27-00



INDEX NO. E-21

3909020000