

CERTIFIED LAND CORNER RESTORATION

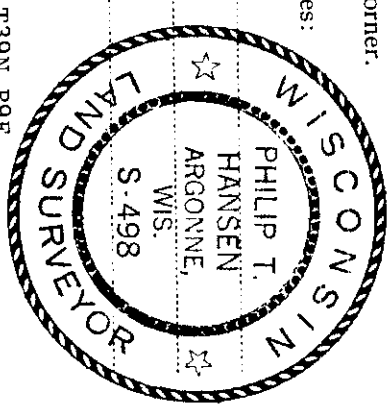
Index No. **E-19**

State of Wisconsin

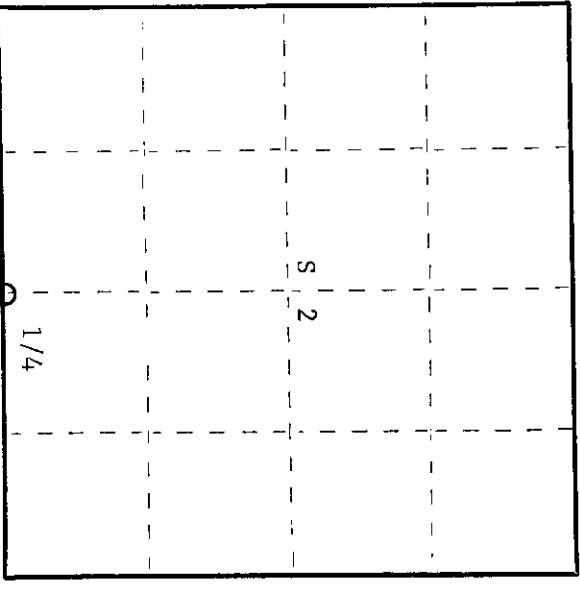
County of Oneida } ss.

I Phillip T. Hansen do hereby certify that on the 22nd day of April 1975, I found evidence of the Quarter corner of between Sections 2 and 11 Township 9 East 39 North, Range 9 East Fourth Principal Meridian, as described hereon; and that from this evidence I established a new monument and accessories as described hereon to perpetuate the original location of this corner.

Resident witnesses:



T39N R9E



○ = Corner monument restored.

History of original corner establishment:
Original corner established by Wm. E. Dougherty, Gov. Deputy Surveyor, in 1859, from which sugar maple 10" bears N31°E 5 links and birch 12" bears S4°W 6 links. Corner restored by R. Ilg, State Forester, in 1971. Recovered corner set by Allen, who is supposed to have set it while the east corner was okay. Old tamarack 8" bearing S10°W 20 links was down. Ilg set 2-1/2" iron pipe with brass cap.

Description of corner evidence found:
Recovered Ilg's 2-1/2" iron pipe with brass cap stamped - DNR SURVEY COR.

Recovered BT tamarack 7" N39°E 96 links, scribed W 1/4 BT.
This corner sets at intersection of north-south and east fence corner. S 2 1/4 S 11

R. Ilg-1971 scribed on side.

Description of monument and accessories I established to perpetuate the original location of this corner.
No new accessories established.

Dated at Rhinelanders, Wis. this 19th day of June, 1975.

Signature *Phillip T. Hansen* Title Registered Land Surveyor Registration No. S-498
(County Surveyor, Registered Land Surveyor, or other duly authorized official)

Office of Register of Deeds, County of Oneida
Instrument was filed in this office for record on the 1st day of October, 1975.
at 3:00 o'clock P.M.

Doris Verage Kuehn
(Register of Deeds)

By Deputy

3909020020

U.S. PUBLIC LAND SURVEY MONUMENT RECORD

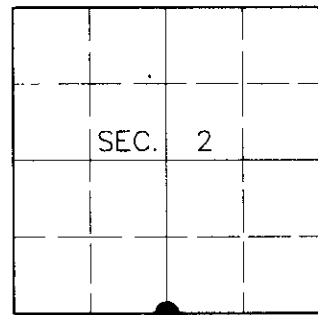
Note: This form is intended and designed to fulfill all requirements of Wisconsin Administrative Code, Chapter A-E 7.08, U.S. Public Land Survey Monument Record (3)(a)(b)(c)(d)(e)(f)(g)(h)(i). An additional sheet may be added if necessary to conform with said requirements.

(a) CORNER LOCATION

South ¼ Corner of Section 2
 Township 39 North
 Range 9 East
 Town of Sugar Camp

State Plane Coordinates

X
 Y
 Datum
 County of Oneida



(b) HISTORY OF ORIGINAL CORNER ESTABLISHMENT

Original Surveyor: William E. Daugherty

Original Bearing Trees:

Date of Survey: Commenced Sept. 22, 1863
 Completed Sept. 29, 1863

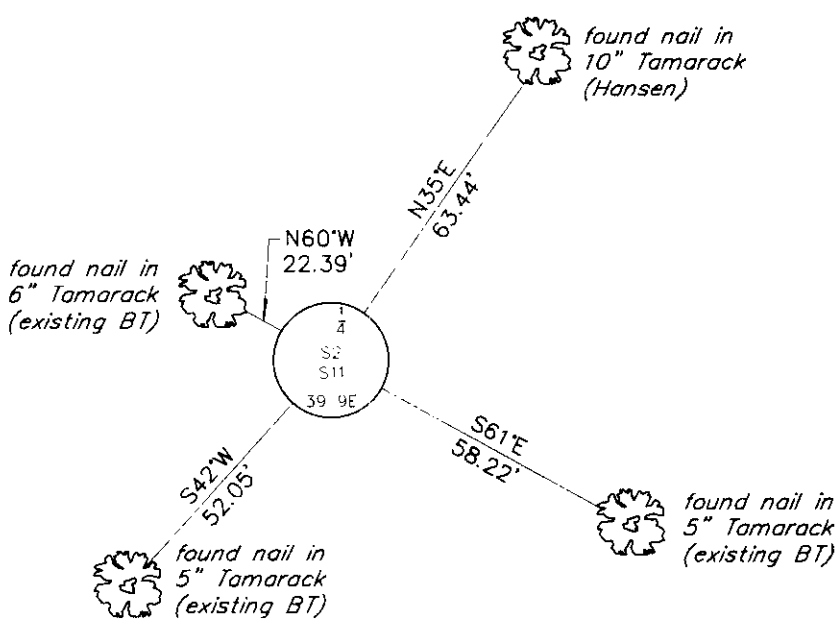
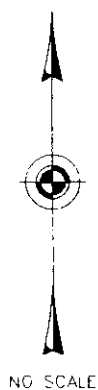
Sugar 10 N31°E, 5 links
 Birch 12 S4°W, 6 links

(b)(f)(g)(h) Description of monument found at this corner and if it was accepted, state all evidence (material, testimonial, occupational, plats, records, other monuments) used as a basis for accepting. If not accepted or if nothing was found, state evidence used as basis for establishing location. If reestablished through lost corner proportionate methods, indicate all monuments, distances and directions used to establish. Indicate type of monument and sign post found or set.

June 19, 1975: Certified Land Corner Restoration by Philip T. Hansen, Registered Land Surveyor. Hansen recovered a 2-½" dia. iron pipe with brass cap with the following bearing trees: Tamarack 7" N39°E, 96 links.

June 13, 2000: I found and accepted a 2-½" dia. iron pipe with 3" dia. DNR brass cap 22" above grade and marked as shown below. I established accessories as show below and set a plastic sign post Southeast, 1 foot.

(c)(d)(e) Plan view of corner with ties to at least 4 witness monuments. If in disagreement with previously established corner, show the distances between the two corners and also indicate the ties to the disputed corner.



(i) I, Jeffrey W. Austin, Registered Land Surveyor S-1885, hereby certify that the corner location on this record was determined by me or under my direction and control and that this U.S. Public Land Survey Monument Record is correct and complete to the best of my knowledge and belief.

 Signature Date 7-27-00



INDEX NO. E-19

3909020020