



# U.S. PUBLIC LAND SURVEY MONUMENT RECORD

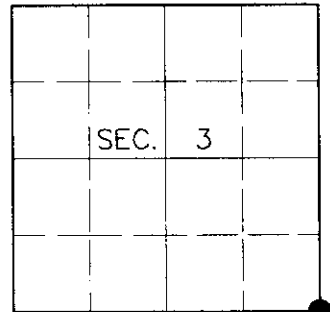
Note: This form is intended and designed to fulfill all requirements of Wisconsin Administrative Code, Chapter A-E 7.08, U.S. Public Land Survey Monument Record (3)(a)(b)(c)(d)(e)(f)(g)(h)(i). An additional sheet may be added if necessary to conform with said requirements.

**(a) CORNER LOCATION**

Southeast Corner of Section 3  
 Township 39 North  
 Range 9 East  
 Town of Sugar Camp

**State Plane Coordinates**

X  
 Y  
 Datum  
 County of Oneida



**(b) HISTORY OF ORIGINAL CORNER ESTABLISHMENT**

Original Surveyor: William E. Daugherty

Original Bearing Trees:

Date of Survey: Commenced Sept. 22, 1863  
 Completed Sept. 29, 1863

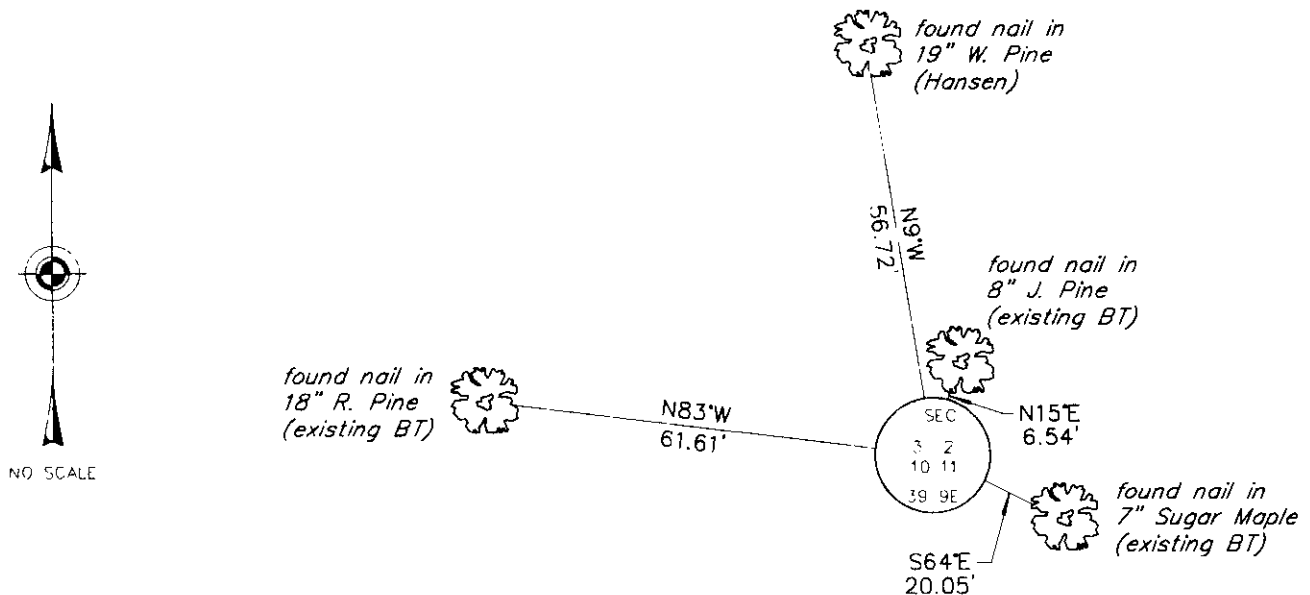
Birch 14 N4°W, 26 links  
 Sugar 10 S13°E, 26 links

(b)(f)(g)(h) Description of monument found at this corner and if it was accepted, state all evidence (material, testimonial, occupational, plats, records, other monuments) used as a basis for accepting. If not accepted or if nothing was found, state evidence used as basis for establishing location. If reestablished through lost corner proportionate methods, indicate all monuments, distances and directions used to establish. Indicate type of monument and sign post found or set.

May 15, 1975: Certified Land Corner Restoration by Philip T. Hansen, Registered Land Surveyor. Hansen recovered a 2-1/2" dia. iron pipe with brass cap with the following bearing trees: White Pine 11" N9°W, 85.4 links; Sugar Maple 9" S74°E, 62.4 links; Sugar Maple 5" S26°E, 45.0 links.

June 13, 2000: I found and accepted a 2-1/2" dia. iron pipe with 3" dia. DNR brass cap 12" above grade and marked as shown below. I found Hansen's Sugar stump 10" S74°E, 40.9 feet and his Sugar snag 6" S24°E, 29.1 feet. I established accessories as shown below and set a plastic sign post Southwest, 1 foot.

(c)(d)(e) Plan view of corner with ties to at least 4 witness monuments. If in disagreement with previously established corner, show the distances between the two corners and also indicate the ties to the disputed corner.



(i) I, Jeffrey W. Austin, Registered Land Surveyor S-1885, hereby certify that the corner location on this record was determined by me or under my direction and control and that this U.S. Public Land Survey Monument Record is correct and complete to the best of my knowledge and belief.

*(Handwritten Signature)*  
 \_\_\_\_\_  
 Signature

7-27-00  
 \_\_\_\_\_  
 Date



INDEX NO. E-17

3909030000