



# U.S. PUBLIC LAND SURVEY MONUMENT RECORD

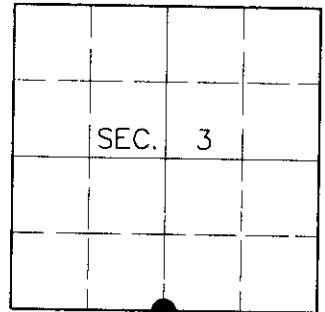
Note: This form is intended and designed to fulfill all requirements of Wisconsin Administrative Code, Chapter A-E 7.08, U.S. Public Land Survey Monument Record (3)(a)(b)(c)(d)(e)(f)(g)(h)(i). An additional sheet may be added if necessary to conform with said requirements.

**(a) CORNER LOCATION**

South ¼ Corner of Section 3  
 Township 39 North  
 Range 9 East  
 Town of Sugar Camp

**State Plane Coordinates**

X  
 Y  
 Datum  
 County of Oneida



**(b) HISTORY OF ORIGINAL CORNER ESTABLISHMENT**

Original Surveyor: William E. Daugherty

Original Bearing Trees:

Date of Survey: Commenced Sept. 22, 1863  
 Completed Sept. 29, 1863

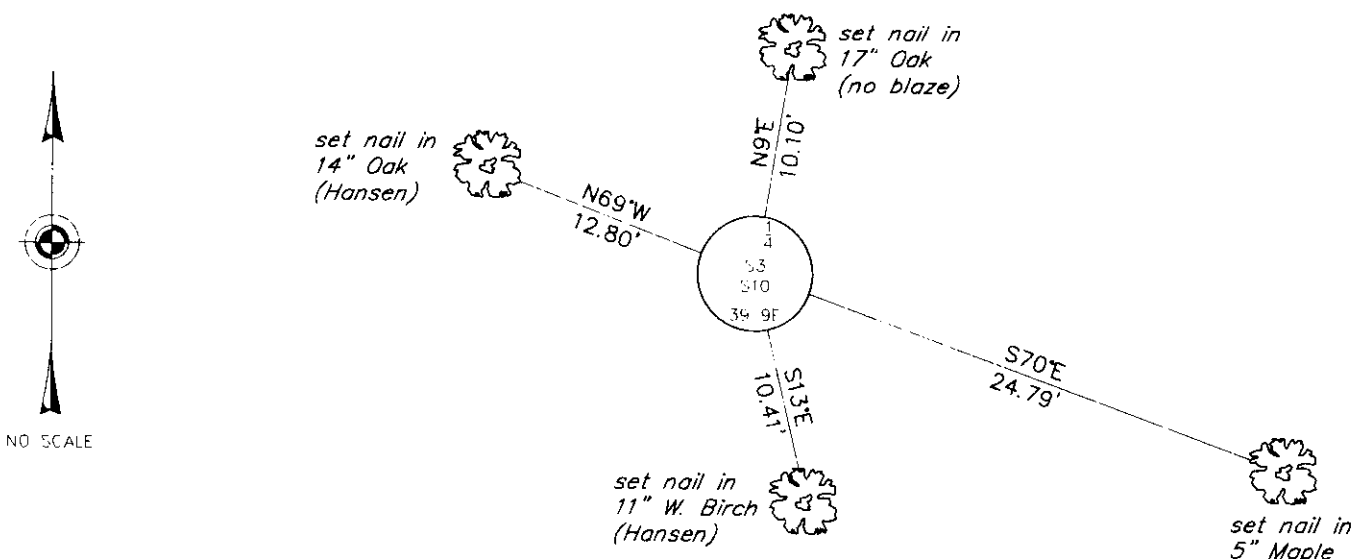
Sugar 12 S70°E, 21 links  
 Birch 8 N2°E, 19 links

(b)(f)(g)(h) Description of monument found at this corner and if it was accepted, state all evidence (material, testimonial, occupational, plats, records, other monuments) used as a basis for accepting. If not accepted or if nothing was found, state evidence used as basis for establishing location. If reestablished through lost corner proportionate methods, indicate all monuments, distances and directions used to establish. Indicate type of monument and sign post found or set.

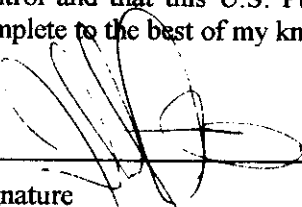
May 12, 1975: Certified Land Corner Restoration by Philip T. Hansen, Registered Land Surveyor. Hansen recovered a 2-½" dia. iron pipe with brass cap with the following bearing trees: Red Oak 12" N70°W, 18.6 links; White Birch 11" S13°E, 15.5 links; Red Pine 12" S58°E, 60.3 links.

June 12, 2000: I found and accepted a 2-½" dia. iron pipe with 3" dia. DNR brass cap 14" above grade and marked as shown below. I found Hansen's Red Pine at record location but wind-thrown. I established accessories as shown below and set a plastic sign post Southwest, 1 foot.

(c)(d)(e) Plan view of corner with ties to at least 4 witness monuments. If in disagreement with previously established corner, show the distances between the two corners and also indicate the ties to the disputed corner.



(i) I, Jeffrey W. Austin, Registered Land Surveyor S-1885, hereby certify that the corner location on this record was determined by me or under my direction and control and that this U.S. Public Land Survey Monument Record is correct and complete to the best of my knowledge and belief.

Signature  Date 7-27-00



INDEX NO. E-15

3909030020