

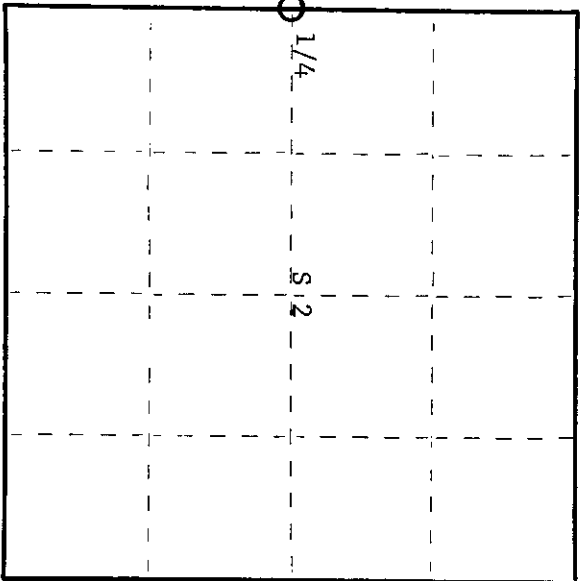
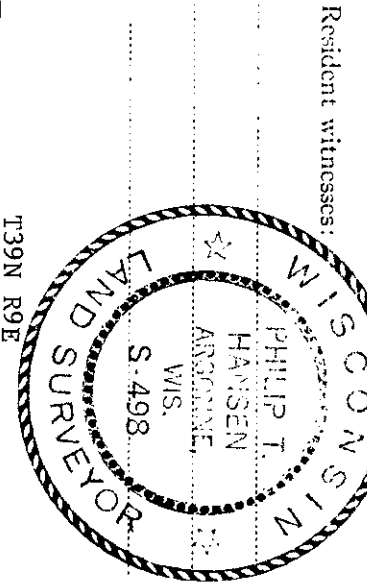
CERTIFIED LAND CORNER RESTORATION

Index No. **C-17**

3909032000

State of Wisconsin }
County of Oneida } ss.

I Philip T. Hansen, do hereby certify that on the 6th day of May, 19 75, I found evidence of the Quarter between corner of Sections 2 and 3 Township 39, North, Range 9 East, Fourth Principal Meridian, as described hereon; and that from this evidence I established a new monument and accessories as described hereon to perpetuate the original location of this corner.



○ = Corner monument restored.

History of original corner establishment:

Original corner established by Wm. E. Dougherty, Govt. Deputy Surveyor, in 1863 from which white pine 36" bears S72°E, 11 links and yellow pine 18" bears N67°W, 22 links. Corner re-established by R. Ilg, State Surveyor, in 1971. Set corner 39.979 chains north of established SW corner of Section 2, and 27.546 chains south of NW corner from which red oak 18" bears S43°E, 0.568 chains and red oak 11" bears N27°E, 0.949 chains.

Description of corner evidence found:

Recovered R. Ilg's 2-1/2" iron pipe w/brass cap stamped - DNR Survey 1/4 Corner
Recovered: Red oak 18" S43°E 58 links scribed "W"-1/4 BT S/S
Red oak 10" N27°E 96 links scribed "W"-1/4 BT. 3/2

T39N R9E
R. Ilg on side of cap

Description of monument and accessories I established to perpetuate the original location of this corner.

Dated at Rhineland, Wis., this 30th day of June, 19 75

Signature: Philip T. Hansen Title: Registered Land Surveyor Registration No. S-498
(County Surveyor, Registered Land Surveyor, or other duly authorized official)

Office of Register of Deeds, County of Oneida
Instrument was filed in this office for record on the 1st day of October, 19 75
at 3:00 o'clock P. M.

Doree Strang Kuehn
(Register of Deeds)

By: _____ Deputy

U.S. PUBLIC LAND SURVEY MONUMENT RECORD

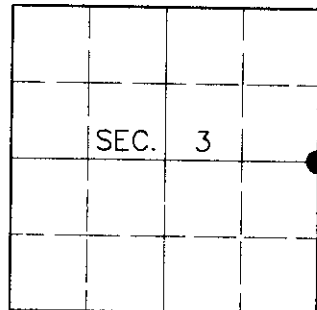
Note: This form is intended and designed to fulfill all requirements of Wisconsin Administrative Code, Chapter A-E 7.08, U.S. Public Land Survey Monument Record (3)(a)(b)(c)(d)(e)(f)(g)(h)(i). An additional sheet may be added if necessary to conform with said requirements.

(a) CORNER LOCATION

East 1/4 Corner of Section 3
 Township 39 North
 Range 9 East
 Town of Sugar Camp

State Plane Coordinates

X
 Y
 Datum
 County of Oneida



(b) HISTORY OF ORIGINAL CORNER ESTABLISHMENT

Original Surveyor: William E. Daugherty

Original Bearing Trees:

Date of Survey: Commenced Sept. 22, 1863
 Completed Sept. 29, 1863

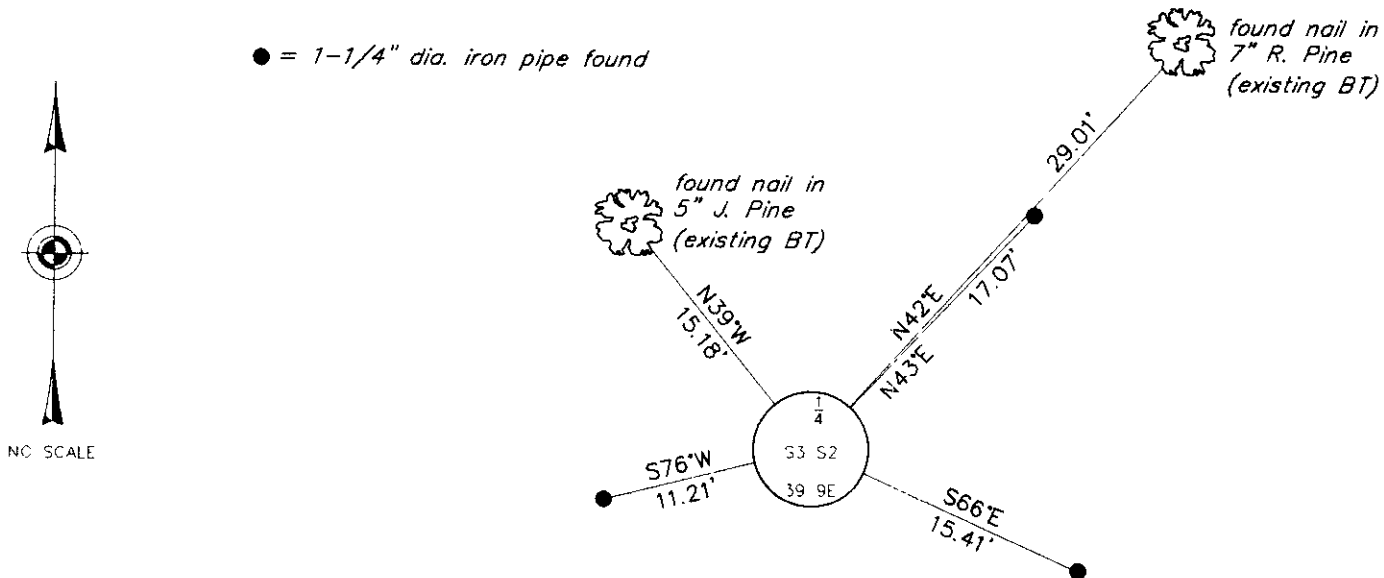
W. Pine 36 S72°E, 11 links
 Y. Pine 18 N67°W, 22 links

(b)(f)(g)(h) Description of monument found at this corner and if it was accepted, state all evidence (material, testimonial, occupational, plats, records, other monuments) used as a basis for accepting. If not accepted or if nothing was found, state evidence used as basis for establishing location. If reestablished through lost corner proportionate methods, indicate all monuments, distances and directions used to establish. Indicate type of monument and sign post found or set.

June 30, 1975: Certified Land Corner Restoration by Philip T. Hansen, Registered Land Surveyor. Hansen recovered a 2-1/2" dia. iron pipe with brass cap with the following bearing trees: Red Oak 18" S43°E, 58 links; Red Oak 10" N27°E, 96 links.

June 13, 2000: I found and accepted a 2-1/2" dia. iron pipe with 3" dia. DNR brass cap 18" above grade and marked as shown below. I found Hansen's Oak stump 12" N30°E, 63.1 feet and his Oak stump 18" S41°E, 38.2 feet. I established accessories as show below and set a plastic sign post Southeast, 1 foot.

(c)(d)(e) Plan view of corner with ties to at least 4 witness monuments. If in disagreement with previously established corner, show the distances between the two corners and also indicate the ties to the disputed corner.



(i) I, Jeffrey W. Austin, Registered Land Surveyor S-1885, hereby certify that the corner location on this record was determined by me or under my direction and control and that this U.S. Public Land Survey Monument Record is correct and complete to the best of my knowledge and belief.

Signature: *[Handwritten Signature]* Date: 7-27-00



INDEX NO. C-17

3909032000