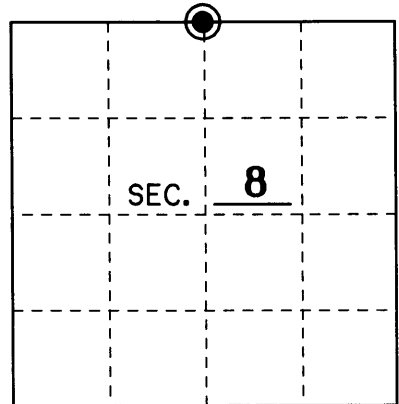


U.S. PUBLIC LAND SURVEY MONUMENT RECORD

Note: This form is intended and designed to fulfill all requirements of Wisconsin Administrative Code, Chapter A-E 7.08 U.S. Public Land Monument Record (3)(a)(b)(c)(d)(e)(f)(g)(h)(i). An additional sheet may be added if necessary to conform with said requirements.

(a) CORNER LOCATION: North County or State Plane Coordinates
1/4 Corner of Section 8 Northing _____
 Township 39 North Easting _____
 Range 9 East Datum Base _____
 Township/City Sugar Camp County of Oneida



(b) HISTORY OF ORIGINAL CORNER ESTABLISHMENT Original B.T.'s
 Original Surveyor: William Daugherty 7" Birch N 29°W 26 Lks.
 Date of Survey: September, 1863 10" Y.Pine S 53°E 16 Lks.

(b)(f)(g)(h) Description of monument found at this corner and if it was accepted, state all evidence (material, testimonial, occupational, plats, records, other monuments) used as a basis for accepting. If not accepted or if nothing was found, state evidence used as basis for establishing location. If reestablished through lost corner proportionate methods, indicate all monuments, distances and directions used to establish. Indicate type of monument and sign post found or set.

September, 1863: William Daugherty set a wood post for the original corner in his survey of T 39 N, R 9 E. He also made two B.T.'s as noted above.

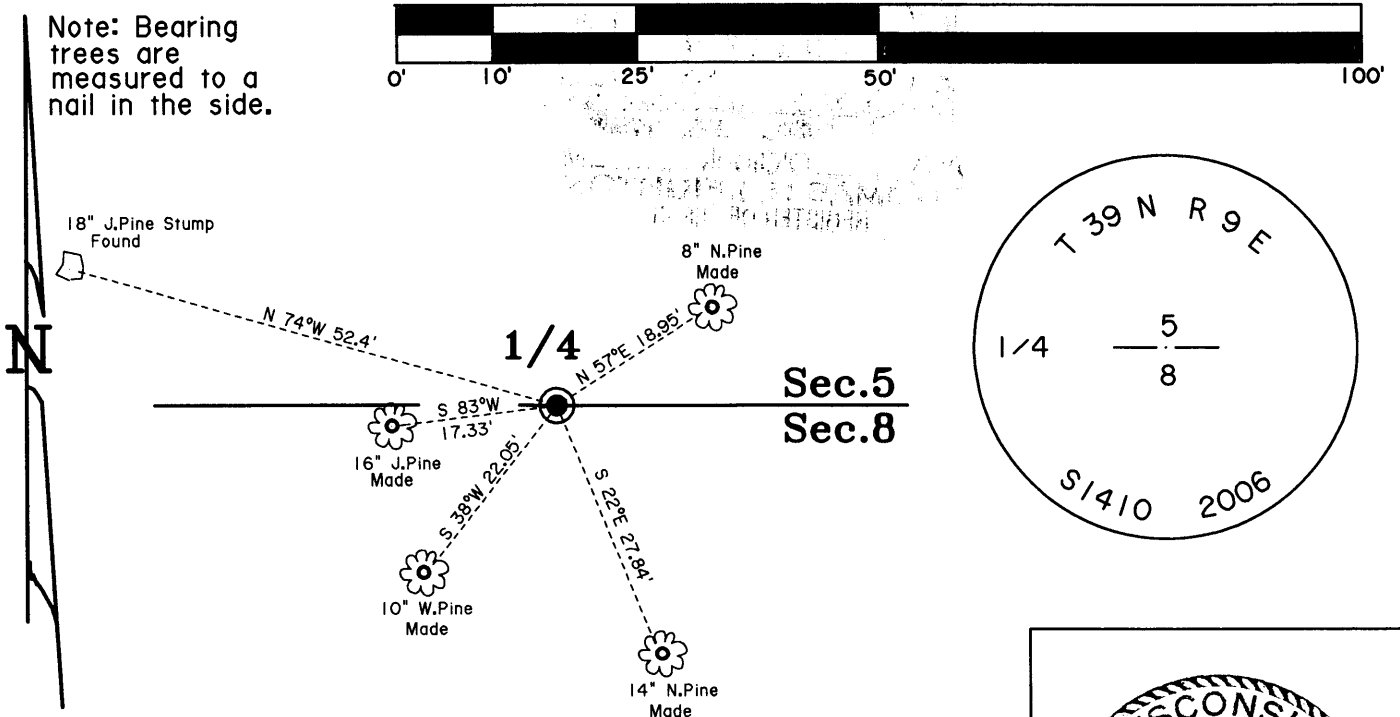
1938: Wisconsin Valley Improvement set a 2" iron pipe for the 1/4 corner in between section corners at 37.064 chains each way.

12-1983: Vissers subdivided Section 5 and in that process he traversed to the N1/4 of Sec.8 and found a 2" iron pipe and uses it for his Section Subdivision. He also says B.T.'s are gone but he had the wrong distances.

6-01-2006: I, James L. Will, found a 2 iron pipe lying on its side at the 1/4 position. I found Visser's old traverse nails and turned his angle and distance to reset the 1/4 in the old hole. I replaced the iron pipe with a 2" x 36" Oneida County aluminum monument stamped to identify the corner as shown below. I found one B.T. and made four new ones as shown below. I blazed the trees and set a sign post 1 foot North.

(c)(d)(e) Plan view of the corner with ties to at least 4 witness monuments. If in disagreement with previously established corner, show the distances between the two corners and also indicate the ties to the disputed.

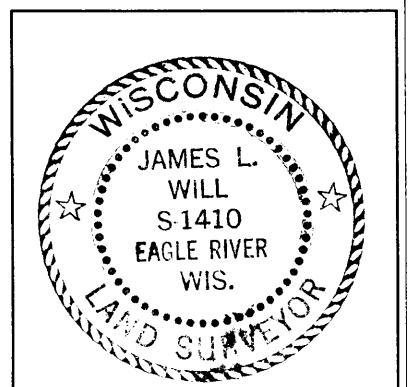
SCALE: 1" = 20'



(i) I, James L. Will R.L.S. No. 1410
 hereby certify that the corner location on this record was determined by me or under my direction and control and that this U.S. Public Land Survey Monument Record is correct and complete to the best of my knowledge and belief.

Signature *James L. Will*

Date 6-06-2006



3909050020

Index No. E-7