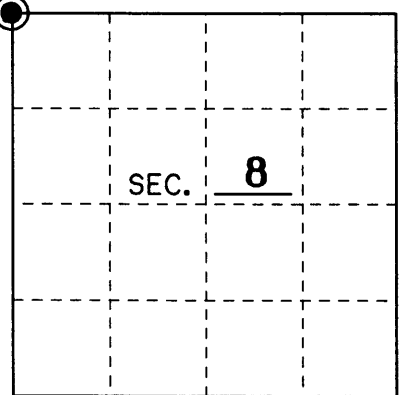


U.S. PUBLIC LAND SURVEY MONUMENT RECORD

Note: This form is intended and designed to fulfill all requirements of Wisconsin Administrative Code, Chapter A-E 7.08 U.S. Public Land Monument Record (3)(a)(b)(c)(d)(e)(f)(g)(h)(i). An additional sheet may be added if necessary to conform with said requirements.

(a) CORNER LOCATION: Northwest County or State Plane Coordinates
 Section Corner of Section 8 Northing
 Township 39 North Easting
 Range 9 East Datum Base
 Township/City Sugar Camp County of Oneida



(b) HISTORY OF ORIGINAL CORNER ESTABLISHMENT Original B.T.'s
 Original Surveyor: William Daugherty 7" Birch S 37°W 42 Lks.
 Date of Survey: September, 1863 7" Birch S 57°E 29 Lks.

(b)(f)(g)(h) Description of monument found at this corner and if it was accepted, state all evidence (material, testimonial, occupational, plats, records, other monuments) used as a basis for accepting. If not accepted or if nothing was found, state evidence used as basis for establishing location. If reestablished through lost corner proportionate methods, indicate all monuments, distances and directions used to establish. Indicate type of monument and sign post found or set.

September, 1863: William Daugherty set a wood post for the original corner in his survey of T 39 N, R 9 E. He also made two B.T.'s as noted above.

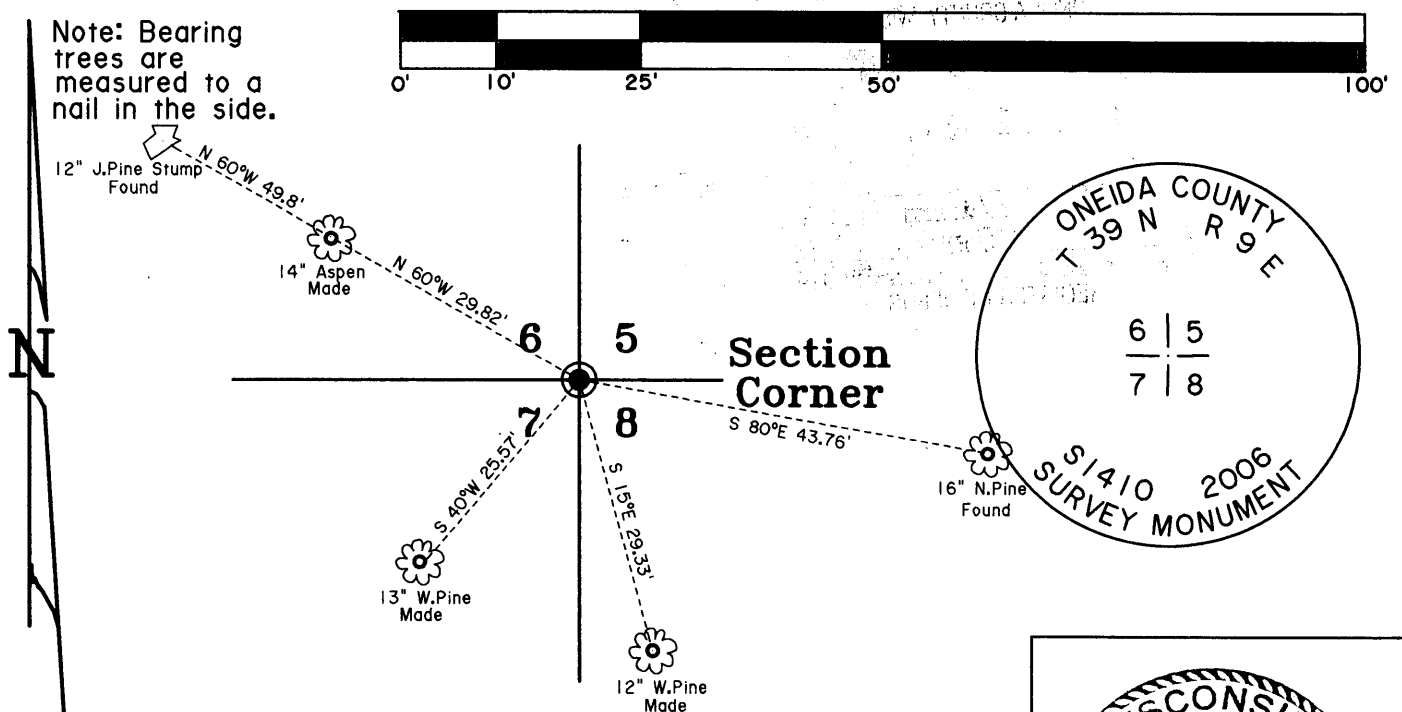
1938: Wisconsin Valley Improvement found old post and replaced it with a 2" iron pipe. They also made two new B.T.'s a 5" N.Pine S 80°E 0.661 chains and a 12" J.Pine N 60°W 0.748 Chains.

12-1983: Vissers found a 2" iron pipe in his survey and used it as the Section corner in his survey. He also found both B.T.'s in good shape.

6-01-2006: I, James L. Will, of Eagle Landmark Surveying found a 2" iron pipe 2 feet above the ground. I also found both of Wisconsin Valley Improvement's B.T.'s as shown below. I replaced the iron pipe with a 2" x 36" Oneida County aluminum monument stamped to identify the corner as shown below. I also made three new B.T.'s as shown below. I set a sign post 1 foot North.

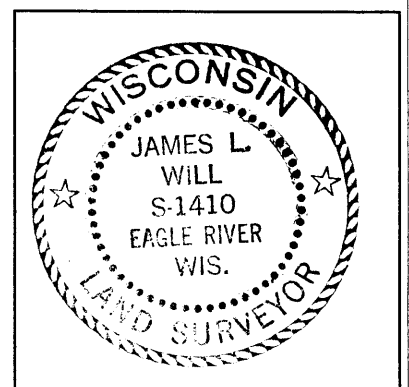
(c)(d)(e) Plan view of the corner with ties to at least 4 witness monuments. If in disagreement with previously established corner, show the distances between the two corners and also indicate the ties to the disputed.

SCALE: 1" = 20'



(i) I, James L. Will R.L.S. No. 1410
 hereby certify that the corner location on this record was determined by me or under my direction and control and that this U.S. Public Land Survey Monument Record is correct and complete to the best of my knowledge and belief.

Signature *James L. Will* Date 6-06-2006



Index No. E-5

3909060000