

# U.S. PUBLIC LAND SURVEY MONUMENT RECORD

Note: This form is intended and designed to fulfill all requirements of the Wisconsin Administrative Code, Chapter A-E 7.08 U.S. Public Land Monument Record (3)(a)(b)(c)(d)(e)(f)(g)(h)(i). An additional sheet may be added if necessary to conform with said requirements.

(a) CORNER LOCATION:  
 East Quarter Corner of Section 6  
 Township 39 North  
 Range 9 East  
 Town of Sugar Camp  
 County of Oneida

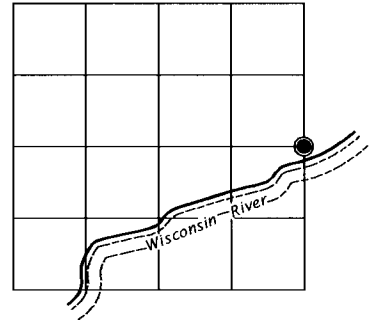
WISCRS - Oneida County  
 North: 259226.659 USft  
 East: 265594.573 USft  
 Latitude: 45° 53' 48.77389" N  
 Longitude: 89° 24' 16.76741" W  
 Datum: NAD 83(2011)  
 GNSS Method: RTK - Offset  
 GNSS Control: WISCRS VRS  
 Record North: 259226.578 USft  
 Record East: 265594.652 USft  
 Record Datum: NAD 83(1991)

MAY 23 2017

AT \_\_\_\_\_ O'CLOCK \_\_\_\_\_ M  
 KYLE J. FRANSON  
 REGISTER OF DEEDS

(RECORDING AREA)

SECTION 6



(b) HISTORY OF ORIGINAL CORNER ESTABLISHMENT

Original Surveyor: William E. Dougherty  
 Date of Survey: Commenced September 22, 1863  
 Completed September 29, 1863  
 Original B.T.'S: Spruce 10" S 16°E 13 lks.  
 Fir 8" S 64°W 23 lks.

(f)(g)(h) DESCRIPTION OF MONUMENT FOUND AT THIS CORNER AND IF IT WAS ACCEPTED, STATE ALL EVIDENCE (MATERIAL, TESTIMONIAL, OCCUPATIONAL, PLATS, RECORD, OTHER MONUMENTS) USED AS A BASIS FOR ESTABLISHING LOCATION. IF NOT ACCEPTED OR IF NOTHING WAS FOUND, STATE EVIDENCE USED AS BASIS FOR ESTABLISHING LOCATION. IF REESTABLISHED THROUGH LOST CORNER PROPORTIONATE METHODS, INDICATE ALL MONUMENTS, DISTANCES AND DIRECTIONS USED TO ESTABLISH. INDICATE TYPE OF MONUMENT AND SIGN POST FOUND OR SET.

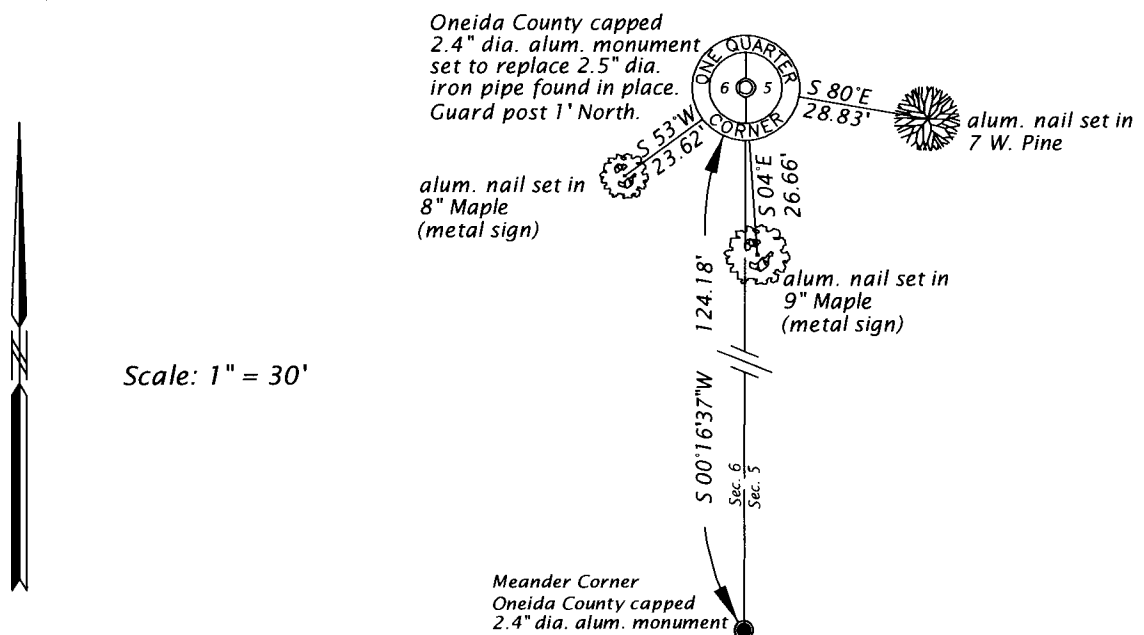
1939 - R. W. Smith, WVIC Surveyor, maps filed as B2568 and B2569 in county surveyors office describes corner as "found post set pipe" refenced by bearing trees: 18" W. Pine S32°W, 27.0 feet; and 21" W. Pine S60°E, 39.0 feet.

December 21, 1977 - Stuart L. Foltz, RLS No. 1170, map of survey filed as B962 in county surveyor's office, identifies corner monumented by a found 2" iron pipe, referenced by "old pine stump, S34°W, 27.3 feet and 123.99 feet north of the meander corner near north bank of Wisconsin River.

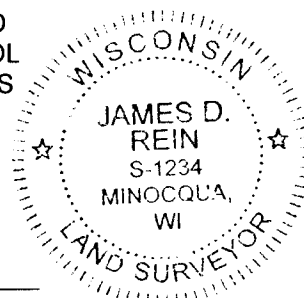
February 20, 2017 - James D. Rein, Professional Land Surveyor No. 1234, we recovered a 2.5" o.d. iron pipe in a harmonious position with above record, which is accepted as a perpeuation of the original corner and we replace it with a capped aluminum monument and made reference ties to new bearing trees and the meander corner as shown in the plan.

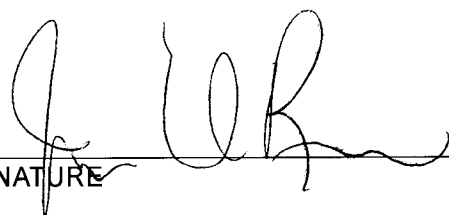
The coordinate value shown has been verified by at least one of the following methods: 1) comparison to a previously GPS determined published value; 2) the value is the average of two or more GPS observations at a markedly different time; 3) one or more distances were measured back to the GPS observed corner from temporary GPS observed offset locations.

(c)(d)(e) PLAN VIEW OF CORNER WITH TIES TO AT LEAST 4 WITNESS MONUMENTS. IF IN DISAGREEMENT WITH PREVIOUSLY ESTABLISHED CORNER, SHOW THE DISTANCE BETWEEN THE TWO CORNERS AND ALSO INDICATE THE TIES TO THE DISPUTED CORNER.



(i) I, JAMES D. REIN, PROFESSIONAL LAND SURVEYOR NO. S-1234 HEREBY CERTIFY THAT THE CORNER LOCATION ON THIS RECORD WAS DETERMINED BY ME OR UNDER MY DIRECTION AND CONTROL AND THAT THIS U.S. PUBLIC LAND SURVEY MONUMENT RECORD IS CORRECT AND COMPLETE TO THE BEST OF MY KNOWLEDGE AND



SIGNATURE  DATE 5-12-17

INDEX NO. C - 5  
 3909062000