

State of Wisconsin

County of Oneida } ss.

I James L. Will do hereby

certify that on the 26th day

of April 19 85 I found

evidence of the Northeast

corner of Section 18

Township 39 North, Range

9 East, Fourth Principal Meridian,

as described hereon; and that from this evidence

I established a new monument and accessories

as described hereon to perpetuate the original

location of this corner.

Resident witnesses:

Thomas A Boettcher

U. S. Public Land Survey Monument Record

Index No. J-5

History of original corner establishment:

Original corner was established in the course of the subdivision of T 39 N, R 9 E by William E. Daugherty in 1863.

Original Bearing Trees: 10" W. Pine S 43° W 13 lks.

12" Hem. S 81° E 22 lks.

Description of corner evidence found:

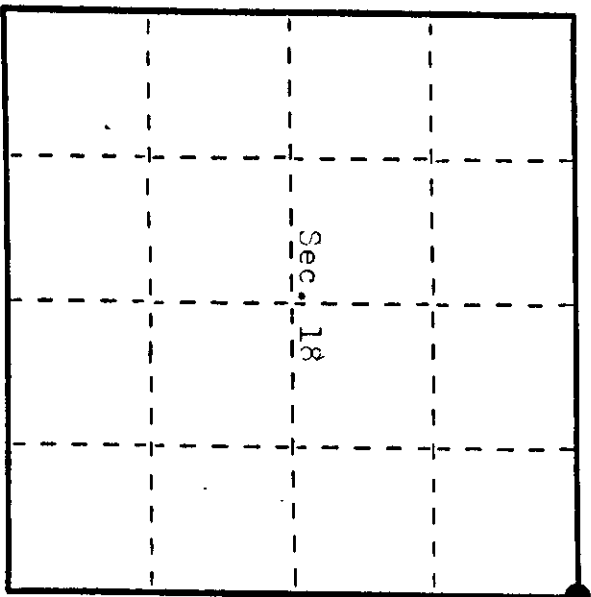
Found 1-1/2" iron pipe next to scribed 4"x4" wood post and the following Bearing Trees:

- 10" Oak N 27° W 20.21 feet to nail in side
- 12" Oak S 15° W 11.35 feet to a nail in side
- 12" W. Pine S 26° -30' E 35.50 feet to nail in side
- 10" W. Pine N 39° -22' W 110.35 feet to nail in side

Description of monument and accessories I established to perpetuate the original location of this corner.

Set 2"x30" Aluminum magnetic capped monument in place of 1-1/2" iron pipe and reset 4"x4" wood post 1.0 feet Northeast of monument.

See drawing on reverse.



● = Corner monument restored.

Dated at Eagle River Wis., this 29th day of April, 19 85

Signature James L. Will Title Registered Land Surveyor Registration No. 1410

Office of Registrar of Deeds, County of Oneida, I hereby certify that the within instrument was filed in this office for record on the 19 day of April, 19 85 at 10 o'clock P.M.

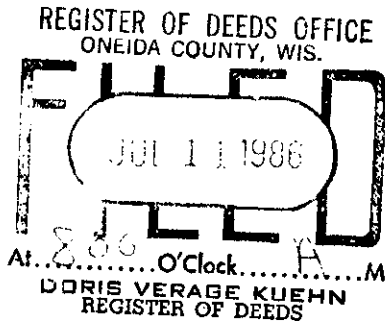
(Registrar of Deeds)

By Deputy

3909070000

Describe any material discrepancy between the location of the corner as restored or reestablished and the location of that corner as previously restored or reestablished by distance and direction. Show the discrepancy on the plan view drawing under (d), above. Show the distances between the corner as previously restored or reestablished and (1) the corner as restored or reestablished, and (2) to at least 2 of the witness monuments shown on the drawing in (d), above.

None. See drawing below.

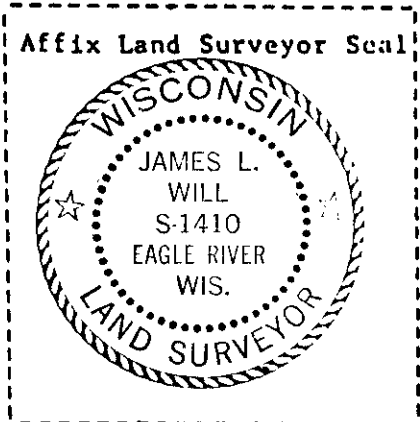
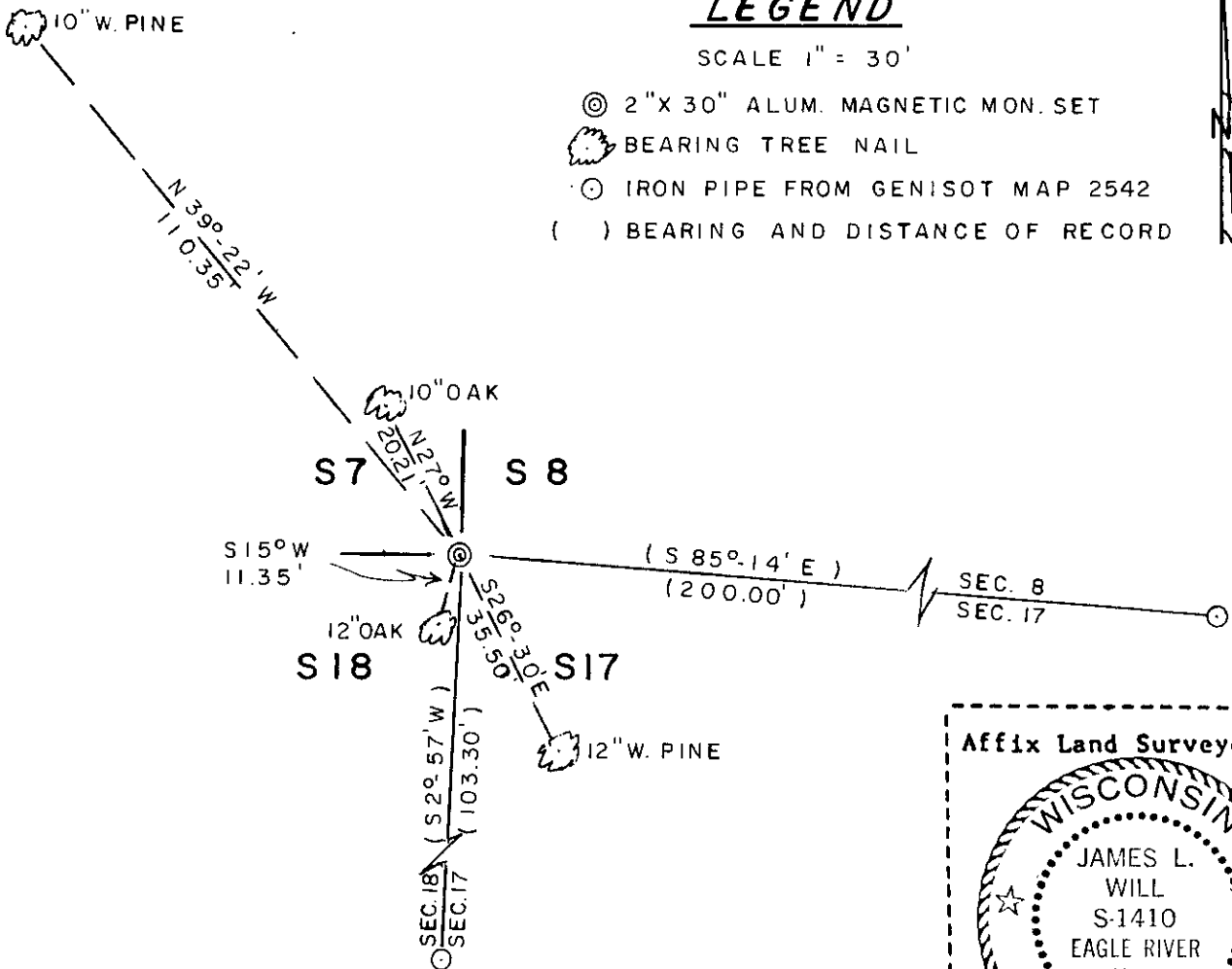


Was the corner restored through acceptance of (1) an obliterated evidence location, or, (2) a found perpetuated location?

Corner was restored through acceptance of a found perpetuated location.

Was the corner reestablished through lost corner proportionate methods? If so, show the method, including the directions and distances to other public land survey corners used as evidence or used for proportioning in determining the corner location?

No. See drawing below.



James L. Will, RLS #1410

(Type or print name) certify that the corner location shown on this record was determined by me or under my direction and control and that this U.S. Public Land Survey Monument Record is correct and complete to the best of my knowledge and belief.

James L. Will
Signature

May 2nd, 1985
Date

U.S. PUBLIC LAND SURVEY MONUMENT RECORD

Index No. 7-6

State of Wisconsin

County of Oneida } ss.

I John H. Fisher, do hereby certify that on the 24 day of August, 1984, I found evidence of the Northeast corner of Section 18 Township 39 North, Range 9 East, Fourth Principal Meridian, as described hereon; and that from this evidence I established a new monument and accessories as described hereon to perpetuate the original location of this corner.

Resident witnesses: None

History of original corner establishment: The original government survey was performed by William E. Daugherty, Deputy Surveyor in September, 1863. Wood post set:

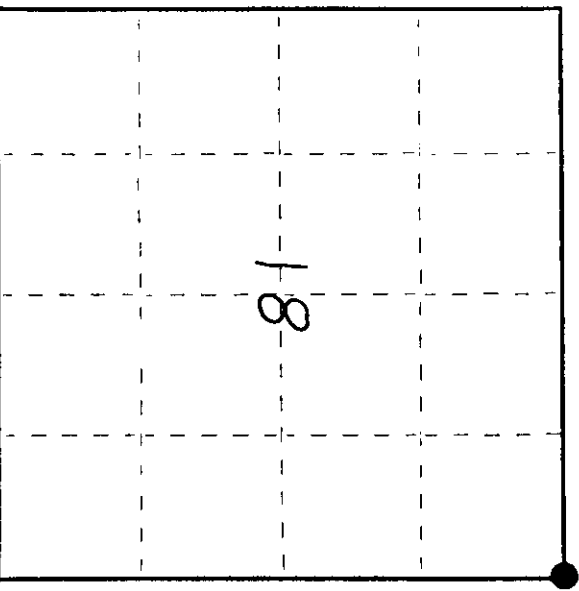
White Pine 10" S43°W 13 lks
Hemlock 12" S81°E 22 lks

Description of corner evidence found: 1-1/2" iron pipe

2" iron pipe S45°E 36 feet
Oak 10" N27°W 20.21 feet
Oak 7" S15°W 11.35 feet
White Pine 12" S26°30'E 35.50 feet

Description of monument and accessories I established to perpetuate the original location of this corner. Corner in good condition Set nail in:

White Pine 10" N39°22'W 110.35 feet



● = Corner monument restored.

Dated at Minocqua, Wis., this 24th day of May, 1984.

Signature: [Handwritten Signature] Title: Registered Land Surveyor Registration No. S-836 (County Surveyor, Registered Land Surveyor, or other duly authorized official)

Office of Register of Deeds, County of Oneida. I hereby certify that the within instrument was filed in this office for record on the 20th day of June, 1984 at 8:00 o'clock P.M.

By: [Handwritten Signature] Deputy (Register of Deeds)

3909070000

