

State of Wisconsin

County of Oneida } ss.

I, James L. Will, do hereby certify that on the 26th day of April, 1985, I found evidence of the North 4 corner of Section 18 Township 39 North, Range 9 East, Fourth Principal Meridian, as described hereon; and that from this evidence I established a new monument and accessories as described hereon to perpetuate the original location of this corner.

Resident witnesses:

Thomas A. Boettcher

U. S. Public Land Survey Monument Record

Index No. J-3

History of original corner establishment:

Original corner was established in the course of the subdivision of T 39 N, R 9 E by William E. Daugherty in 1803.

Original Bearing Trees: 7" Aspen S 14° W 32 lks. 12" Y. Pine N 9° W 17 lks.

Description of corner evidence found:

Found 2" iron pipe which has been used in previous surveys as the North 4 corner. Found the following Bearing Trees:

- 10" W. Pine N 53° W 15.38 feet to nail in side
- 8" Dead Oak S 46° E 17.60 feet to center
- 10" W. Birch N 69° E 11.89 feet to nail in side
- 20" Pine stp. South 39.80 feet to face
- 14" Pine stp. N 6° W 17.20 feet to face

Description of monument and accessories I established to perpetuate the original location of this corner.

Set 2"x30" Aluminum magnetic capped monument in place of the 2" iron pipe and made the following new Bearing Trees:

- 7" W. Pine N 15° E 18.20 feet to nail in side
- 5" Db1. Map. S 30° E 17.95 feet to nail in side

See drawing on reverse.

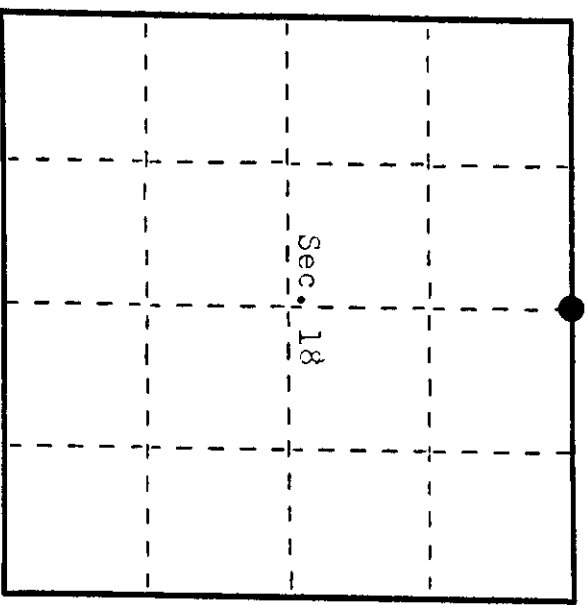
Dated at Eagle River, Wis., this 29th day of April, 1985

Signature James L. Will, Title Registered Land Surveyor Registration No. 1410 (County Surveyor, Registered Land Surveyor, or other duly authorized official)

Office of Register of Deeds, County of Oneida, I hereby certify that the within instrument was filed in this office for record on the 29th day of April, 1985 at 10:00 o'clock P.M.

(Register of Deeds)

By Deputy



● = Corner monument restored.

3909070020

Describe any material discrepancy between the location of the corner as restored or reestablished and the location of that corner as previously restored or reestablished by distance and direction. Show the discrepancy on the plan view drawing under (d), above. Show the distances between the corner as previously restored or reestablished and (1) the corner as restored or reestablished, and (2) to at least 2 of the witness monuments shown on the drawing in (d), above.

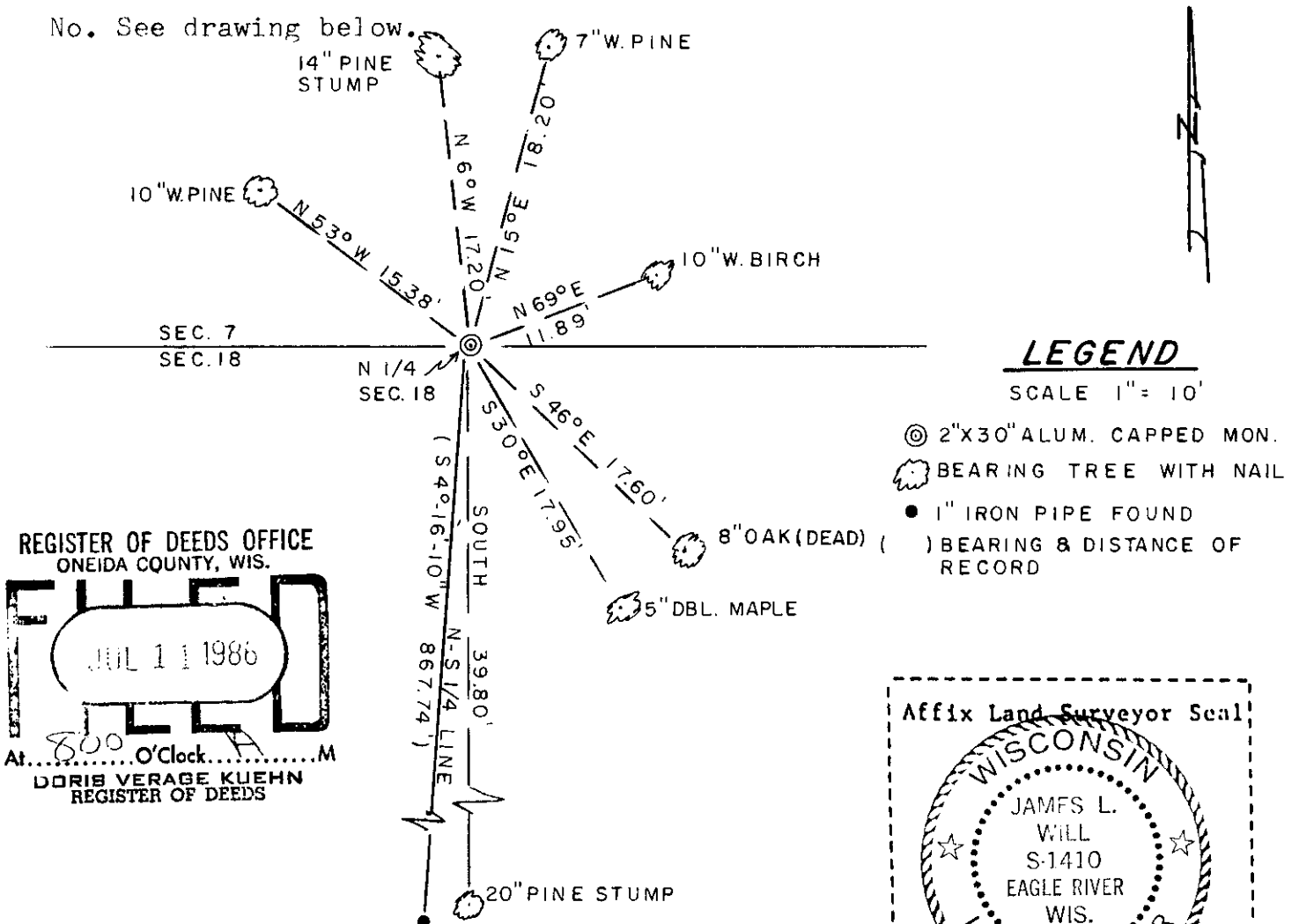
None. See drawing below.

Was the corner restored through acceptance of (1) an obliterated evidence location, or, (2) a found perpetuated location?

Corner was restored through acceptance of a found perpetuated location.

Was the corner reestablished through lost corner proportionate methods? If so, show the method, including the directions and distances to other public land survey corners used as evidence or used for proportioning in determining the corner location?

No. See drawing below.

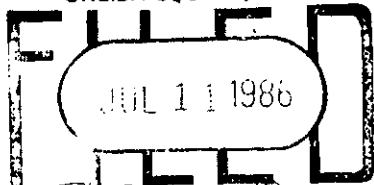


LEGEND

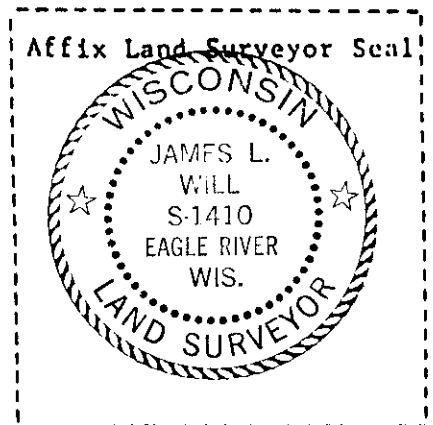
SCALE 1" = 10'

- ⊙ 2"X30" ALUM. CAPPED MON.
- 🌳 BEARING TREE WITH NAIL
- 1" IRON PIPE FOUND
- () BEARING & DISTANCE OF RECORD

REGISTER OF DEEDS OFFICE
ONEIDA COUNTY, WIS.



At 8:00 O'Clock A.M.
DORIS VERAGE KUEHN
REGISTER OF DEEDS



I, James L. Will, RLS # 1410
(type or print name) certify that the corner location shown on this record was determined by me or under my direction and control and that this U.S. Public Land Survey Monument Record is correct and complete to the best of my knowledge and belief.

James L. Will
Signature

April 29th, 1985
Date