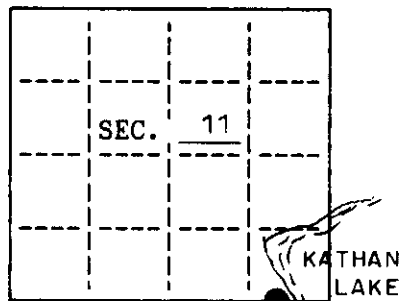


U. S. PUBLIC LAND SURVEY MONUMENT RECORD

Note: This form is intended and designed to fulfill all requirements of Wisconsin Administrative Code, Chapter A-8 7.08 U.S. Public Land Survey Monument Record (3)(a)(b)(c)(d)(e)(f)(g)(h)(i). An additional sheet may be added if necessary to conform with said requirements.

(a) CORNER LOCATION: State Plane Coordinates
 Meander corner of Sec. 11&14 X Not available
 Township 39 North Y Not available
 Range 9 East Datum Base _____
 Town/City Sugar Camp County of Oneida



(b) HISTORY OF ORIGINAL CORNER ESTABLISHMENT
 Original Surveyor: Willam E. Daugherty Original B.T.'S
 Date of Survey: Commenced Sept. 22, 1863 7" Tamarack N 71° W 22 lks.
 7" Tamarack S 61° E 20 lks.
 Completed Sept. 29, 1863

(b)(f)(g)(h) Description of monument found at this corner and if it was accepted, state all evidence (material, testimonial, occupational, plats, records, other monuments) used as a basis for accepting. If not accepted or if nothing was found, state evidence used as basis for establishing location. If reestablished through lost corner proportionate methods, indicate all monuments, distances and directions used to establish. Indicate type of monument and sign post found or set.

May, 1917: Vaughn set corner & made B.T.'s: 14" Tam. S27°E 7.26' & 18" W. Pine N41°W 18.15'
April, 1950: R.R. Wincentzen found & used a 6"x6" wood post for the corner & made new B.T.'s
 20" W. Pine S52°E 17.49' & 18" W. Pine S25°W 39.60'

1972: Robert Ilg set a WCD iron pipe brass cap in place of old wood post & found remains of northwest original B.T. Also found Wincentzen's B.T.'s now stumps.

Feb. 26, 1992: I, Michael E. Weber, found the WCD iron pipe brass cap & pine stmp S 25° W 40.2' measured to the center.

Found the following B.T.'s measured to a nail in the side:

13" W. Pine S 15° W 27.51'
 10" Spruce S 84° W 24.53'

Made the following new B.T.'s measured to a nail in the side :

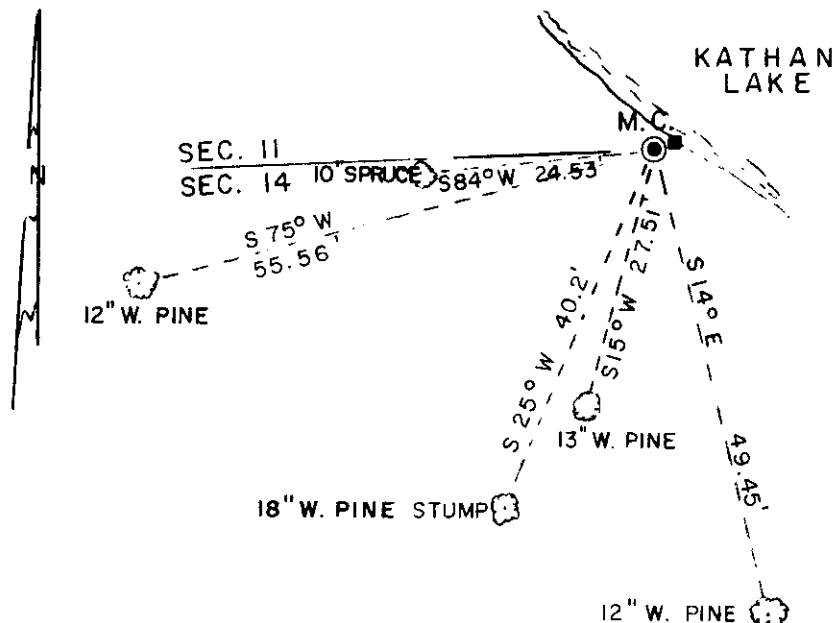
12" W. Pine S 75° W 55.56'
 12" W. Pine S 14° E 49.45'

Set a plastic sign post northeast of the corner.

(c)(d)(e) Plan view of corner with ties to at least 4 witness monuments. If in disagreement with previously established corner, show the distances between the two corners and also indicate the ties to the disputed.

LEGEND

SCALE : 1" = 20'

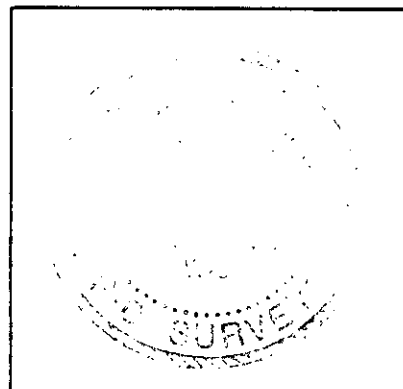


- W.C.D. IRON PIPE BRASS CAP FOUND IN PLACE
- BEARING TREE MEASURED TO A NAIL IN THE SIDE
- PLASTIC SIGN POST SET

(i) I, Michael E. Weber, R.L.S. #2070
 hereby certify that the corner location on this record was determined by me or under my direction and control and that this U.S. Public Land Survey Monument Record is correct and complete to the best of my knowledge and belief.

Michael E. Weber
 Signature

3/3/92
 Date



INDEX NO. J-2021

3909110006

U.S. PUBLIC LAND SURVEY MONUMENT RECORD

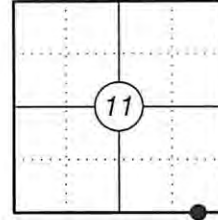
This form is intended and designed to fulfill all requirements of Wisconsin Administrative Code, Chapter A-E 7.08 U.S. Public Land Survey Monument Record (3) (a)(b)(c)(d)(e)(f)(g)(h)(i). An additional sheet may be added if necessary to confirm with said requirements.

Oneida County
Land Information Office
Filed
4/13/2026

(a) Corner Location:

Meander Corner Section 11
Township 39 North
Range 9 East
Town of Sugar Camp
County of Oneida

Corner ID: 3909110006



(b) History of Original Corner:

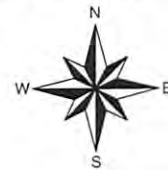
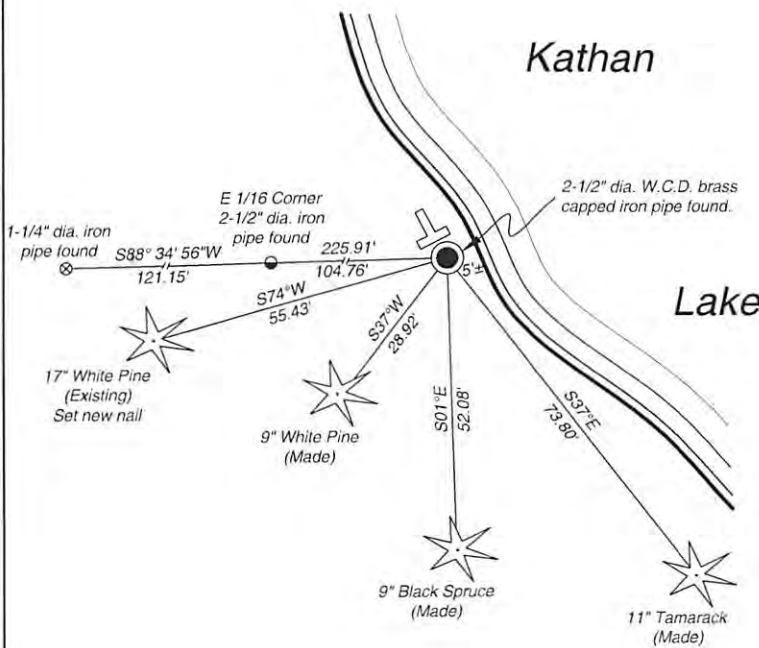
For corner history, see previous U.S. Public Land Survey Monument Record by Michael E. Weber, dated March 3, 1992.

(f)(g)(h) Description of monument found at this corner and if it was accepted, state all evidence (material, testimonial, occupational, plats, records, other monuments) used as a basis for establishing location. If reestablishing through lost corner proportionate methods, indicate all monuments, distances, and directions used to establish. Indicate type of monument and sign post found or set.

01/29/2025 - I found and accepted a 2-1/2" dia. W.C.D. brass capped iron pipe at the corner location along with one existing bearing tree. The other three bearing trees are either dead or are cut down. I set a new nail in the existing bearing tree, made three new bearing trees and used two found two iron pipes to witness the corner as shown below.

(c)(d)(e) Plan view of corner with ties to at least four witnesses. If in disagreement with previously established corner, show the distances between the two corners and also indicate the tie to the disputed corner.

Bearings given to the nearest second are Oneida County Grid. All other bearings are magnetic



- Vinyl "T" post 0.4' northwest corner.
- Distances to bearing trees are to nail in side.
- Sketch is not to scale



Certification

I, Gregory S. Maines, Professional Land Surveyor No. 2729, hereby certify that the corner location on this record was referenced by me or under my direction and control and that this U.S. Public Land Survey Monument Record is complete to the best of my knowledge and belief. REF: 2025016

Index No.: