

# U.S. PUBLIC LAND SURVEY MONUMENT RECORD

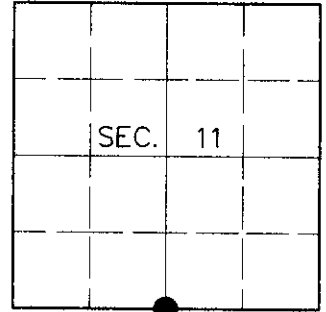
Note: This form is intended and designed to fulfill all requirements of Wisconsin Administrative Code, Chapter A-E 7.08, U.S. Public Land Survey Monument Record (3)(a)(b)(c)(d)(e)(f)(g)(h)(i). An additional sheet may be added if necessary to conform with said requirements.

**(a) CORNER LOCATION**

South ¼ Corner of Section 11  
 Township 39 North  
 Range 9 East  
 Town of Sugar Camp

**State Plane Coordinates**

X  
 Y  
 Datum  
 County of Oneida



**(b) HISTORY OF ORIGINAL CORNER ESTABLISHMENT**

Original Surveyor: William E. Daugherty

Original Bearing Trees:

Date of Survey: Commenced Sept. 22, 1863  
 Completed Sept. 29, 1863

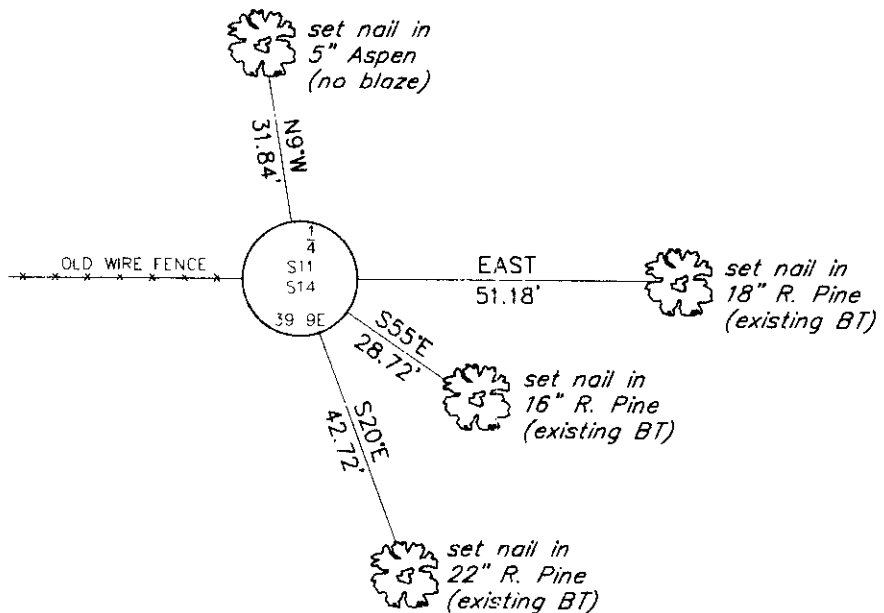
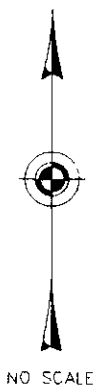
Fir 10 N58°W, 10 links  
 Maple 9 S63°E, 22 links

(b)(f)(g)(h) Description of monument found at this corner and if it was accepted, state all evidence (material, testimonial, occupational, plats, records, other monuments) used as a basis for accepting. If not accepted or if nothing was found, state evidence used as basis for establishing location. If reestablished through lost corner proportionate methods, indicate all monuments, distances and directions used to establish. Indicate type of monument and sign post found or set.

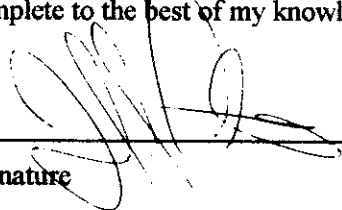
1972: OCS Map #L-618 by Robert Ilg, Registered Land Surveyor. Ilg indicates corner is marked by a DNR pipe with the following bearing trees: PN 15° N86°E, 0.764 ch.; PN 12° S59°E, 0.430 ch.; PN 18° S22°E, 0.635 ch.

June 30, 2000: I found and accepted a 2-½" dia iron pipe with 3" dia. DNR brass cap 24" above grade and marked as shown below. I established accessories as shown below and set a plastic sign post Northeast, 1 foot.

(c)(d)(e) Plan view of corner with ties to at least 4 witness monuments. If in disagreement with previously established corner, show the distances between the two corners and also indicate the ties to the disputed corner.



(i) I, Jeffrey W. Austin, Registered Land Surveyor S-1885, hereby certify that the corner location on this record was determined by me or under my direction and control and that this U.S. Public Land Survey Monument Record is correct and complete to the best of my knowledge and belief.

  
 Signature

7-23-00  
 Date



INDEX NO. J-19

3909110020