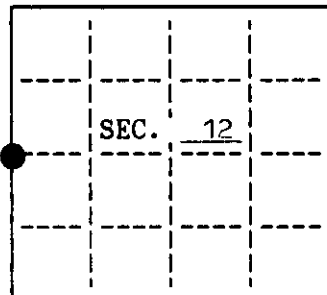


U.S. PUBLIC LAND SURVEY MONUMENT RECORD

Note: This form is intended and designed to fulfill all requirements of Wisconsin Administrative Code, Chapter A-E 7.08 U.S. Public Land Survey Monument Record (3)(a)(b)(c)(d)(e)(f)(g)(h)(i). An additional sheet may be added if necessary to conform with said requirements.

(a) CORNER LOCATION: State Plane Coordinates
West 1/4 corner of Sec. 12 X Not available
 Township 39 North Y Not available
 Range 9 East Datum Base _____
 Town/City Sugar Camp County of Oneida

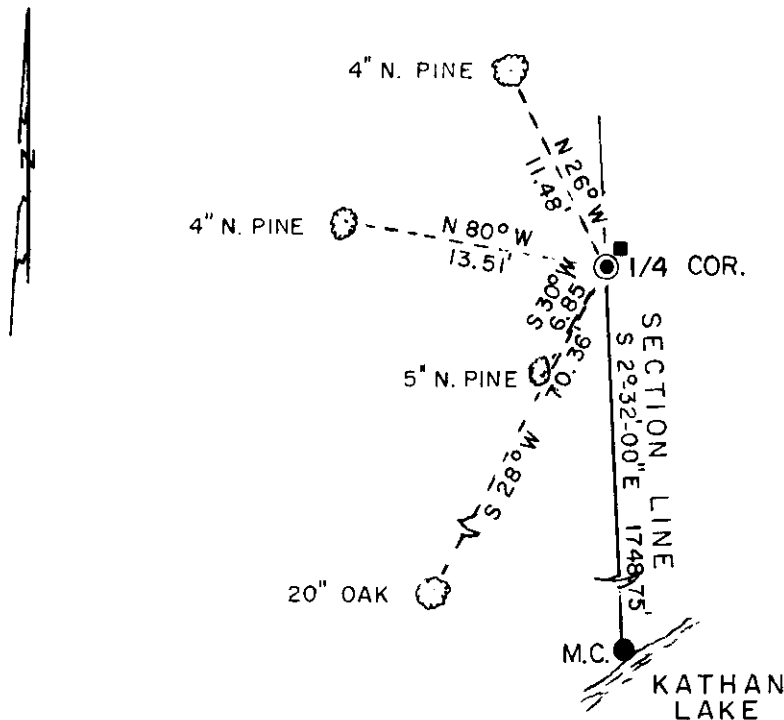


(b) HISTORY OF ORIGINAL CORNER ESTABLISHMENT
 Original Surveyor: William E. Daugherty Original B.T.'s
 Date of Survey: Commenced Sept. 22, 1863 12" Y. Pine S 19° W 27 lks.
 Completed Sept. 23, 1863 12" Y. Pine N 40° E 12 lks.

(b)(f)(g)(h) Description of monument found at this corner and if it was accepted, state all evidence (material, testimonial, occupational, plats, records, other monuments) used as a basis for accepting. If not accepted or if nothing was found, state evidence used as basis for establishing location. If reestablished through lost corner proportionate methods, indicate all monuments, distances and directions used to establish. Indicate type of monument and sign post found or set.

May 1909: Vaughn set corner & made B.T.'s: 16" N. Pine N 42° W 9 lks; 16" N. Pine S 62° E 32 lk
Dec. 1966: Robert Bandow found iron pipe & Vaughn's B.T.'s. Survey map #3719.
1972: Robert Ilg, WCD Surveyor, subdivided Sec. 11 & 12 and found Vaughn's corner to be in error & 6.771 chains southerly of the true 1/4 corner position. He set a WCD 2" iron pipe brass cap at the true position & made the following B.T.'s:
 14" Red Oak S 28° W 70.42'; 6" Red Maple S 80° W 42.57'; 8" Red Maple N 58° W 50.23'
April, 1974: Robert Bandow found WCD corner & B.T.'s and used this corner in Survey #5221.
Feb. 26, 1992: I, Michael E. Weber, found the WCD iron pipe brass cap & Ilg's B.T.'s. The two maples are both dead. Oak is now 20".
 20" Oak S 28° W 70.36' to a nail in the side
 Made the following new B.T.'s measured to a nail in the side of the tree:
 5" N. Pine S 30° W 6.85' 4" N. Pine N 26° W 11.48'
 4" N. Pine N 80° W 13.51' Set plastic sign post northeast of the corner.

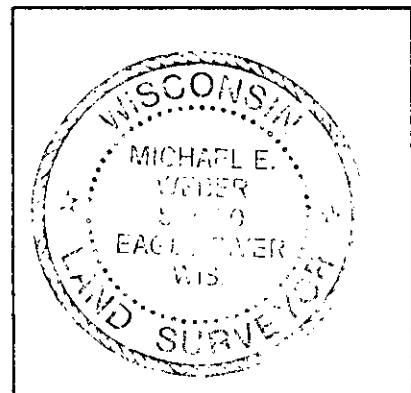
(c)(d)(e) Plan view of corner with ties to at least 4 witness monuments. If in disagreement with previously established corner, show the distances between the two corners and also indicate the ties to the disputed.



LEGEND

SCALE: 1" = 10'

- W.C.D. IRON PIPE BRASS CAP FOUND IN PLACE
- 1" IRON ROD FOUND IN PLACE
- BEARING TREE MEASURED TO A NAIL IN THE SIDE
- PLASTIC SIGN POST SET



(i) I, Michael E. Weber, R.L.S. #2070 hereby certify that the corner location on this record was determined by me or under my direction and control and that this U.S. Public Land Survey Monument Record is correct and complete to the best of my knowledge and belief.

Michael E. Weber
 Signature

3/3/92
 Date

INDEX NO. G-21

3909112000