

U.S. PUBLIC LAND SURVEY MONUMENT RECORD

Note: This form is intended and designed to fulfill all requirements of the Wisconsin Administrative Code, Chapter A-E 7.08 U.S. Public Land Monument Record (3)(a)(b)(c)(d)(e)(f)(g)(h)(i). An additional sheet may be added if necessary to conform with said requirements.

MAY 25 2017

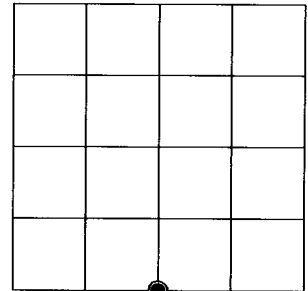
(a) CORNER LOCATION:
 South Quarter Corner of Section 12
 Township 39 North
 Range 9 East
 Town of Sugar Camp
 County of Oneida

WISCRS - Oneida County
 North: 250831.861 USft
 East: 289387.666 USft
 Latitude: 45° 52' 25.35828" N
 Longitude: 89° 18' 40.73016" W
 Datum: NAD 83(2011)
 GNSS Method: RTK - Direct
 GNSS Control: WISCORS VRS
 Record North: 250831.888 USft
 Record East: 289387.636 USft
 Record Datum: NAD 83(1991)

AT O'CLOCK
 KYLE J. FRANSON
 REGISTER OF DEEDS

(RECORDING AREA)

SECTION 12



(b) HISTORY OF ORIGINAL CORNER ESTABLISHMENT

Original Surveyor: Original survey places corner in lake.
 Date of Survey:

Original B.T.'S:

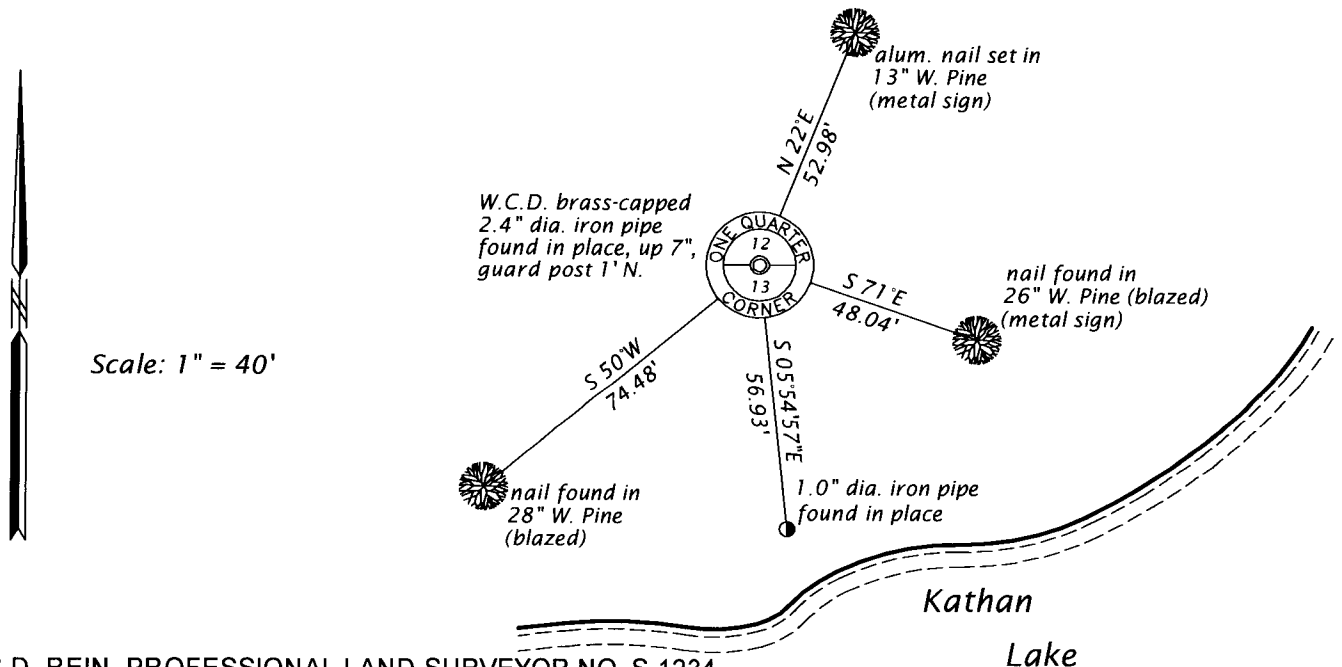
(f)(g)(h) DESCRIPTION OF MONUMENT FOUND AT THIS CORNER AND IF IT WAS ACCEPTED, STATE ALL EVIDENCE (MATERIAL, TESTIMONIAL, OCCUPATIONAL, PLATS, RECORD, OTHER MONUMENTS) USED AS A BASIS FOR ESTABLISHING LOCATION. IF NOT ACCEPTED OR IF NOTHING WAS FOUND, STATE EVIDENCE USED AS BASIS FOR ESTABLISHING LOCATION. IF REESTABLISHED THROUGH LOST CORNER PROPORTIONATE METHODS, INDICATE ALL MONUMENTS, DISTANCES AND DIRECTIONS USED TO ESTABLISH. INDICATE TYPE OF MONUMENT AND SIGN POST FOUND OR SET.

1970 to 1972 - ROBERT L. ILG, RLS No. 614. WCD and DNR, surveyor notes and maps filed in Trout Lake Office and record filed as L617 in the county surveyor's office show that an extensive survey was performed in Sections 1, 2, 10, 11, 12, 13, & 14, T39N, R9E, show that the corner common to Sections 11-12-13 & 14 was positioned in Kathan Lake by double proportionate measurement, and the 1/4 corner common to Sections 12 and 13 was positioned mid way and on line between the section corners. Records show he set a DNR pipe flush referenced by BT's: PW 12" S79°E, 1.324 ch.; PW 12" S71°E, 0.720 ch.; and a PW 18" S50°W, 1.111 ch..

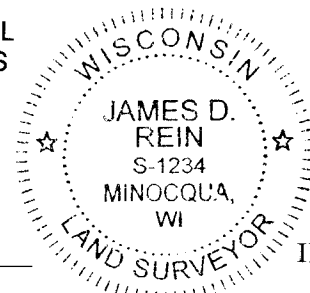
March 1, 2017 - James D. Rein, PLS No. 1234, we recovered the WCD brass capped 2.4" dia. iron pipe and made reference ties to preserve the position. I do not agree with this method of survey, which has the effect of placing a portion of land along the northerly shore of Kathan Lake formerly considered in Section 12, now in Section 13. It is my opinion the BLM Manual of Survey Instructions would consider Sections 12 and 13 Fractional and the 1/4 line should be located by mean bearing.

The coordinate value shown has been verified by at least one of the following methods: 1) comparison to a previously GPS determined published value; 2) the value is the average of two or more GPS observations at a markedly different time; 3) one or more distances were measured back to the GPS observed corner from temporary GPS observed offset locations.

(c)(d)(e) PLAN VIEW OF CORNER WITH TIES TO AT LEAST 4 WITNESS MONUMENTS. IF IN DISAGREEMENT WITH PREVIOUSLY ESTABLISHED CORNER, SHOW THE DISTANCE BETWEEN THE TWO CORNERS AND ALSO INDICATE THE TIES TO THE DISPUTED CORNER.



(i) I, JAMES D. REIN, PROFESSIONAL LAND SURVEYOR NO. S-1234 HEREBY CERTIFY THAT THE CORNER LOCATION ON THIS RECORD WAS DETERMINED BY ME OR UNDER MY DIRECTION AND CONTROL AND THAT THIS U.S. PUBLIC LAND SURVEY MONUMENT RECORD IS CORRECT AND COMPLETE TO THE BEST OF MY KNOWLEDGE AND



[Handwritten Signature]
 SIGNATURE

5-12-17
 DATE

INDEX NO. J-23
 3909120020