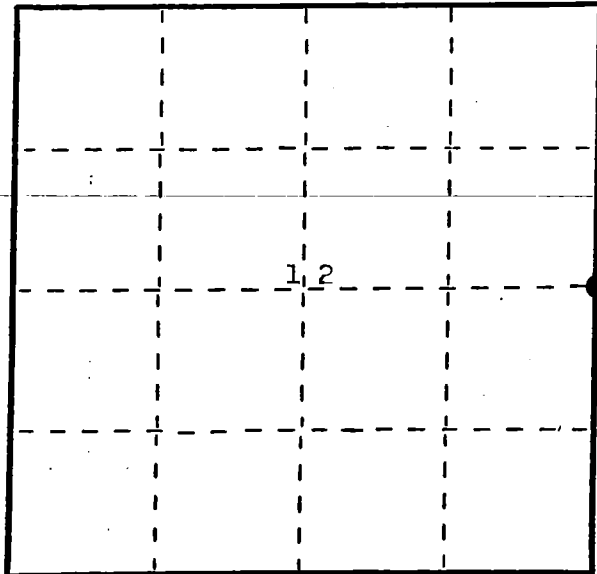


State of Wisconsin }  
County of Oneida } ss.

I, Thomas A. Boettcher, do hereby certify that on the 31st day of January, 1987, I found evidence of the East 1/4 corner of Section 12 Township 39 North, Range 9 East, Fourth Principal Meridian, as described hereon; and that from this evidence I established a new monument and accessories as described hereon to perpetuate the original location of this corner.

Resident witnesses:

Eric Zyhowski



● = Corner monument restored.

## U.S. Public Land Survey Monument Record

Index No. 6-25

### History of original corner establishment:

Original corner was established in the course of the survey of the exterior of T 39 N, R 9 E of which the East line was done on July 24, 1859 by H.C. Fellows, Deputy Surveyor.

Original B.T.'S  
12" Birch S 23° E 16 Lks.  
16" Birch N 88° W 26 Lks.

### Description of corner evidence found:

Found 6" x 6" concrete monument flush with the ground previously used and accepted as the 1/4 corner in previous Genisot & Associates, Inc. survey #5332 dated 6/6/75.

Found the following bearing trees measured to a nail in the side.  
14" N. Pine S 20° E 32.35 feet  
12" N. Pine N 63° W 29.78 feet

### Description of monument and accessories I established to perpetuate the original location of this corner.

Set 2 1/2" x 30" Vilas County aluminum magnetic capped monument stamped to identify the corner in place of the concrete monument. Left said concrete monument lying next to the corner.

Set 4" x 4" Cedar sign post 1.0 feet Northeast of the corner.

Blazed and scribed the following new bearing trees measured to nail in the side:  
7" Spruce N 34° E 24.57 feet  
12" W. Pine S 44° W 117.94 feet

Dated at Eagle River, Wis., this 4th day of February, 1987.

Signature: *Thomas A. Boettcher* Title: Registered Land Surveyor Registration No. 1763  
(County Surveyor, Registered Land Surveyor, or other duly authorized official)

Office of Register of Deeds, County of \_\_\_\_\_, I hereby certify that the within instrument was filed in this office for record on the \_\_\_\_\_ day of \_\_\_\_\_, 19\_\_\_\_ at \_\_\_\_\_ o'clock \_\_\_\_\_ M.

(Register of Deeds)

By \_\_\_\_\_ Deputy

3909122000

Describe any material discrepancy between the location of the corner as restored or reestablished and the location of that corner as previously restored or reestablished by distance and direction. Show the discrepancy on the plan view drawing under (d), above. Show the distances between the corner as previously restored or reestablished and (1) the corner as restored or reestablished, and (2) to at least 2 of the witness monuments shown on the drawing in (d), above.

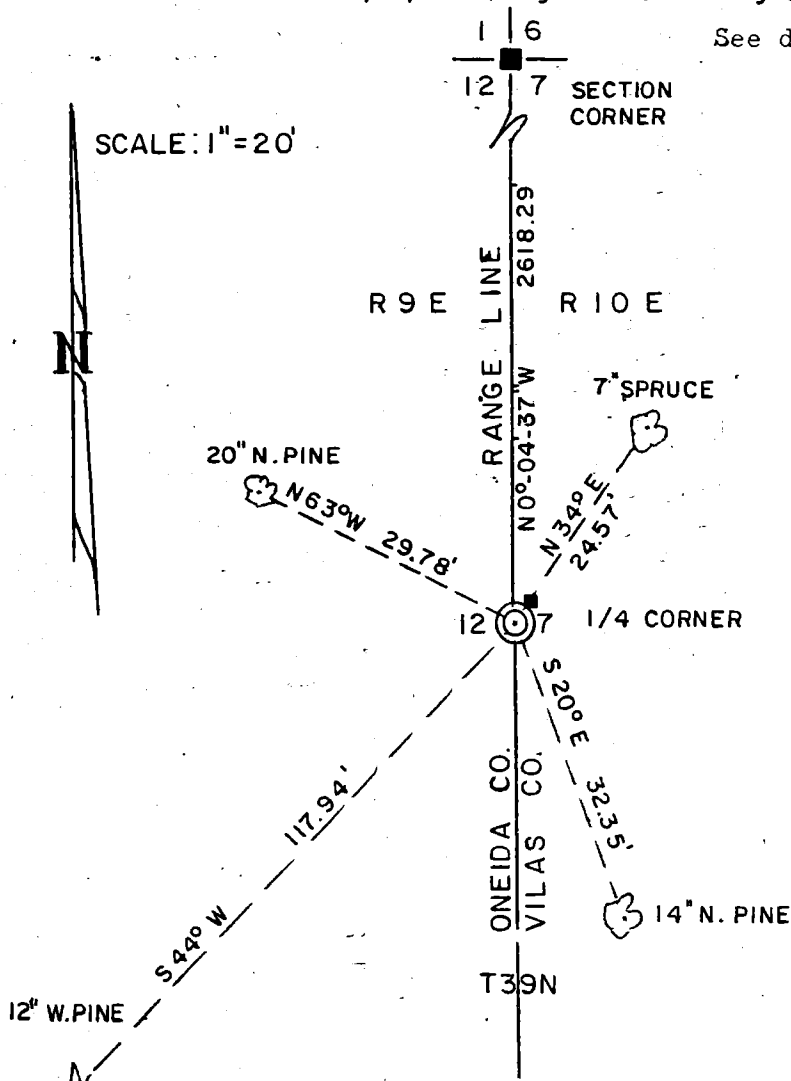
See drawing below.

Was the corner restored through acceptance of (1) an obliterated evidence location, or, (2) a found perpetuated location?

We accepted a found perpetuated location used in previous surveys.

Was the corner reestablished through lost corner proportionate methods? If so, show the method, including the directions and distances to other public land survey corners used as evidence or used for proportioning in determining the corner location?

See drawing below.



LEGEND

- ⊙ VILAS COUNTY ALUMINUM MONUMENT
- 6" X 6" CONCRETE MONUMENT
- 🌳 BEARING TREE MEASURED TO NAIL IN SIDE
- 4" X 4" CEDAR SIGN POST

REGISTER OF DEEDS OFFICE  
ONEIDA COUNTY, WIS.  
**FILED**  
FEB 27 1987  
At 8:00 O'clock a.m.  
DORIS VERAGE KUEHN  
REGISTER OF DEEDS

Affix Land Surveyor Seal

**WISCONSIN**

THOMAS A. BOETTCHER  
S-1763  
EAGLE RIVER  
WIS.

**LAND SURVEYOR**

Thomas A. Boettcher, R.L.S.#1763  
(Type or print name) certify that the corner location shown on this record was determined by me or under my direction and control and that this U.S. Public Land Survey Monument Record is correct and complete to the best of my knowledge and belief.

Thomas A. Boettcher Signature      FEB 4, 1987 Date