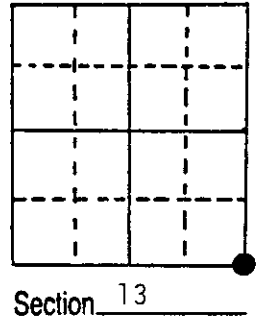


U.S. PUBLIC LAND SURVEY MONUMENT RECORD

Note: This form is intended and designed to fulfill all requirements of Wisconsin Administrative Code, Chapter A-E 5.02, U.S. Public Land Survey Monument Record (3) (a) (b) (c) (d) (e) (f) (g) (h) (i). An additional sheet may be added if necessary to conform with said requirements.

(a) Corner location: Township 39 North
 Range 9 East/West

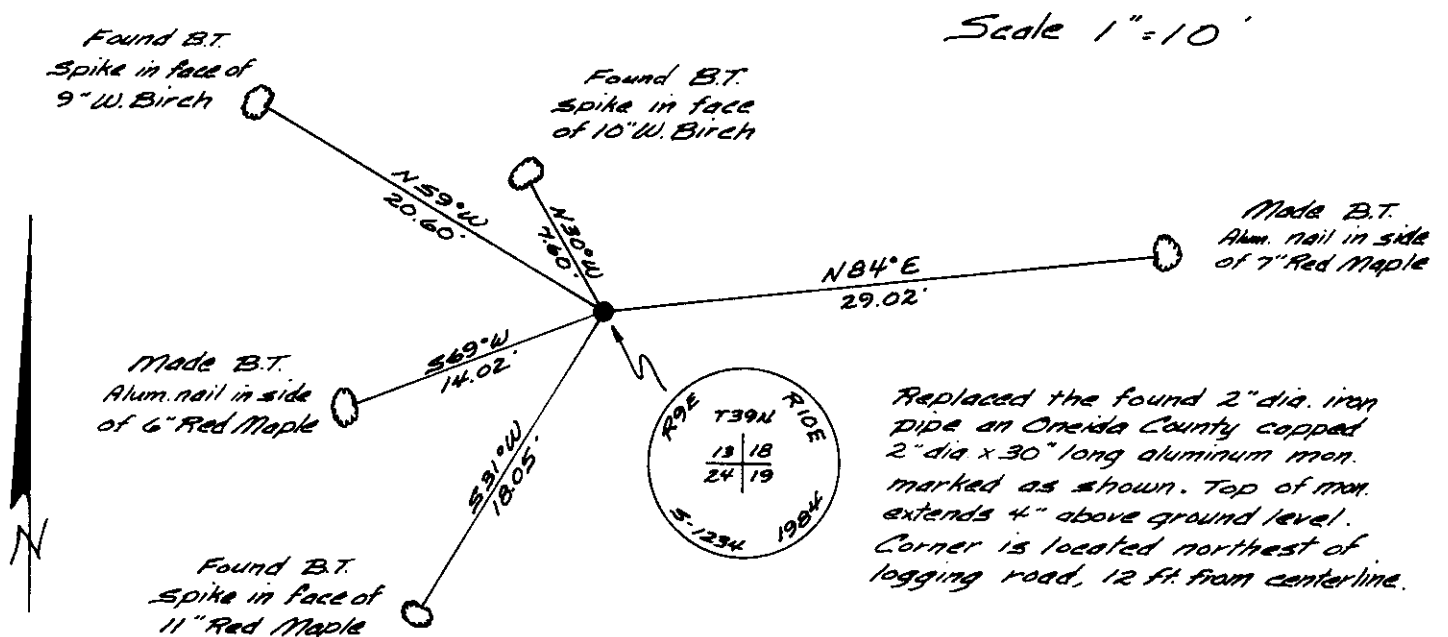
Town/City/Village Sugar Camp
 County Oneida



(b) (f) (g) (h) Description of monument found at this corner and if it was accepted, state all evidence (material, testimonial, occupational, plats, records, other monuments) used as a basis for accepting. If not accepted or if nothing was found, state evidence used as basis for establishing location. If reestablished through lost corner proportionate methods, indicate all monuments, distances and directions used to establish.

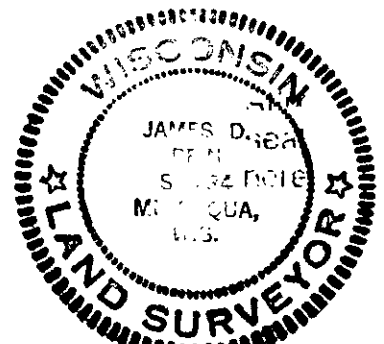
- July 24th, 1859 - H. C. Fellows, Deputy Surveyor: Set post, original bearing trees
 Birch 12" S54°W, 31 links; Birch 12" N46°W, 13 links;
 White Pine 10" N52°E, 20 links; Birch 12" S24°E, 28 links.
- Nov. 2nd, 1939- C. W. Fisher (Surveyor's Notes) "Found Original B.T. White Pine stub with original scribes - N31°E, 12.6 feet
- March 17th, 1975- Gerald B. Inman, Reg. Land Surveyor - Plat of Watersprite Woodlots identifies the corner as being monumented with a "2" iron pipe found."
- Oct. 17th, 1984- James D. Rein, Reg. Land Surveyor: Found a 2" diameter iron pipe and old 4" sq. Cedar Post marked "S24 R9E, S19 R10, S13, S18" Existing B.Ts
 9" W. Birch N59°W 20.60 ft.; 11" Red Maple S31°W, 18.05 ft.;
 10" White Birch N30°W, 7.60 feet.

(c) (d) (e) Plan view of corner with ties to at least 4 witness monuments. If in disagreement with previously established corner, show the distances between the two corners and also indicate the ties to the disputed corner.



(i) I, JAMES D. REIN, Reg. Land Surveyor #S-1234
 (type or print name) certify that the corner location on this record was determined by me or under my direction and control and that this U.S. Public Land Survey Monument Record is correct and complete to the best of my knowledge and belief.

James D. Rein 10/22/84
 Signature Date



Index No. N-25

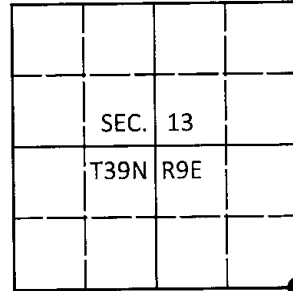
3909130000

U.S. PUBLIC LAND SURVEY MONUMENT RECORD

Note: This form is intended and designed to fulfill all requirements of Wisconsin Administrative Code, Chapter A-E 7.08 U.S. Public Land Survey Monument Record (3)(a-1).

(a) CORNER LOCATION
Cor. of Secs. 13, 18, 19 & 24
Township 39 North
Range 9 & 10 East of the 4th P.M.
Town of Sugar Camp
County of Oneida

WISCRS - Oneida County
N: 246,091.85 USft
E: 292,042.41 USft
Datum: NAD 83(2011)
GNSS Method: RTN Offset
GNSS Control: WISCORS VRS



(b) HISTORY OF ORIGINAL CORNER ESTABLISHMENT

Original Surveyor: _____ Original Accessories: _____

Date of Survey _____ Commenced: _____
Completed: _____

(b)(f)(g)(h) Description of monument found at this corner and if it was accepted, state all evidence (material, testimonial, occupational, plats, records, other monuments) used as a basis for accepting. If not accepted or if nothing was found, state evidence used as basis for establishing location. If re-established through lost corner proportionate methods, indicate all monuments, distances and directions used to establish. Indicate type of monument and sign post found or set.

This is a perpetuation of a previous USPLS Monument Record by James D. Rein, RLS dated October 22, 1984 and filed in the office of the Oneida County Register of Deeds. A complete history of the corner can be found on the previous monument record. I accept the previous location as a true and faithful perpetuation or reestablishment of the original corner location and further perpetuate it as follows.

September 29, 2016: I found and accepted the record monument, a 2-1/2" diam. aluminum pipe with a 3-1/4" diam. Oneida Co. aluminum cap projecting 2" above the ground surface. The existing accessories were found in substantial agreement with the record and were not remeasured as the sole purpose of this work is to report the coordinates of the corner point. The birch at N30°W was not recovered.

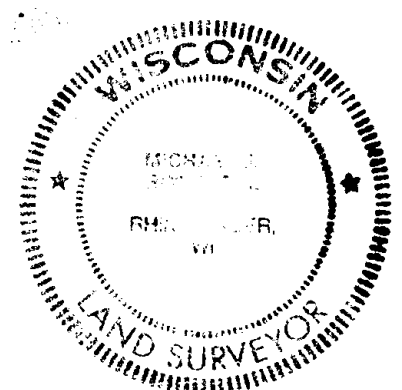
The coordinate value shown has been verified by at least one of the following methods: 1) comparison to a previously GPS determined published value; 2) the value is the average of two or more GPS observations at a markedly different time; 3) one or more distances were measured back to the GPS observed corner from temporary GPS observed offset locations.

(c)(d)(e) Plan view of corner with ties to at least 4 witness monuments. If in disagreement with previously established corner, show the distances between the two corners and also indicate the ties to the disputed.

REGISTER OF DEEDS OFFICE
ONEIDA COUNTY
FILED

DEC 28 2016

AT _____ O'CLOCK _____ M
KYLE J. FRANSON
REGISTER OF DEEDS



(i) I, Michael J. Romportl, Professional Land Surveyor No. S-1624, hereby certify that the corner location on this record was determined by me or under my direction and control and that this U.S. Public Land Survey Monument Record is correct and complete to the best of my knowledge and belief.

Michael J. Romportl 12/23/2016
Signature Date