

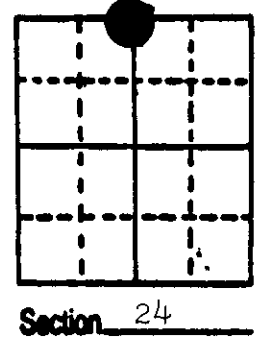
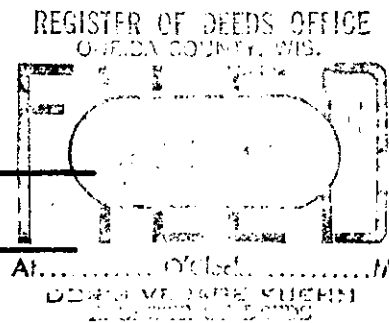
U.S. PUBLIC LAND SURVEY MONUMENT RECORD

Note: This form is intended and designed to fulfill all requirements of Wisconsin Administrative Code, Chapter A-E 5.02, U.S. Public Land Survey Monument Record (3) (a) (b) (c) (d) (e) (f) (g) (h) (i). An additional sheet may be added if necessary to conform with said requirements.

(a) Corner location: Township 39 North
 Range 9 East/West

Town/City/Village Sugar Camp

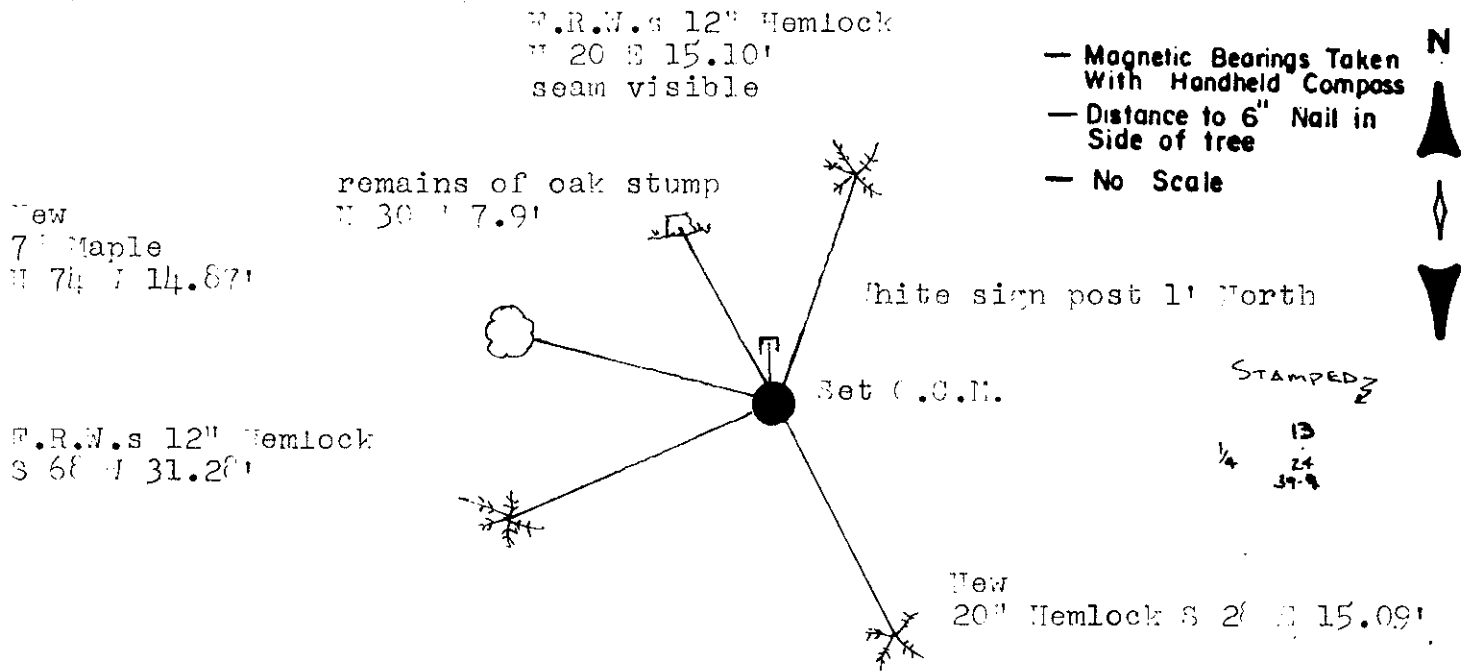
County Oneida



(b) (f) (g) (h) Description of monument found at this corner and if it was accepted, state all evidence (material, testimonial, occupational, plats, records, other monuments) used as a basis for accepting. If not accepted or if nothing was found, state evidence used as basis for establishing location. If reestablished through lost corner proportionate methods, indicate all monuments, distances and directions used to establish.

- 1863 W.E. Daughterty established original corner at 40.00 ch. B.T.s R. Oak 12 N 29 W 12; Hemlock 10 S 35 E 14.
- 1894 B.F. Dorr recovered corner.
- 1952 F.R. Wincentzen found old post and original oak B.T. stump B.T.s Hemlock 7 N 20 E 22.2 lks; Hemlock 12 S 57 W 47.3 lks.
- 1987 I found an iron pipe marking the corner and F.R.W.s B.T.s and the remains of the original oak B.T. I set an Oneida County split base capped monument over the iron pipe and witnessed the corner as shown below.

(c) (d) (e) Plan view of corner with ties to at least 4 witness monuments. If in disagreement with previously established corner, show the distances between the two corners and also indicate the ties to the disputed corner.



(i) Michael J. Romportl
 (type or print name) certify that the corner location on this record was determined by me or under my direction and control and that this U.S. Public Land Survey Monument Record is correct and complete to the best of my knowledge and belief.

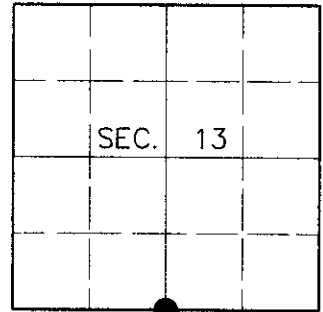
Michael J. Romportl December 2, 1987
 Signature Date
 GENISOT & ASSOCIATES INC.
 1512 EAGLE ST., RHINELANDER, WIS.

U.S. PUBLIC LAND SURVEY MONUMENT RECORD

Note: This form is intended and designed to fulfill all requirements of Wisconsin Administrative Code, Chapter A-E 7.08, U.S. Public Land Survey Monument Record (3)(a)(b)(c)(d)(e)(f)(g)(h)(i). An additional sheet may be added if necessary to conform with said requirements.

(a) CORNER LOCATION
 South ¼ Corner of Section 13
 Township 39 North
 Range 9 East
 Town of Sugar Camp

State Plane Coordinates
 X
 Y
 Datum
 County of Oneida



(b) HISTORY OF ORIGINAL CORNER ESTABLISHMENT

Original Surveyor: William E. Daugherty

Original Bearing Trees:

Date of Survey: Commenced Sept. 22, 1863
 Completed Sept. 29, 1863

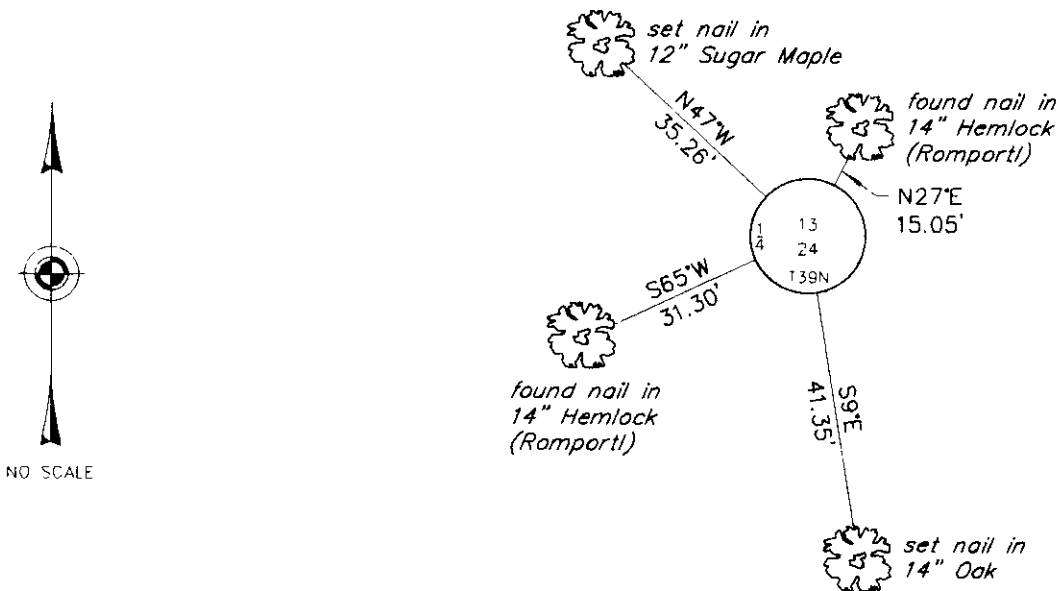
Red Oak 12 N29°W, 12 links
 Hemlock 10 S35°E, 14 links

(b)(f)(g)(h) Description of monument found at this corner and if it was accepted, state all evidence (material, testimonial, occupational, plats, records, other monuments) used as a basis for accepting. If not accepted or if nothing was found, state evidence used as basis for establishing location. If reestablished through lost corner proportionate methods, indicate all monuments, distances and directions used to establish. Indicate type of monument and sign post found or set.

December 2, 1987: U.S. Public Land Survey Monument Record by Michael J. Romportl, Registered Land Surveyor. Romportl set an Oneida County capped monument with the following bearing trees: Hemlock 12° N20°E, 15.10 feet; Hemlock 20° S28°E, 15.09 feet; Hemlock 12° S68°W, 31.28 feet; Maple 7° N74°W, 14.87 feet.

July 1, 2000: I found and accepted a 2-½" dia. aluminum pipe with 3-¼" dia. Oneida County aluminum cap 4" above grade and marked as shown below. I found Romportl's Hemlock stump 24" S27°E, 14.6 feet and his Maple stump 8" N78°W, 14.7 feet. I established accessories as shown below and found a plastic sign post North, 1 foot.

(c)(d)(e) Plan view of corner with ties to at least 4 witness monuments. If in disagreement with previously established corner, show the distances between the two corners and also indicate the ties to the disputed corner.



(i) I, Jeffrey W. Austin, Registered Land Surveyor S-1885, hereby certify that the corner location on this record was determined by me or under my direction and control and that this U.S. Public Land Survey Monument Record is correct and complete to the best of my knowledge and belief.

[Handwritten Signature]

7 27 00

Signature

Date



INDEX NO. N-23

3909130020