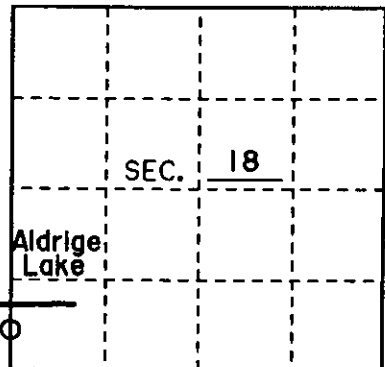


U.S. PUBLIC LAND SURVEY MONUMENT RECORD

Note: This form is intended and designed to fulfill all requirements of Wisconsin Administrative Code, Chapter A-E 7.08 U.S. Public Land Monument Record (3)(a)(b)(c)(d)(e)(f)(g)(h)(i). An additional sheet may be added if necessary to conform with said requirements.

(a) CORNER LOCATION: West Line County or State Plane Coordinates
Meander Corner of Section 18 Northing _____
 Township 39 North Easting _____
 Range 10 East Datum Base _____
 Township/City _____ County of _____

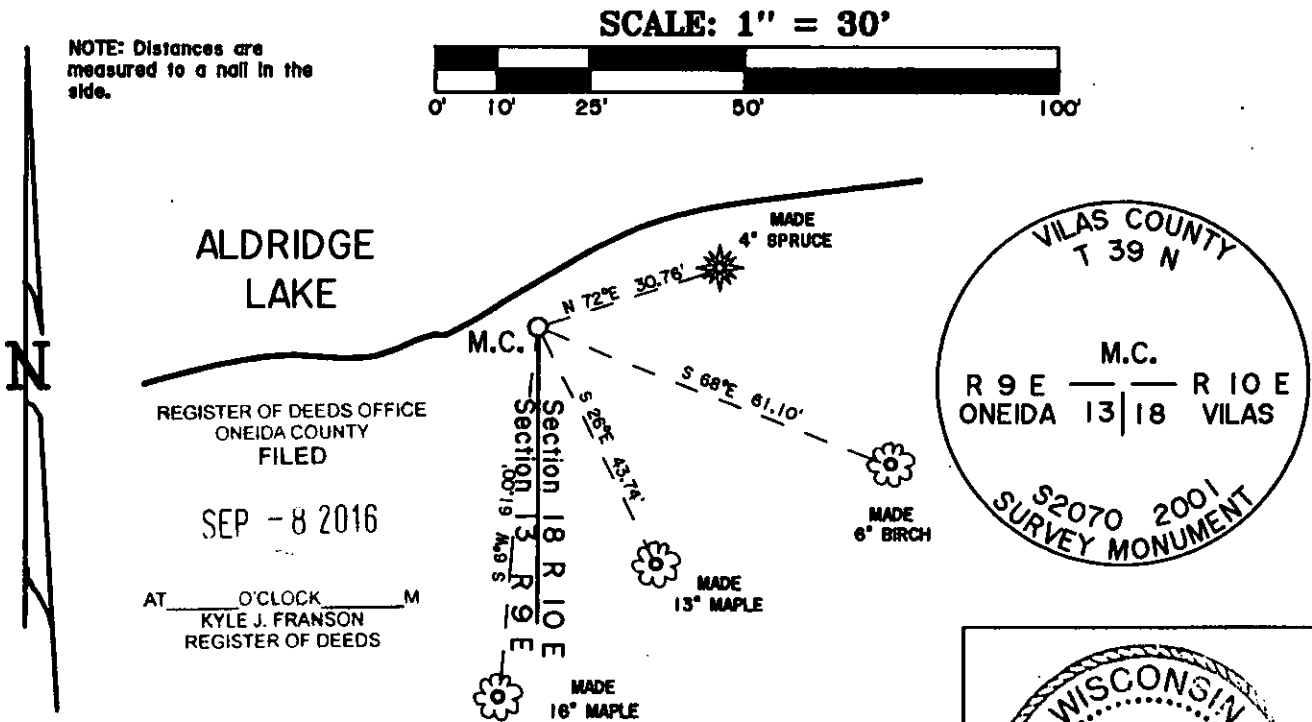


(b) HISTORY OF ORIGINAL CORNER ESTABLISHMENT Original B.T.'s
 Original Surveyor: William E. Daugherty Tamarack 12° S 37° E 79lks
 Date of Survey: 1863 Tamarack 10° S 16° W 127lks

(b)(f)(g)(h) Description of monument found at this corner and if it was accepted, state all evidence (material, testimonial, occupational, plats, records, other monuments) used as a basis for accepting. If not accepted or if nothing was found, state evidence used as basis for establishing location. If reestablished through lost corner proportionate methods, indicate all monuments, distances and directions used to establish. Indicate type of monument and sign post found or set.

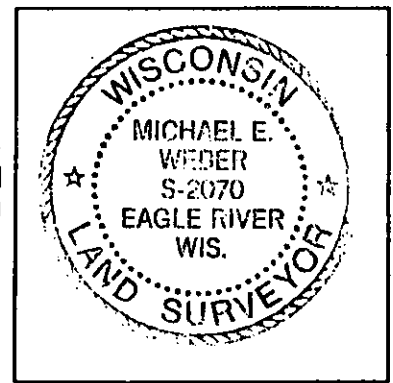
- 1863 William E. Daugherty set a wood post as the meander corner between Sections 13 & 18.
- 8-5-58 Robert E. Bandow set a iron pipe as the meander corner.
- 9-5-73 Gerald B. Inman found a 2" iron pipe in place.
- 5-28-80 James D. Rein found a 1 1/4" iron pipe in place.
- 5-9-91 James D. Rein found a 1 1/4" iron pipe in place.
- 7-4-01 I, Michael E. Weber found a 1 1/4" iron pipe and replaced it with a 2"x 36" Vilas County Aluminum Monument stamped to identify the corner as shown below. I also made four new bearing trees as shown below. I also found a plastic sign post 1' away.

(c)(d)(e) Plan view of the corner with ties to at least 4 witness monuments. If in disagreement with previously established corner, show the distances between the two corners and also indicate the ties to the disputed.



(i) I, Michael E. Weber R.L.S. No. H2070
 hereby certify that the corner location on this record was determined by me or under my direction and control and that this U.S. Public Land Survey Monument Record is correct and complete to the best of my knowledge and belief.

Signature Michael E. Weber Date 8/8/01



From Vilas Cty

3909130300

39-09 M,N-25
Index No. M,N-1