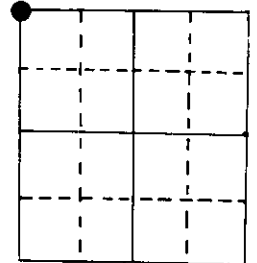


U.S. PUBLIC LAND SURVEY MONUMENT RECORD

Note: This form is intended and designed to fulfill all requirements of Wisconsin Administrative Code, Chapter A-E 5.02, U.S. Public Land Survey Monument Record (3) (a) (b) (c) (d) (e) (f) (g) (h) (i). An additional sheet may be added if necessary to conform with said requirements.

(a) Corner location: Township 39 North
 Range 9 East/West



Section 22

Town/City/Village Sugar Camp

County Oneida

(b) (f) (g) (h) Description of monument found at this corner and if it was accepted, state all evidence (material, testimonial, occupational, plats, records, other monuments) used as a basis for accepting. If not accepted or if nothing was found, state evidence used as basis for establishing location. If reestablished through lost corner proportionate methods, indicate all monuments, distances and directions used to establish.

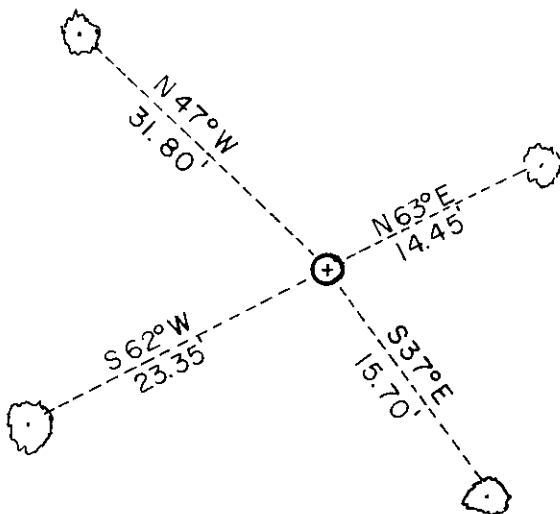
Orig. Post Set By Wm. E. Daugherty Sept. 24, 1863

BTs Birch 8 N18°E 51ks
 Birch 8 S27°W 151ks

Found 1" Iron Pipe

BTs Present MR 8" N47°W 31.80'
 MR 7" S37°E 15.70'
 Mkd. New MR 7" S62°W 23.35'
 BW 5" N63°E 14.45'

(c) (d) (e) Plan view of corner with ties to at least 4 witness monuments. If in disagreement with previously established corner, show the distances between the two corners and also indicate the ties to the disputed corner.



(i) I, Norbert L. Vissers
 (type or print name) certify that the corner location on this record was determined by me or under my direction and control and that this U.S. Public Land Survey Monument Record is correct and complete to the best of my knowledge and belief.

Affix seal here

Norbert L. Vissers March 27, 1985
 Signature Date

3909160000

N-13

MAR 24

KYLE J. FRANSON
REGISTER OF DEEDS

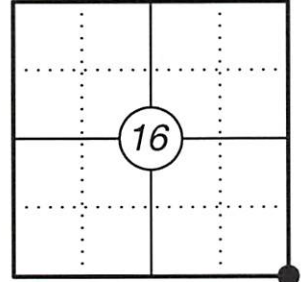
U.S. PUBLIC LAND SURVEY MONUMENT RECORD

This form is intended and designed to fulfill all requirements of Wisconsin Administrative Code, Chapter A-E 7.08 U.S. Public Land Survey Monument Record (3) (a)(b)(c)(d)(e)(f)(g)(h)(i). An additional sheet may be added if necessary to confirm with said requirements.

(a) Corner Location:

SE Corner Section 16
Township 39 North
Range 9 East
Town of Sugar Camp
County of Oneida

Corner ID: 3909160000



(b) History of Original Corner:

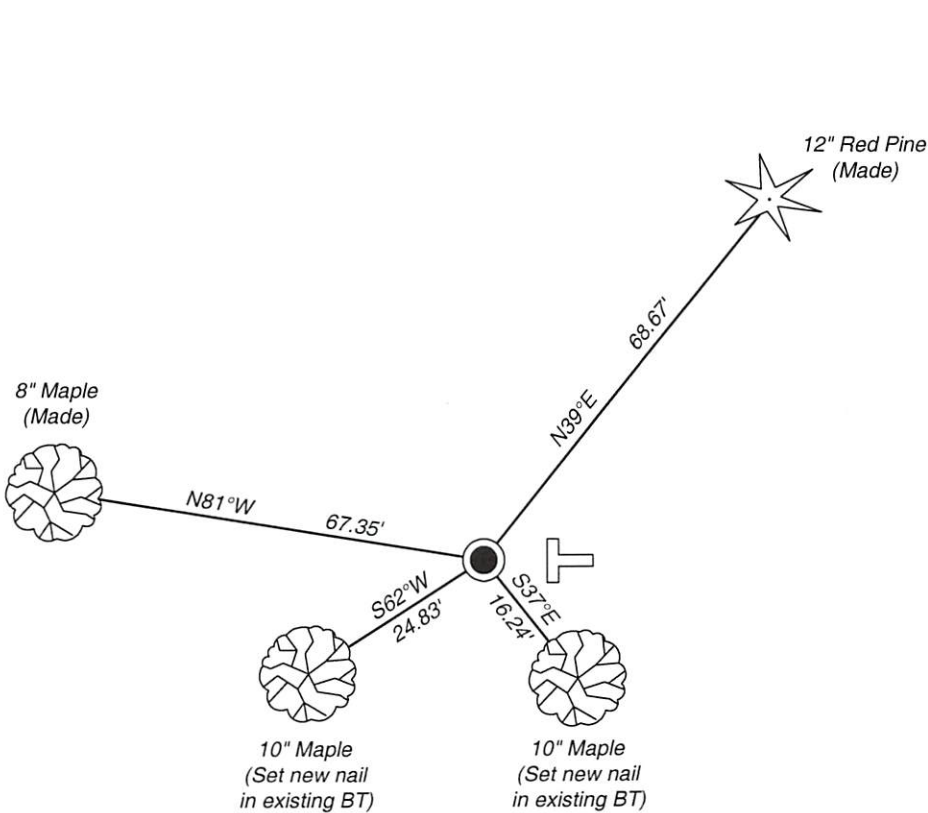
Original Surveyor: William Daugherty Original B.T.'s: 8" Birch - N 18° E, 5 Links
Date of Survey: September 24, 1863 8" Birch - S 27° W, 15 Links

(f)(g)(h) Description of monument found at this corner and if it was accepted, state all evidence (material, testimonial, occupational, plats, records, other monuments) used as a basis for establishing location. If reestablishing through lost corner proportionate methods, indicate all monuments, distances, and directions used to establish. Indicate type of monument and sign post found or set.

For corner history, see previous U.S. Public Land Survey Monument Record by Norbert L. Vissers, dated March 27, 1985.

07/25/2022 - I found a 2" dia. iron pipe with a brass cap 12" above grade at the corner location. I set new nails in two existing bearing trees and made two additional bearing trees to witness the corner as shown below.

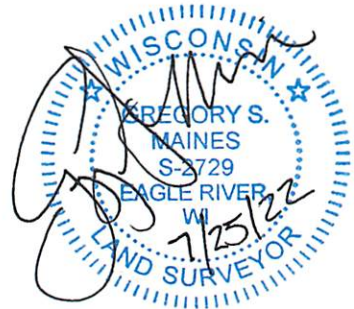
(c)(d)(e) Plan view of corner with ties to at least four witnesses. If in disagreement with previously established corner, show the distances between the two corners and also indicate the tie to the disputed corner.



Magnetic Bearings
Not to scale



- * Vinyl "T" post 1.0' east of corner.
- * Distances to bearing trees are to nail in side.



Certification

I, Gregory S. Maines, Professional Land Surveyor No. 2729, hereby certify that the corner location on this record was referenced by me or under my direction and control and that this U.S. Public Land Survey Monument Record is complete to the best of my knowledge and belief.
REF: 2022118