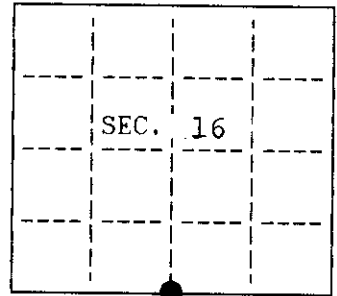


U. S. PUBLIC LAND SURVEY MONUMENT RECORD

Note: This form is intended and designed to fulfill all requirements of Wisconsin Administrative Code, Chapter A-E 1.02 U.S. Public Land Survey Monument Record. An additional sheet may be added if necessary to conform with said requirements.

(a) CORNER LOCATION: State Plane Coordinates
 South 1/4 corner of Sec. 16 X N/A
 Township 39 North Y N/A
 Range 9 East Datum Base
 Town/City Sugar Camp County of Oneida



(b) HISTORY OF ORIGINAL CORNER ESTABLISHMENT

Original Surveyor: William E Daugherty
 Date of Survey: Commenced Sept 22, 1863
 Completed Sept 29, 1863

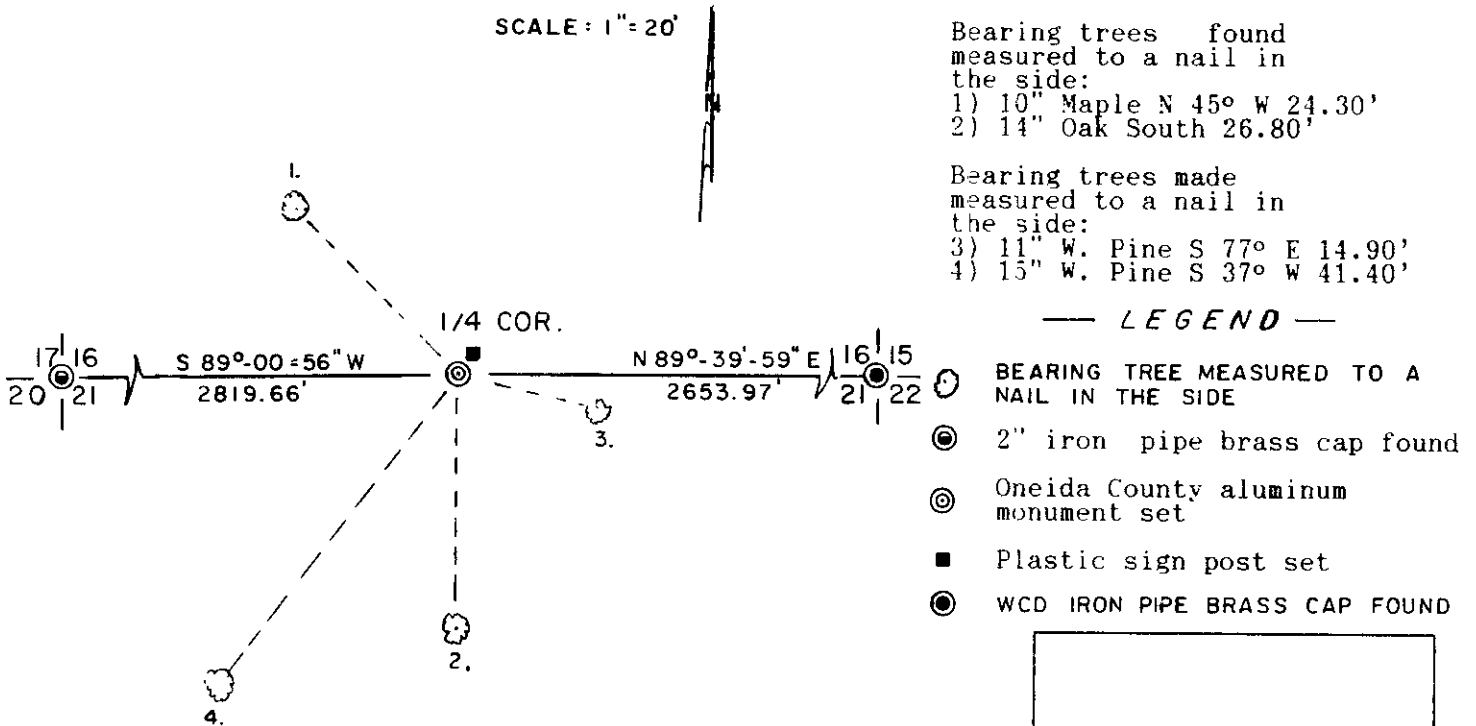
Original B.T.'s
 25" W. Pine N 78° W 20 lks
 10" Fir S 20° W 12 lks.

(b)(f)(g)(h) Description of monument found at this corner and if it was accepted, state all evidence (material, testimonial, occupational, plats, records, other monuments) used as a basis for accepting. If not accepted or if nothing was found, state evidence used as basis for establishing location. If reestablished through lost corner proportionate methods, indicate all monuments, distances and directions used to establish. Indicate type of monument and sign post found or set.

1902: Vaughn established corner and made the following bearing tree: 8" Birch N 70° W 54.3' and 6" Hemlock S 53° E 24.8'
 Sept. 1991: Marvin Seymour, DNR, found a 1" iron pipe with old blazes facing it. He also found mound of Northwest original bearing tree at distance and bearing. He found Vaughn's hemlock bearing tree tipped over and burnt at bearing and distance.

Nov. 8, 1994: I, James L. Will, found the 1" iron pipe found by Marvin Seymour. Found possible northwest original bearing tree pine stump N 78° W approximately 13 feet. Also old blazed line bearing north from the iron pipe. I accepted the 1" iron pipe and replaced the pipe with an Oneida County aluminum capped monument. I also found and made bearing trees as shown below. I set a plastic sign post 1 foot northwest of the corner.

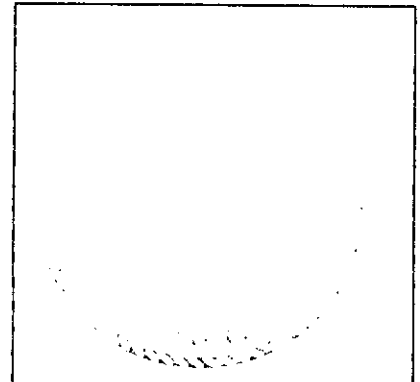
(c)(d)(e) Plan view of corner with ties to at least 4 witness monuments. If in disagreement with previously established corner, show the distances between the two corners and also indicate the ties to the disputed.



(i) I, James L. Will, R.L.S. #1410 hereby certify that the corner location on this record was determined by me or under my direction and control and that this U.S. Public Land Survey Monument Record is correct and complete to the best of my knowledge and belief.

James L. Will
 Signature

Dec. 12, 1994
 Date



N
 11

3909160020