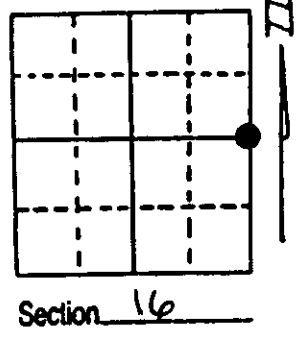


U.S. PUBLIC LAND SURVEY MONUMENT RECORD

Note: This form is intended and designed to fulfill all requirements of Wisconsin Administrative Code, Chapter A-E 7.08 U.S. Public Land Survey Monument Record (3) (a) (b) (c) (d) (e) (f) (g) (h) (i). An additional sheet may be added if necessary to conform with said requirements.

(a) Corner location: Township 39 North
 Range 9 East
 Town/City/Village SUGAR CAMP TOWNSHIP
 County ONEIDA

REGISTER OF DEEDS OFFICE
 ONEIDA COUNTY, WIS.
FILED
 JUN 17 1999
 At _____ O'Clock _____ M
THOMAS H. LEIGHTON
 REGISTER OF DEEDS

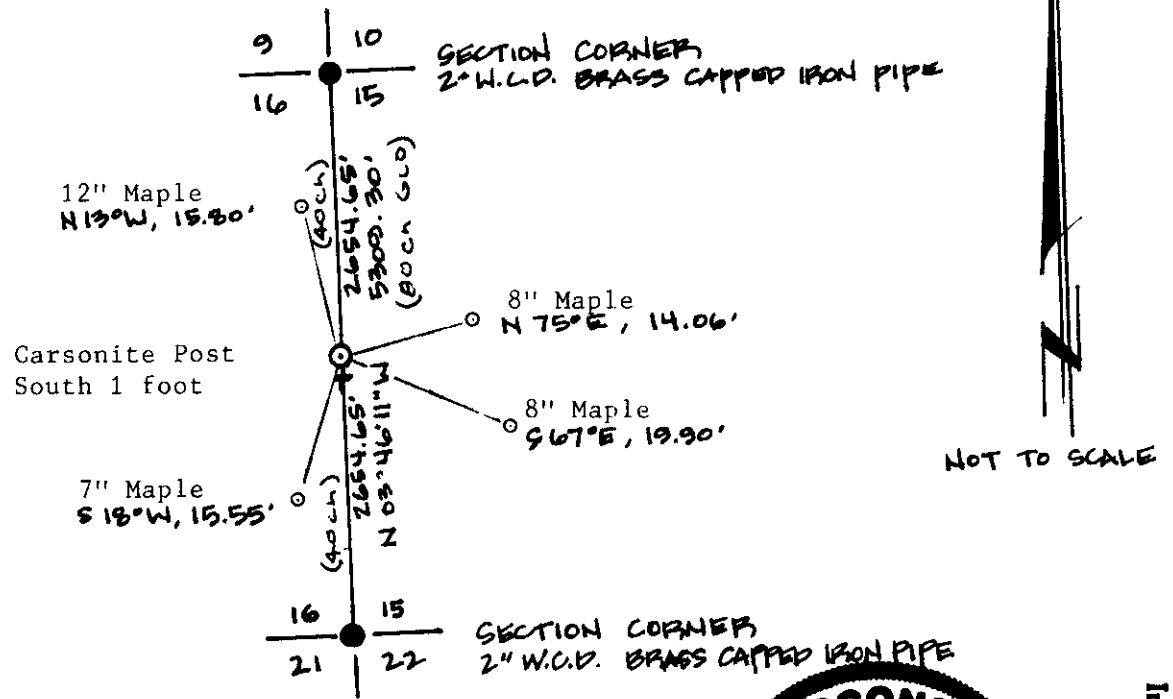


(b) (f) (g) (h) Description of monument found at this corner and if it was accepted, state all evidence (material, testimonial, occupational, plats, records, other monuments) used as a basis for accepting. If not accepted or if nothing was found, state evidence used as basis for establishing location. If reestablished through lost corner proportionate methods, indicate all monuments, distances and directions used to establish. Indicate type of monument found or set and sign post.

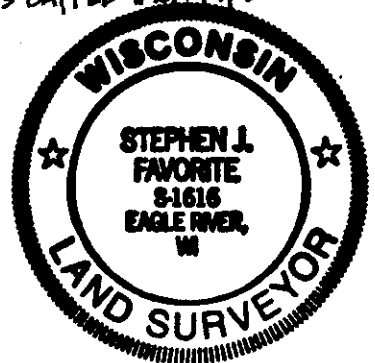
Sept. 1863 Original post set by William E. Daugherty.
 Original BT's - 10" Tamarac S 71 degrees E, 3 links
 10" Cedar N 85 degrees W, 17 links

Oct. 17, 1996 We searched for and did not find evidence of the original BT's or the post. We could not align the topo calls with the existing topography. The proportionate location falls on a hill west of the swamp. This did not correspond with the topo calls in the original notes. I believe the original surveyor was leaving a swamp when he stated he entered the swamp at 39 chains, furthermore I believe he re-entered the swamp when he stated he left the swamp at 54 chains. We set the corner by single proportionate method between opposing section corners as indicated below.

(c) (d) (e) Plan view of corner with ties to at least 4 witness monuments. If in disagreement with previously established corner, show the distances between the two corners and also indicate the ties to the disputed corner.



(i) I, Stephen J. Favorite, RLS #S-1616
 (type or print name) certify that the corner location on this record was determined by me or under my direction and control and that this U.S. Public Land Survey Monument Record is correct and complete to the best of my knowledge and belief.
Stephen J. Favorite
 Signature Date 6-10-99



3909 162000

Index No. L 13