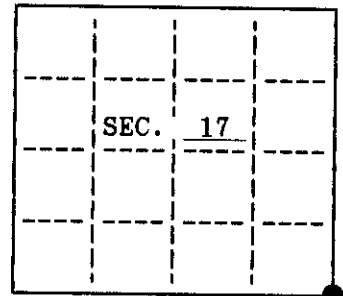


U.S. PUBLIC LAND SURVEY MONUMENT RECORD

Note: This form is intended and designed to fulfill all requirements of Wisconsin Administrative Code, Chapter A-E 7.08 U.S. Public Land Survey Monument Record (3)(a)(b)(c)(d)(e)(f)(g)(h)(i). An additional sheet may be added if necessary to conform with said requirements.

(a) CORNER LOCATION: State Plane Coordinates
 Southeast corner of Sec. 17 X N/A
 Township 39 North Y N/A
 Range 9 East Datum Base _____
 Town/City Sugar Camp County of Oneida



(b) HISTORY OF ORIGINAL CORNER ESTABLISHMENT
 Original Surveyor: William E Daugherty
 Date of Survey: Commenced Sept 22, 1863
 Completed Sept 29, 1863

Original B.T.'s
 10" Birch N 70° E 28 lks.
 12" Hemlock S 27° W 18 lks.
 12" W. Birch N W

(b)(f)(g)(h) Description of monument found at this corner and if it was accepted, state all evidence (material, testimonial, occupational, plats, records, other monuments) used as a basis for accepting. If not accepted or if nothing was found, state evidence used as basis for establishing location. If reestablished through lost corner proportionate methods, indicate all monuments, distances and directions used to establish. Indicate type of monument and sign post found or set.
Sept, 1946: A.J. Lytle set an iron pipe brass cap for the corner and made the following bearing trees: 12" W. Birch S 36° E 16 lks. & 15" B. Oak N 67° E 52 lks.
1946-1947: H.S. Tuttle subdivided Sec. 17 and accepted Lytle's corner.
June 20, 1949: F.R. Wintcentsen, Genisot Eng. Co. accepted and used Lytle's corner.
1950: Unsigned testimony by four local longtime residents call for Lytle's corner as the true section corner location.

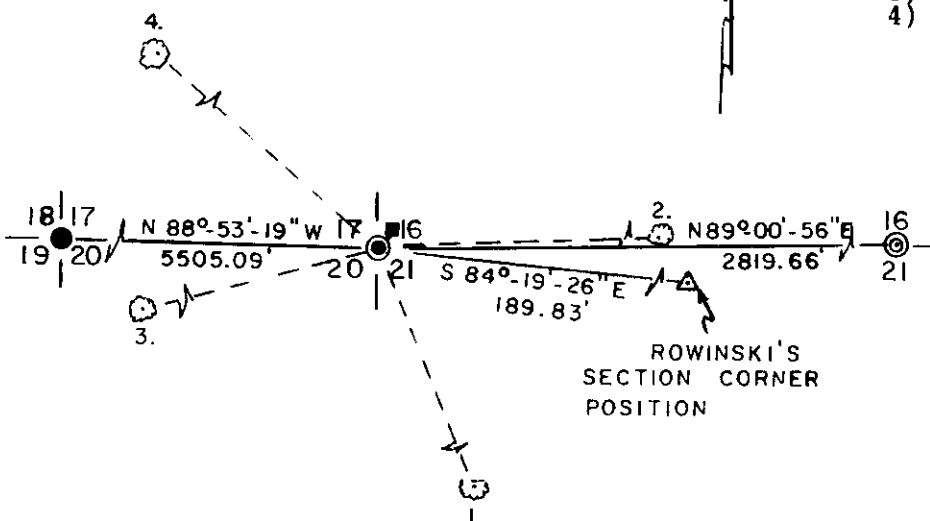
June 11, 1902: Vaughn claimed he found both original bearing trees and set post and made new bearing tree: 12" Birch stump N 46°-30' W 63 lks.
June 1949: N.M. Rowinski claims he found Vaughn's corner and bearing tree and evidence of original bearing tree. This position bears S 84°-19'-26" E 189.83' from Lytle's corner;
Sept. 1991: Marvin Seymour, DNR found Lytle's corner and post hole as probable Vaughn's corner.
Nov. 8, 1994: I, James L. Will, found Lytle's corner and Vaughn's position. I made new bearing trees measured to a nail in the side for Lytle's corner as shown below. I also set a plastic sign post 1 foot northeast of Lytle's corner.

(c)(d)(e) Plan view of corner with ties to at least 4 witness monuments. If in disagreement with previously established corner, show the distances between the two corners and also indicate the ties to the disputed.

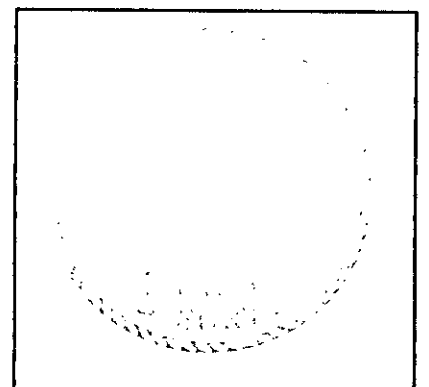
(NOT TO SCALE)

- Bearing trees made measured to a nail in the side:
- 1) 17" Oak S 22° E 42.83'
 - 2) 5" Oak N 88° E 21.56'
 - 3) 8" Oak S 75° W 47.79'
 - 4) 7" W. Pine N 49° W 80.71'

— LEGEND —



- 1" iron pipe found
- Bearing tree measured to a nail in the side
- ⊙ 2" iron pipe brass cap found
- ⊙ Oneida County aluminum monument set
- Plastic sign post set
- △ Computed position



(i) I, James L. Will, R.L.S. #1410 hereby certify that the corner location on this record was determined by me or under my direction and control and that this U.S. Public Land Survey Monument Record is correct and complete to the best of my knowledge and belief.

James L. Will
 Signature

Dec. 12, 1994
 Date

3909170000

U.S. PUBLIC LAND SURVEY MONUMENT RECORD

This form is intended and designed to fulfill all requirements of Wisconsin Administrative Code, Chapter A-E 7.08 U.S. Public Land Survey Monument Record (3) (a)(b)(c)(d)(e)(f)(g)(h)(i).

Oneida County
Land Information Office
Filed
8/20/2025

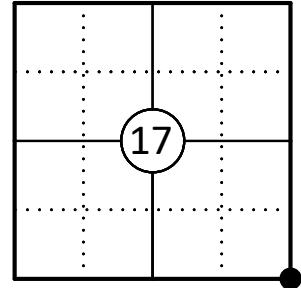
A-E 7.08(3)(a) Identity of the corner:

SE Corner Section 17
Township 39 North
Range 9 East
Town of Sugar Camp
County of Oneida

Original Corner Information:

Original Surveyor: William E. Daugherty Original B.T.'s: 10" Birch N70°E, 28 links
Date of Survey: September 1863 12" Hemlock S27°W, 18 links

Corner ID: 3909170000



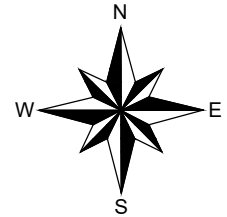
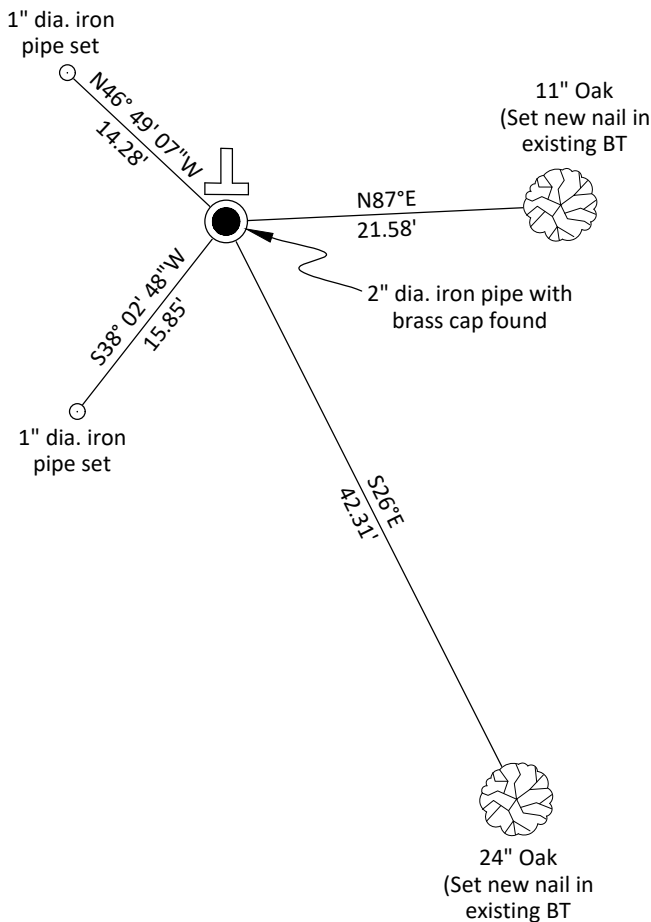
A-E 7.08(3)(b)(e)(f)(g) Describe any record evidence, monument evidence, occupational evidence, testimonial evidence or any other material evidence considered. Describe any discrepancy between the corner restored and any previously established location. State whether the corners was restored through acceptance of obliterated evidence, a found perpetuated location, or determined by proportionate methods.

See U.S. Public Land Survey Monument Record by James Will dated December 12, 1994 for previous history

08/04/2025 I found and accepted a 2" dia. iron pipe with a brass cap stamped to identify the corner along with two existing bearing trees. I set new nails in the existing bearing trees and set two reference monuments to witness the corner as shown below.

A-E 7.08(3)(c)(d)(e)(h) Plan view of corner with ties to at least four witnesses. If in disagreement with previously established corner, show the distances and directions to the two corners and also indicate the tie to the disputed corner. Distances and directions to other PLSS used as evidence or for proportioning.

Bearings given to the nearest second are Oneida County Grid
all other bearings are magnetic



- * Vinyl "T" post 0.5' north of corner.
- * Distances to bearing trees are to nail in side.
- * Sketch is not to scale



A-E 7.08(3)(i) - Certification

I, Gregory S. Maines, Professional Land Surveyor No. 2729, hereby certify that the corner location on this record was referenced by me or under my direction and control and that this U.S. Public Land Survey Monument Record is complete to the best of my knowledge and belief.
REF: 2025221

Index No.: